

PRICED

English & French Furniture

GEORGIAN SILVER • GOTHIC CARVED IVORIES
TAPESTRIES • RUGS • PAINTINGS • PRINTS

Property from the
Collection Formed by the Late
Mrs Charles B. Alexander

FROM HER NEW YORK RESIDENCE AT 4 WEST 58 STREET
SOLD BY ORDER OF THE HEIRS

With Property of
FRANK P. SHERIDAN, *Chicago*
SAUL E. ROGERS, *New York*
AND OTHER OWNERS



Public Sale
April 17, 18, and 19
at 2 p. m.

PARKE-BERNET GALLERIES • INC
30 EAST 57 STREET • NEW YORK
1941

SALE NUMBER 277
EXHIBITION FROM APRIL 12 TO TIME OF SALE
WEEKDAYS 9 TO 5:30 · SUNDAY 2 TO 5

ENGLISH & FRENCH FURNITURE

GEORGIAN SILVER · GOTHIC CARVED IVORIES
SPORTING PRINTS · PAINTINGS · ORIENTAL RUGS
AUBUSSON CARPET · TAPESTRIES · TABLEWARE
OBJECTS OF ART

Property from the
Collection Formed by the Late
MRS CHARLES B. ALEXANDER
From Her New York Residence at 4 West 58 Street

SOLD BY ORDER OF THE HEIRS

With Property of
FRANK P. SHERIDAN, *Chicago*
SAUL E. ROGERS, *New York*
MRS CHARLES H. THIERIOT, *New York*

OTHER OWNERS

Sold by Their Order



Public Sale
April 17, 18, and 19 at 2 p. m.

PARKE-BERNET GALLERIES · INC
30 EAST 57 STREET · NEW YORK · 1941

PRICED CATALOGUES

A priced copy of this catalogue may be
obtained for one dollar for each
session of the sale plus
the cost of the
catalogue

CONDITIONS OF SALE

The property listed in this catalogue will be offered and sold subject to the following terms and conditions:

1. The word "Galleries", wherever used in these Conditions of Sale, means the Parke-Bernet Galleries, Inc.
2. The Galleries has exercised reasonable care to catalogue and describe correctly the property to be sold, but it does not warrant the correctness of description, genuineness, authenticity or condition of said property.
3. Unless otherwise announced by the auctioneer at the time of sale, all bids are to be for a single article even though more than one article is included under a numbered item in the catalogue. If, however, the articles under any one numbered item are designated as a "Lot" then bids are to be for the lot irrespective of the number of articles described in such item.
4. The highest bidder accepted by the auctioneer shall be the buyer. In the event of any dispute between bidders, the auctioneer may, in his discretion, determine who is the successful bidder, and his decision shall be final; or the auctioneer may reoffer and resell the article in dispute.
5. Any bid which is not commensurate with the value of the article offered, or which is merely a nominal or fractional advance over the previous bid, may be rejected by the auctioneer, in his discretion, if in his judgment such bid would be likely to affect the sale injuriously.
6. The name and address of the buyer of each article, or lot, shall be given to the Galleries immediately following the sale thereof, and payment of the whole purchase price, or such part thereof as the Galleries may require, shall be immediately made by the purchaser thereof. If the foregoing condition, or any other applicable condition herein, is not complied with, the sale may, at the option of the Galleries, be canceled, and the article, or lot, reoffered for sale.
7. Unless the sale is advertised and announced as an unrestricted sale, or a sale without reserve, consignors reserve the right to bid.
8. Except as herein otherwise provided, title will pass to the highest bidder upon the fall of the auctioneer's hammer, and thereafter the property is at the purchaser's sole risk and responsibility.
9. Articles sold and not paid for in full and not taken by noon of the day following the sale may be turned over by the Galleries to a carrier to be delivered to a storehouse for the account and risk of the purchaser, and at his cost. If the purchase price has not been so paid in full, the Galleries may either cancel the sale, and any partial payment already made shall thereupon be forfeited as liquidated damages, or it may resell the same, without notice to the buyer and for his account and risk, and hold him responsible for any deficiency.

10. If for any cause whatsoever any article sold cannot be delivered, or cannot be delivered in as good condition as the same may have been at the time of sale, the sale will be canceled, and any amount that may have been paid on account of the sale will be returned to the purchaser.

11. In addition to the purchase price, the buyer will be required to pay the New York City sales tax, unless the buyer is exempt from the payment thereof.

12. The Galleries, subject to these Conditions of Sale and to such terms and conditions as it may prescribe, but without charge for its services, will undertake to make bids for responsible parties approved by it. Requests for such bidding must be given with such clearness as to leave no room for misunderstanding as to the amount to be bid and must state the catalogue number of the item and the name or title of the article to be bid on. If bids are to be made on several articles listed as one item in the catalogue, the request should state the amount to be bid on each article, unless the item contains the notation "Lot", in which case the request should state the amount to be bid "For the Lot". The Galleries reserves the right to decline to undertake to make such bids.

13. The Galleries will facilitate the employment of carriers and packers by purchasers but will not be responsible for the acts of such carriers or packers in any respect whatsoever.

14. These Conditions of Sale cannot be altered except in writing by the Galleries or by public announcement by the auctioneer at the time of sale.

SALES CONDUCTED BY

HIRAM H. PARKE • OTTO BERNET

HARRY E. RUSSELL, JR • LOUIS J. MARION

PARKE-BERNET GALLERIES • INC

30 EAST 57 STREET • NEW YORK


Telephone PLAZA 3-7573

Cable PARKGAL

HIRAM H. PARKE • *President*

OTTO BERNET • ARTHUR SWANN • LESLIE A. HYAM • *Vice-Presidents*

EDWARD W. KEYES • *Secretary and Treasurer*



Digitized by the Internet Archive
in 2023 with funding from
The Metropolitan Museum of Art

ORDER OF SALE

FIRST SESSION

THURSDAY AFTERNOON, APRIL SEVENTEENTH

Table Glass	1- 6
Table China	7- 15
Silver and Silver-Plated Ware	16- 35
Chinese and Japanese Objects	36- 47
Paintings	48- 82
Sculpture	83- 92
French and Italian Furniture and Decorations	94-229

SECOND SESSION

FRIDAY AFTERNOON, APRIL EIGHTEENTH

Antique Embroideries, Velvets and Brocades	230-254
Paintings	255-283
English and American Furniture and Decorations	284-366
Tapestries	367-376
Oriental Rugs	377-395
French and Italian Furniture and Decorations	396-440

THIRD AND LAST SESSION

SATURDAY AFTERNOON, APRIL NINETEENTH

Georgian Silver and Sheffield Plate	441-487
Etchings and Engravings	488-502
Sporting Prints	503-514
English and American Furniture and Decorations	515-578
Tapestries	579-587
Gothic Carved Ivories	588-608
French Furniture and Decorations	609-655
Oriental and Aubusson Rugs	656-678

FIRST SESSION

Thursday, April 17, 1941, at 2 p.m.

CATALOGUE NUMBERS 1 TO 229 INCLUSIVE

TABLE GLASS

1. PAIR RUBY AND CLEAR CUT GLASS DECANTERS

1250
Tall bottle cut with facets and lattice pattern. Together with a condiment bottle. [Lot.] (*Thieriot*) *Height 14½ inches*

2. TWO OLD GLASS DECANTERS

15-
Diamanté-cut glass cylindrical bottle; and a blown glass decanter paneled with cable moldings. (*Thieriot*) *Heights 11½ and 13½ inches*

3. THREE ETCHED GLASS CLARET JUGS

30-
Two finely etched with Greek chariot scenes; the third tinted rose, etched in reserve with hanging floral vines. [Lot.] (*Thieriot*) *Heights 13¼ to 14¼ inches*

4. CUT GLASS CENTREPIECE AND PAIR COVERED SWEETMEAT URNS

75-
English, XIX Century
Large scalloped tazza supporting a trumpet-shaped vase, and a pair of urns with steeple covers *en suite*; valanced edges cut with thumbspots. [Lot.] (*Rogers*) *Heights 15½ and 20½ inches*

5. VENETIAN FLORIATED GLASS TABLE GARNITURE

5-
Consisting of five tall candlesticks, five compotiers, and eight cordial glasses. Together with a water pitcher. Some pieces imperfect. [Lot.] (*Conner*)

6. VENETIAN IRIDESCENT GLASS TABLE GARNITURE

10-
Consisting of four dolphin-stem candlesticks, a dragon-handled bowl, and fifteen individual swan-shaped bonbon dishes; varying in color. Some pieces imperfect. [Lot.] (*Conner*)

TABLE CHINA

7. TWELVE ROYAL WORCESTER DECORATED PORCELAIN PLACE PLATES

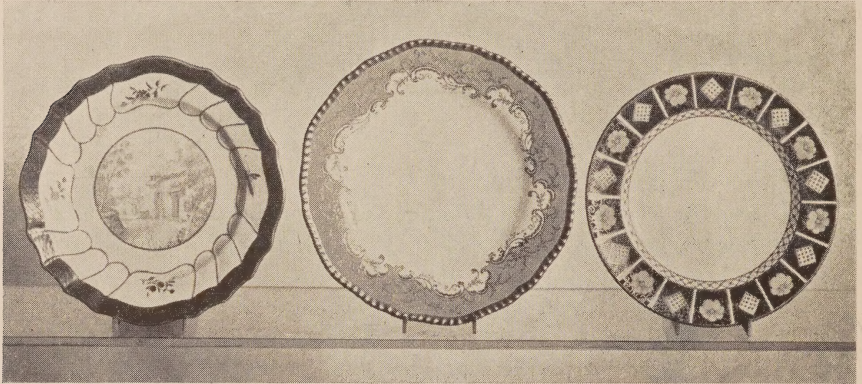
75-
Border decorated with a running vine of pink, yellow, and white roses. Fine quality. [Lot.] (*Conner*) *Diameter 10¾ inches*

8. TWELVE ROYAL DOULTON PORCELAIN PLATES PAINTED WITH
VIEWS IN THE SHAKESPEARE COUNTRY

Each plate painted with a different view; tooled gold edges. Signed J.
Hughes and titled on the back. Fine quality. [Lot.] (Conner)

Diameter $10\frac{1}{2}$ inches

90-



[9]

[10]

[11]

9. TWELVE OLD TOURNAY FINE HAND-PAINTED PORCELAIN
DESSERT PLATES

Cavetto beautifully painted *en camaïeu* in claret with a medallion of rural
scenery; spirally lobed border banded and molded in lapis blue.

Diameter $9\frac{3}{4}$ inches

[See illustration of one]

90-

10. EIGHTEEN COALPORT TURQUOISE BLUE AND GOLD PORCELAIN
SERVICE PLATES

Plain white cavetto with scrolled and gilded turquoise border ornamented
with gilded seaweed pattern; valanced and gadrooned gilded edge. (Rogers)

Diameter $10\frac{1}{4}$ inches

[See illustration of one]

90-

11. TWELVE ROYAL CROWN DERBY PORCELAIN ENTREE PLATES

Plain cavetto with diapered and rosetted compartment border in the Imari
taste in blue, iron red, and gold.

Diameter $9\frac{1}{4}$ inches

[See illustration of one]

50-

116- 12. DRESDEN AJOURÉ AND DECORATED PORCELAIN DESSERT SERVICE
Comprising pair of oval compotiers, three round tazzas, two boat-shaped fruit dishes, and twelve plates. Painted with nosegays of flowers, the valanced borders also painted and pierced with *treillage*. [Lot.] (Rogers)

85- 13. TWELVE DRESDEN DECORATED PORCELAIN TEACUPS AND SAUCERS
Painted with flowers and rococo cartouches in the style of the preceding. (Rogers)

42- 14. DELFT DECORATED FAÏENCE GARNITURE
Comprising a pair of ovoid vases with covers and pair of beaker vases with covers. Decorated in *rouge de fer*, blue, and gold in the Imari style. [Lot.] (Conner)
Heights 10½ and 11 inches

[See illustration of two pieces facing page 144]

15- 15. CAULDON BLUE AND WHITE CHINA PART DINNER SERVICE
Plates, platters, cups and saucers, vegetable dishes, etc. Seventy-five pieces; one repaired. [Lot.] (Conner)

SILVER AND SILVER-PLATED WARE

20- 16. CASE OF THIRTEEN SILVER APOSTLE SPOONS IN THE TUDOR TASTE
Master and twelve Apostle spoons with seal tops wrought with falcons; after the set in Corpus Christi College, Cambridge. In leather case.

30- 17. TWO SILVER WINE TASTERS *French, XVIII-XIX Century*
Gadrooned bowls, one punched with bosses and having a strap handle *repoussé* with vines. (Randolph)

25- 18. SILVER TRAVELING SOLITAIRE CARD SET *Birmingham, 1892*
Square box with glass sides paneled with decorative cards, and containing a set of patience cards. Together with a George III Sheffield plate chamber candlestick and snuffers, *circa 1815*. [Lot.] (Rogers)

0- 19. TWO REPOUSSÉ SILVER URNS *Spanish or Italian, XVIII Century*
Elaborately *repoussé* and gadrooned, on high stems.
Heights 7¾ and 8¼ inches

25- 20. SILVER FLUTED BEAKER *Henry Wilkinson & Co., London, 1894*
Plain beaker or miniature champagne bucket, with fluted sides.
Height 5½ inches

35- 21. GEORGE III SHEFFIELD PLATE ALE PITCHER *Circa 1810*
Plain pitcher with gadroon edge, pearwood handle. Height 11 inches

22. GILDED SILVER MANTEL CLOCK London, 1891
 Quadrangular, with balustered columns at the corners and turned steeple
 finial. Height 8¼ inches
 22-10
23. REPOUSSÉ PARCEL-GILDED SILVER SWEETMEAT DISH Swedish, XVIII Century
 Two-handled scalloped bowl, the interior gilded and *repoussé* with a bird
 and a cluster of fruit, bordered with leaf scrolls. Together with an Italian
repoussé silver tripod vase of the period. [Lot.] Length 7½ inches
 30-
24. PAIR SILVER SAUCE BOATS IN THE GEORGIAN TASTE London, 1898
 Valanced boat with gadrooned rim and C-scrolled handle, on three shell-
 molded feet. Length 7½ inches
 55-
25. SILVER COFFEE SERVICE WITH TRAY
 Coffee pot, milk jug, sugar bowl, and oval tray. In plain silver; valanced
 bodies of oval section. [Lot.] Length of tray 16 inches
 45-
26. PAIR ENGRAVED GILDED SILVER BEAKERS IN THE ELIZABETHAN TASTE Tessiers, London
 Plain flaring beaker finely engraved with a collar of floral ornament, with
 pendent lambrequins of flowers and fruit. Height 6¼ inches
 35-
27. SILVER-PLATED TEA TRAY George III Style
 Oblong tray with gadrooned edge and loop handles; chased with a broad
 border of rococo scrolls and foliage. Length 27½ inches
 30-
28. SILVER-PLATED TEA TRAY George III Style
 Type of the preceding, with valanced edge and somewhat different chasing.
Length 26½ inches
 30-
29. MAMMOTH REPOUSSÉ SILVER COVERED POKAL Dutch, XVIII-XIX Century
 Tall elaborately knopped urn on round foot, with domed cover surmounted
 by a figure of Justice; copiously *repoussé* with masks, festoons, urns, and
 vignettes of battle scenes. Height 31 inches
 20-
30. SET OF FOUR SHEFFIELD PLATE CANDLESTICKS AND A
 SNUFFERS AND TRAY Circa 1810-20
 Candlesticks of slender baluster form, with circular base (one imperfect);
 snuffers and tray with gadrooned borders. Together with a six-division toast
 rack and a wine strainer. [Lot.]



[NUMBER 31]

31. EARLY AMERICAN STERLING SILVER COFFEE SERVICE WITH TRAY

F. W. Cooper, New York, w. 1846

160- Urn-shaped coffee pot, creamer, covered sugar bowl and waste bowl, and two-handled oval tray. In the Roman style, bossed with medallions and bright-cut with festooned oval cartouches; chased key-fret borders. [Lot.]

Length of tray 24 inches

[See illustration]

32. ADAM SILVER-PLATED HOT-WATER URN

Wilson, Manchester

60- Ovoid urn in the George III taste with beaded loop handle, incurvate cover with urn finial, and square base on ball feet. *Height 22½ inches*

33. SILVER-PLATED TEA TRAY

George III Style

25- Rounded oblong tray with pierced and gadrooned edge and two gadrooned loop handles; chased with a cartouche and rococo border.

Length 27½ inches

34. SIX SILVER AND SILVER-PLATED TABLE ARTICLES

25- *Ajouré* sweetmeat tray and small basket; three-section condiment set; cigarette box; and silver crumb tray with plated scoop. [Lot.]

35. FIVE ENGLISH SILVER AND CUT GLASS TABLE ARTICLES

27¹³- Three variously shaped cut glass toilet flasks with silver tops; three-section condiment set; and a candlestick. [Lot.]

CHINESE AND JAPANESE OBJECTS

36. SET OF THREE-COLOR PORCELAIN MINIATURE STATUETTES OF THE EIGHT HORSES OF MU WANG

70- Charming figures in variously lively attitudes, glazed in different combinations of green, yellow and aubergine, some white; two duplicate figures, ten in all. Have stands. [Lot.] (*Thieriot*) Height $2\frac{1}{4}$ to $3\frac{1}{4}$ inches

37. TWO CHINESE ORNAMENTS OF ROCK CRYSTAL AND GREEN JADE

20- Lotus-leaf coupe supported on a branch of buds with two perched birds, in mottled sea green jade; and rock crystal figure of a phoenix. Have stands. [Lot.] (*Thieriot*) Heights $3\frac{1}{2}$ and $6\frac{1}{2}$ inches

[See illustration of jade coupe on page 77]

38. SET OF CHINESE CARVED RED AND WHITE IVORY CHESSMEN

20- Thirty-two pieces, ranging in height from two and one-quarter to four inches. [Lot.] (*N. Y. Private Collector*)

39. THREE CHINESE AND JAPANESE DECORATIVE OBJECTS

12- Peking painted enamel bowl and cover, Japanese carved ivory figurine, peasant with frogs, and a Canton porcelain rouge box. [Lot.] (*Alexander*)

40. SET OF CHINESE RED AND WHITE CARVED IVORY CHESSMEN

25- About forty-five pieces ranging in height from one and one-half to three and three-quarters inches. As exhibited. [Lot.] (*N. Y. Private Collector*)

41. JAPANESE CARVED IVORY STATUETTE

37- A young woman in embroidered kimono, a child playing at her feet. (*Alexander*) Height 9 inches

42. SIX CHINESE PORCELAIN STATUETTES AND VASES

Pair of figures of boys, an Immortal, Kuan Yin, and two shaped vases. [Lot.] (*Alexander*) *Ch'ing* Heights $7\frac{1}{4}$ to $8\frac{1}{2}$ inches

43. JAPANESE CARVED IVORY STATUETTE

30- A barefooted fisherman accompanied by a boy who has caught a turtle. (*Alexander*) Height 9 inches

44. PAIR FAMILLE ROSE BALUSTER-FORM VASES WITH COVERS *Yung Chêng*

42- Painted with shrubs of pink and coral red peonies springing from blue rockery, beneath a brilliantly enameled and gilded collar of diaper and lotus lappets; original covers similarly decorated. (*N. Y. Private Collector*) Height $17\frac{1}{4}$ inches

Collection of Richard Canfield, New York

- 27-50 45. CHINESE CARVED IVORY STATUETTE OF AN IMMORTAL *XVIII Century*
Attenuated standing figure of a bearded man with large cranium, holding a staff and fly whisk; has wood stand. (*Alexander*) *Height 12½ inches*
- 42-52 46. CARVED GOLD LACQUER FIGURE OF BUDDHA *Ch'ien-lung*
Standing figure surmounting the lotus throne in several stages, richly carved. (*Alexander*)
- 60- 47. TWO CHINESE DECORATED PORCELAIN JARDINIÈRES
Jardinières or fish bowls decorated with birds and flowers in the colors of the *famille verte*. Each with carved teakwood tabouret. (*Alexander*)
Height of jardiniere 13¾ inches

PAINTINGS

- 12-16 48. SPANISH LADY *H. Humphrey Moore, American: 1844-1926*
A woman in a Spanish shawl seated on a crimson davenport, a guitar at her side. Inscribed and signed. (*Alexander*) *Panel: 10¾ x 7 inches*
- 48- 49. MARINE: SEPIA DRAWING *Peter Monamy, British: 1670-1749*
Depicting two seventeenth century ships tossing in a stormy sea. Signed with initials. (*N. Y. Private Collector*) *India wash: 10 x 16¼ inches*
- 0- 50. PAIR MINIATURE PAINTINGS *J. W. Childs, British: fl. 1816*
Full-length portrait of a British general in dress uniform leaning on his gun; and of his wife at the foot of a garden staircase; signed. *Height 6¼ inches*
- 40- 51. PAIR DECORATIVE MARINE PAINTINGS ON COPPER *Dutch School*
Views of Dutch early eighteenth century men-of-war, in battle and tossing in a storm off a rocky coast. *Height 13¾ inches; length 20½ inches*
- 25- 52. LANDSCAPES AND BATTLE SCENES: TEN GOUACHE MINIATURES
Pierre Joseph Bazin, French: 1797-1866
Charming miniatures depicting rural landscapes, lake scenes and a stormy marine, four battle scenes, and a church festival. In two frames. (*Thieriot*)
- 70- 53. PAIR SMALL DECORATIVE PAINTINGS IN GOUACHE
French School, XVIII Century
Depicting groups of exotic pheasants before a wood on the bank of a stream, in painted medallions. *Height 8½ inches*
- 15- 53A. ANGELS: PAIR PAINTINGS *After Fra Angelico*
Depicting angels in coral red and green robes standing upon clouds, playing musical instruments. Gold backgrounds. Carved tabernacle frames. (*N. Y. Private Collector*) *Arched panel: 16¼ x 6½ inches*

54. FOXHUNTING SCENES: SET OF SIX SMALL PAINTINGS

R. Stone, British: XIX Century

175- Country scenes depicting fox hunters and mail coaches moving on the road.
All signed. [Lot.] (*Thieriot*) Height $4\frac{3}{4}$ inches; length 10 inches

55. VENISE: SOIR

Felix Ziem, French: 1821-1911

30- A view of the Lagoon with gondolas before an island estate at the right, and San Giorgio Maggiore in the left distance. Signed. (*James*)

Watercolor: $7\frac{1}{4} \times 12\frac{1}{2}$ inches

From Boussod, Valadon & Co., New York, 1897

56. THE SPANISH CHURCH: TETUAN, MOROCCO

Sir John Lavery, R.A., Irish: b. 1857

55- Oriental figures in the wide square of the market place; the red and white dome of the church appearing above low buildings. Signed. (*James*)

Panel: $6\frac{1}{4} \times 10$ inches

Esposizione Internazionale d'Arte della Città di Venezia, 1910, no. 64

57. TANGIER: TWO WATERCOLOR PAINTINGS

Sir John Lavery, R.A., Irish: b. 1857

60- Street scenes with figures before the sunlit façades of a yellow stucco building of a *carboneria* and stone portal of a temple. Both signed. (*James*)

Watercolor: $7\frac{1}{4} \times 10$ inches

58. HOMEWARD BOUND

Constant Troyon, French: 1810-1865

30- Twilight scene with a peasant girl in red astride a donkey advancing on a path through woodlands, followed by a flock of sheep and cattle. Signed. (*N. Y. Private Collector*)

Panel: $13\frac{1}{4} \times 9\frac{3}{4}$ inches

59. FLIGHT INTO EGYPT *Narcisse Virgile Diaz de la Peña, French: 1807-1876*

35- Fading sunset with two figures in Spanish costumes, one a woman mounted on an ass, with a man standing in the background. Signed. (*N. Y. Private Collector*)

12 x $9\frac{1}{2}$ inches

Collection of Ralph H. White, New York, 1920

60. HEAD OF A YOUNG GIRL

French School

35- Portrait bust, the head turned slightly to the right, her hair dressed with a pink flower.

Oval, Pastel: $12\frac{1}{2} \times 9\frac{3}{4}$ inches

Collection of Countess de la Béraudière, New York, 1930

61. PORTRAIT OF A LADY WITH AMORS *Rosalba Carriera, Venetian: 1675-1757*

30- A young woman in white holding a tambourine, glancing towards two amors, one playing a flute. (*Alexander*)

Pastel: 21 x 25 inches



[NUMBER 62]

62. THE TOURISTS *Raymundo de Madrazo, Spanish: 1841-1920*

A couple followed by beggars through the Gothic courtyard of a monastery, the man with scholarly interest in a guide book, his youthful companion in a white frock distracted by a child in rags. Signed. (*Alexander*)

30 x 21 $\frac{1}{4}$ inches

40- From M. Knoedler & Co., Inc., New York

[See illustration]

63. THE LOVE LETTER *Auguste Toulmouche, French: 1829-1890*

60- A girl in trailing pink satin gown standing in a Louis XVI interior, beside a table with a bouquet of roses. Signed and dated 1883. (*Alexander*)

25 x 17 $\frac{3}{4}$ inches

41- 64. SPANISH GIRL *Louis Leloir, French: 1843-1884*
 A smiling girl in blue and purple costume leaning against a balustrade overgrown with a rose vine. Signed and dated 1877. (*Kertscher*)

31 x 20½ inches

30- 65. IDEAL HEAD *Walter Blackman, American: 1847-1928*
 A young girl in yellow chiton with dark hair dressed in a chignon; depicted in profile to the right. Signed. (*N. Y. Private Collector*)

19 x 16 inches

15- 66. PEASANT GIRL *José Villegas y Cordero, Spanish: 1848-1921*
 Full-length figure in picturesque costume of red, blue, and yellow, carrying fishing nets over her left shoulder. In the background, a blue sea. Signed. (*N. Y. Private Collector*)

Watercolor: 38¾ x 26¼ inches

15- 67. TWILIGHT ON THE BAY *James Carroll Beckwith, N.A., American: 1852-1917*
 A girl in pink and blue frock seated on a seashore looking out toward a bay of light blue water. Signed. (*Alexander*)

9 x 22 inches

Collection of Carroll Beckwith, New York, 1910

12 1/2 68. ALPES MARITIMES *Alexander Harrison, American: 1853-1930*
 Wide stretch of meadow bordered at the right by an orchard, small houses in the middle distance; before a view of snow-covered mountains. (*N. Y. Private Collector*)

22½ x 32 inches

Exhibited at the Carnegie Institute, Pittsburgh, Pa.

30- 69. THE HIGH CHAIR *William Merritt Chase, N.A., American: 1849-1916*
 A young woman in scarlet-lined black kimono standing before a flowered screen leaning over a baby in a high chair. Signed. (*N. Y. Private Collector*)

Height 40 inches; width 24¼ inches

25- 70. HARBOR SCENE
 Figures loading and working on sailing vessels with brightly colored hulls moored before quays; in the distance, a steamer gliding through the pale water. Signed Quinquela Martin.

31½ x 35 inches

15- 71. LANDSCAPE IN HOLLAND *Alexander Harrison, American: 1853-1930*
 Low sandy shore overgrown with patches of light grass; a sluggish river crossing the middle distance and a windmill appearing on the horizon. Signed. (*N. Y. Private Collector*)

21¾ x 35¼ inches

40- 72. STILL LIFE: PAIR PAINTINGS *Dutch School, XVII-XVIII Century*
 Each with fruit placed beside a covered wine glass upon a marble-topped baroque table partly covered with a velvet drapery. Dark backgrounds. (*N. Y. Private Collector*)

25 x 19¼ inches

73. PORTRAIT OF A LADY

School of Jean Marc Nattier, French: XVIII Century

130- Half-length figure of a young woman with powdered hair dressed with flowers and pearls, wearing a striped écreu gown with blue scarf. Landscape and sky background. (*Alexander*)

32¾ x 26 inches

74. THE FALLS OF TIVOLI

Philip Peter Roos (Rosa da Tivoli), German: 1657-1705

50- Five figures in scarlet, blue, and white costumes fishing from the foreground bank, before a view of the high falls and the ruins of the villa in the background. (*Kertscher*)

40¾ x 58 inches

Collection of Charles L. Frost, Esq. (as by Salvator Rosa), 1876

Collection of George Graham, Esq.

75. THE GUARD

José Villegas y Cordero, Spanish: 1848-1921

50- A Saracen guard in chainmail head-guard with shield and sword, standing before an arched stone entrance giving an alarm. Signed. (*N. Y. Private Collector*)

52 x 32 inches

76. MOUNTAIN LAKE

Joseph Büttler, German: 1822-1885

50- A shepherdess and goats descending a rocky path at the left bordering the steep shore of a blue lake. High snow-covered mountain peaks in the background. Signed and dated *Düsseldorf*, 1865. (*N. Y. Private Collector*)

54 x 74 inches

77. DUCHESS DE ROHAN

Follower of Jean Marc Nattier, French School

75- At three-quarter length in white gown with blue silk scarf, holding a garland of flowers. Landscape background with a tree at left. (*Fish*)

46 x 35 inches

78. STILL LIFE WITH FIGURE

Flemish School, XVII Century

170- Half-length figure of a girl in profile carrying roses; at the right, a copper bowl filled with an assortment of garden flowers. (*Alexander*)

28½ x 52 inches

79. SIR HENRY GUILDFORT

After Hans Holbein

75- Half-length figure standing to half right, wearing a fur-trimmed black coat and gold brocaded doublet, with the collar and pendant of the Order of the Garter. (*N. Y. Private Collector*) Cradled panel: 16¼ x 13½ inches

80. PORTRAIT OF CARDINAL LORENZO ALTIERI *Venetian School, XVI Century*

35- Bust-length portrait portrait to half right in scarlet robe and cap. Inscribed at upper left *Lorenzo Altieri*. (*Sanford*)

25¼ x 20¾ inches

15-⁵⁰
81. MATER DOLOROSA *Manner of Charles LeBrun, French: XVII Century*
The Madonna in rose gown and hooded blue mantle seated at the foot of the
Cross, the emblems of the Passion before her. Landscape background with
turreted castle. (*Kertscher*) 27¼ x 23 inches

35-
82. PAINTING ON PORCELAIN *N. Landgraf, German: XIX Century*
Venus and Cupid. Nude figure of a young girl with pink scarf seated on the
bank of a stream, a flying cupid kissing her cheek. Signed. 18½ x 14 inches

SCULPTURE

12-⁵⁰
83. TERRA COTTA STATUETTE OF AN ANGEL *Magna Graecia, III Century B.C.*
Seated figure, nude to the loins and wrapped in drapery, holding a fruit,
the right arm imperfect; wings swinging from the shoulders. Has stand.
(*N. Y. Private Collector*) Height 9¼ inches

110-
84. TWO TERRA COTTA GROUPS
Nude figures of two athletes, one brandishing a club to strike down a wild
boar; and statuette of the mourning Andromache, kneeling before a cenotaph,
on stand. (*N. Y. Private Collector*) Heights 9½ and 8½ inches

40-
85. TERRA COTTA STATUETTE OF A MAIDEN *Greek, III Century B.C.*
Standing robed figure, the left hand on the hip. Together with a winged
figure, forming part of the handle of a vase, and a small *putto* head. [Lot.]
(*N. Y. Private Collector*) Height of statuette 8¾ inches

30-
86. TWO TERRA COTTA GROUPS
Bacchanalian group of a *putto* with wine cup mounted on a goat surrounded
by a faun and a nymph with apron full of grapes; and a seated matron
embracing her two daughters. On stands. (*N. Y. Private Collector*)
Length of one 12½ inches; height of the other 10¼ inches

10-
86A. TERRA COTTA GROUP
Depicting the seated figure of a warrior, holding a torch, beside his wife in
flowing robes with undraped breast, a cupid between them. Has stand.
(*N. Y. Private Collector*) Height 8¾ inches

15-
87. SCULPTURED MARBLE STATUETTE OF CERES *Roman, I-II Century A.D.*
Seated robed figure of the goddess, laureated and holding a cornucopia filled
with fruit, her right hand resting on an agricultural implement; oval base.
As exhibited. (*N. Y. Private Collector*) Height 20½ inches



[NUMBER 89]

[NUMBER 88]

88. BRONZE STATUETTE *Edward Field Sanford, jr, American: b. 1886*
 Pegasus. Figure of a youth with plumed helmet and shield, astride the flying Pegasus. On stepped circular base, signed and dated 1914. Parcel-gilded; dark patina. Cast by the Roman Bronze Works. (*Sanford*)

Height 27½ inches

[See illustration]

89. BRONZE STATUETTE *Edward Field Sanford, jr, American: b. 1886*
 Ajax. Nude figure of the Greek warrior with plumed helmet, drawn sword, and shield. Brown patina and parcel-gilded. Signed and dated 1914. Cast by A. Kunst. (*Sanford*)

Height 22 inches

[See illustration]

90. SCULPTURED PENTELIC MARBLE BAS RELIEF OF A LOUTROPHOROS

Greek, IV Century B.C.

Stele with small triangular pediment, beautifully sculptured in *base relief* with a tall-necked ovoid vase. Has stand. (*N. Y. Private Collector*)

Height 33 inches

Note: The *loutrophoros* was the vessel containing the water of the nuptial bath, which was brought to the betrothed pair on the eve of marriage. According to Collignon, it was the custom in Athens to place on the tomb of a young person who had died unmarried a *loutrophoros*, so that the present stele is probably that of an adolescent. See Maxime Collignon, *Les Statues Funéraires dans l'Art Grec*, 1911, pp. 212-213, and the article *Loutrophoros* in Saglio-Potter's dictionary.

Collection of Samuel Untermyer, Parke-Bernet Galleries, Inc., 1940

91. BRONZE STATUETTE *Edward Field Sanford, jr, American: b. 1886*

Inspiration. Nude figure of a Greek maiden holding a winged cherub erect in her left hand, draperies framing her body in a semi-circle. Parcel-gilded; green patina. Base signed and dated 1929. Cast by The Gorham Co. (*Sanford*)

Height 19 3/4 inches

92. BRONZE STATUE OF A DOG *Edward Field Sanford, jr, American: b. 1886*

Slightly over life-size figure of a Great Dane in sitting position. On square base, signed and dated 1914. Light golden patina. (*Sanford*)

Height 44 inches

FRENCH AND ITALIAN FURNITURE
AND DECORATIONS

94. FOUR DECORATIVE FRENCH MINIATURES

Portraits of royal and court beauties, including a Bacchante. In ormolu frames. [Lot.] (*Alexander*)

95. SILVERED METAL GROUP

Leda and the Swan. (*Crocker*)

Height 7 inches

96. TWO PAIRS DECORATED PORCELAIN CACHEPOTS

Pair Vieux Paris white and gold tub-shaped *cache pots* painted with flowers, one imperfect; pair of Adam buff-colored *cache pots* printed with Dickensian subjects. [Lot.] (*Alexander*)

Height 5 3/4 and 6 1/4 inches

97. SEASHELL WITH CAMEO CARVING

Finely carved with floral garlands surrounding three Roman portrait heads, in white relief on an agate-brown ground.

Length 7 1/2 inches

17-12 98. BRONZE DORÉ AND SAXE PORCELAIN INKSTAND *Louis XV Style*
Embellished with flowers and a figure of an amor in Saxe porcelain. Together with a pair of Chinese small peony plants in jade, quartz, etc., in porcelain pots. [Lot.] (*Alexander*)

17-12 99. FOUR DECORATIVE EUROPEAN AND ORIENTAL CERAMICS
A Copenhagen potpourri vase, a Satsuma teapot, and two Chinese tomato-shaped boxes. [Lot.] (*Alexander*)

30- 100. AJOURÉ GILDED BRASS DESK SET *Russian, XIX Century*
Consisting of an ornately pierced and chased inkstand, pen tray, stamp box, and table bell. Together with a stationery rack and ash tray, somewhat similar. [Lot.] (*Alexander*)

30- 101. THREE SAXE PORCELAIN AND BISQUE FIGURES
Pair of bisque figures of Apollo and Venus, with amors; group of an Eastern potentate with blackamoor attendant. One imperfect. (*Alexander*)
Heights 7¼ and 9 inches

10- 102. BERLIN PORCELAIN JEWEL CASKET, MOUNTED IN BRONZE DORÉ *Circa 1840*
Rococo *bombé* coffer painted with vignettes with pairs of lovers; elaborate rococo bronze mounts with cherub heads and finial crown.
Length 10½ inches

27-12 103. BRONZE AND GLASS LUSTRE TABLE LAMP AND PAIR
WROUGHT BRASS CANDLESTICKS
Table lamp for diffused electric light, in the Empire style; pair of richly wrought heavy brass candlesticks, in the Renaissance style. [Lot.] (*Conner*)
Heights 9 and 17 inches

[See illustration of candlesticks facing page 82]

30- 104. PAIR VIEUX PARIS DECORATED PORCELAIN VASES
Painted with swags of flowers and bunches of grapes in reserves with gilded borders in a coral red ground; one imperfect. (*Alexander*)
Height 10¾ inches

40- 105. PAIR LATE GOTHIC CARVED, GILDED AND POLYCHROMED STATUETTES *South German, XVI Century*
Standing bearded figures wrapped in cloaks and holding attributes.
Height 16½ inches

25- 106. GILDED BRONZE AND CRYSTAL GLASS LAMP *Louis XVI Style*
Vase-shaped, for diffused electric lighting, festooned with glass beads.
(*Alexander*) *Height 18 inches*

- 40- 107. SET OF THREE VIEUX PARIS DECORATED PORCELAIN URNS
Ovoid urns, one with helmeted lion-mask handles, two with leaf-voluted handles; decorated with Italian landscapes; and on square bases. (N. Y. Private Collector) Heights 11½ and 12½ inches
- 55- 108. CARVED AND POLYCHROMED GROUP OF THE HOLY FAMILY
Westphalian, XVI Century
Depicting the Flight into Egypt with Mary robed in red and holding the Child, seated on the ass, which is led by S. Joseph. Height 16½ inches
- 55- 109. PAIR GREEN GLASS VASES, MOUNTED IN BRONZE DORÉ
French (?), XIX Century
Simulating greenish brown jasper, with ornate gilded bronze foliated mounts. (N. Y. Private Collector) Height 17¼ inches
- 20- 110. GOTHIC CARVED AND POLYCHROMED GROUP *Franco-Flemish, circa 1500*
Standing robed figure, apparently of the Savior, with a donor at the right kneeling before him. Height 18½ inches
- 35- 111. BRONZE AND STATUARY MARBLE MANTEL CLOCK
Tiffany & Co., New York
Composed of an oblong marble plinth surmounted by a bronze group emblematic of Painting. Together with a pair of small bronze urns on black marble base. [Lot.] (N. Y. Private Collector) Height of clock 19½ inches
- 35- 112. TWO FLEMISH GOTHIC STAINED AND PAINTED GLASS PANELS
One depicting a kneeling monk in green with banderole, before a blue and gold background; the other a maiden and two youths before a castle. (N. Y. Private Collector) Height 16¾ inches
- 37 1/2 113. FIVE OLD STAINED AND PAINTED GLASS ARMORIAL PANELS AND TWO SPANDRELS
Panels inset with antique shields of arms in panels of later stained glass; and two Gothic quarter-round spandrel pieces painted with fine tracery. [Lot.] (N. Y. Private Collector) Heights 16½ and 14½ inches
- 38 1/2 114. SIXTEEN PANELS OF ORNAMENTAL STAINED GLASS
Panel
Twelve rectangular and four segmental; in modern tinted glass with variously patterned comes. [Lot.] (N. Y. Private Collector)
- 38 1/2 115. FAENZA MAJOLICA BAS RELIEF *Circa 1600*
Virgin and Child represented among clouds, supported by winged cherubs. Signed G D I. Old painted and gilded wood frame. (Alexander) Height 22 inches; width 16 inches

116. CARVED AND POLYCHROMED STATUETTE OF S. ANTHONY
South German, Early XVI Century
 20- Standing cloaked figure with crutch and holding a missal.
Height 21¼ inches
117. EMPIRE BRONZE DORÉ FIGURINE TABLE MIRROR *French, XIX Century*
 20- An amor standing on a plinth of *rosso antico* marble and supporting a circular mirror. (*Alexander*)
Height 19 inches
118. AJOURÉ GILDED BRONZE AND ENAMEL CLOCK *Russian, XIX Century*
 9- Disc-shaped clock with openwork pediment and oblong plinth, elaborately decorated in colored enamels. (*Alexander*)
Height 29¼ inches
 [See illustration on page 22]
119. PALISSANDRE LACE BOX, WITH BRONZE DORÉ AND LIMOGES ENAMEL MOUNTS *Louis XIV Style*
 25- Appliqué with *bronze doré* medallions of *putti*, those at the corners enclosing Limoges *grisaille* enamel plaquettes with heads of Roman emperors. (*Rogers*)
Length 20 inches
120. LOUIS XV BRONZE DORÉ CARTEL *French, XIX Century*
 45- Drum clock pendent from a bowknotted drapery. *Height 22¾ inches*
121. LOUIS XV BRONZE DORÉ CARTEL *French, XIX Century*
 25- Similar to the preceding; small imperfections to pendent.
Height 22½ inches
122. PAIR GILDED BRONZE CHENETS *Louis XVI Style*
 1212 Formed as garlanded urns surmounting shaped plinths. (*Alexander*)
Height 19 inches
- 122A. PAIR WROUGHT IRON WALL SCONCES AND GOTHIC BOOK COVER
 20- Sconces in the form of scrolled and serrated leafage, each supporting one light fitted for electricity; book cover with Gothic figure of a bishop saint on a gold background, the reverse with escutcheons. [Lot.] (*Sanford*)
123. PAIR ROUGE ANTIQUE MARBLE COVERED URNS MOUNTED IN BRONZE DORÉ *Louis XV Style*
 35- Gadrooned urn and cover, mounted in *bronze doré* with bifurcate bulrush handles, gadrooned leaf-scrolled rim, artichoke finial, and square base. (*Rogers*)
Height 25 inches
124. CUT GLASS TABLE GARNITURE, MOUNTED IN GILDED BRONZE, WITH PLATEAU
 10- Oval jardiniere and two capstan-form jars, cut with sprigs of flowers and spatulae; and a mirror plateau; all rimmed in *bronze doré*. [Lot.]
Length of plateau 31 inches

- 20- 125. GILDED BRONZE CLOCK *Louis XV Style*
 Elaborate rococo case in the style of Caffieri, surmounted by an allegorical female figure; the dial inscribed *Ghiout l'Ainé, à Paris.* (Alexander)
 Height 24¼ inches
- 50- 126. DIRECTOIRE WALNUT GALLERY-TOP OVAL TABLE
 Oval top with pierced gallery, repaired; plain fluted frieze with drawer, square canalated tapering legs. (Thieriot)
 Height 31 inches; width 29 inches
- 15- 127. LOUIS XV FRUITWOOD LISEUSE *Provençal, XVIII Century*
 Small two-tier table on curved and tapered supports, with galleried top. A few repairs. (Crocker)
 Height 32¾ inches; width 18 inches
- 40- 128. CARVED AND GILDED BANQUETTE AND A CHILD'S ARMCHAIR *Louis XVI Style*
 Oblong bench with Savonnerie wool tapestry top; child's armchair in old silk brocade. [Lot.] (Alexander)
- 50- 129. MAHOGANY CIRCULAR TABLE, MOUNTED IN BRONZE DORÉ *Empire Style*
 Frieze and square tapered legs enriched with mounts. (Alexander)
 Height 27¾ inches; diameter 23½ inches
- 30- 130. GILDED THREE-FOLD SCREEN WITH SILK EMBROIDERY PANELS *Louis XV Style*
 Rococo-carved frame with panes of glass surmounting panels of buff silk floral embroidery. (Rogers)
 Height 5 feet 2 inches; length 5 feet 9 inches
- 45- 131. ACAJOU OCCASIONAL TABLE *Empire Style*
 Round top of gray S. Anne marble, plain frieze on three columnar legs. (N. Y. Private Collector)
 Height 28 inches; diameter 19½ inches
- 30- 132. DECORATED IVORY YELLOW LAQUÉ SMALL CABINET *Louis XV Style*
 Front enclosed by four doors, decorated in blue *camäeu* with pastorals and trophies, after Huet. (Sheridan)
 Height 40 inches; width 19½ inches
- 32 1/2 133. LOUIS XVI LAC AND DECORATED ENCOIGNURE *Italian, Late XVIII Century*
 Front enclosed by one door painted *en grisaille* with Roman ruins, after Pannini; top simulating green marble. (Sheridan)
 Height 38½ inches; width 30½ inches



[NUMBER 134]

[NUMBER 135]

134. PAIR LOUIS XV TULIPWOOD MARQUETERIE OCCASIONAL TABLES
MOUNTED IN BRONZE DORÉ

Shaped square top bordered with a gilded bronze molding and decorated with foliage *marqueterie* in rosewood in a ground of matched tulipwood. One drawer, cabriole supports with bronze rocaille shoes. (*Sheridan*)

Height 28 inches; width 18 inches

[See illustration of one]

135. PAIR LOUIS XV CARVED WALNUT BERGÈRES IN SILK BROCADE

French, XVIII Century

With rounded high back, gently voluted arms, shaped seat, and cabriole supports. Upholstered and covered in flowered pale green silk brocade; loose seat cushion. (*Crocker*)

[See illustration of one]



[NUMBER 136]

136. PAIR UNUSUAL RÉGENCE SILVERED BRASS WALL MIRRORS

French, XVIII Century

160- Formed of a species of pyramid of reversed rococo C-scrolls crested with a cartouche enclosing a spray of flowers; in *repoussé* sheet brass mounted on wood panels.
Height 50 inches; width 27 inches

[See illustration]

137. BOIS DE ROSE CABINET VITRINE, MOUNTED IN BRONZE DORÉ

Louis XV Style

105- With mirror back, glass shelves, and glazed sides and doors. (*Alexander*)
Height 54½ inches; width 43 inches

138. CARVED LIGHT WALNUT DRESSING TABLE *Queen Anne Style*
 Three drawers; carved cabriole legs with scrolled feet. (Sheridan)
 Height $29\frac{1}{2}$ inches; width 23 inches
139. PAINTED CHINOISERIE FOUR-FOLD SCREEN
Southern French, Early XVIII Century
 Canvas decorated with Chinese figures in a grotesque flower garden with two pagodas; needs repair. (N. Y. Private Collector)
 Height 5 feet 10 inches; length 6 feet 8 inches
140. ACAJOU THREE-TIER ETAGÈRE *French, circa 1820*
 With three oblong shelves on slender columnar supports; round tapering legs.
 Height $38\frac{1}{2}$ inches; width 22 inches
141. CARVED AND LAQUÉ BANQUETTE IN RED CUT VELOURS *Louis XVI Style*
 Oblong top in old cut velours, fluted frame and supports *laqué* ivory white and gold. (Sheridan)
 Height 20 inches; length 46 inches
142. CARVED AND PARCEL-GILDED WALNUT TABLE *Louis XIV Style*
 Top inlaid and banded with burl walnut, one drawer; carved scrolled supports. (Alexander)
 Height 30 inches; length 42 inches
143. MAHOGANY LIBRARY TABLE, MOUNTED IN BRONZE DORÉ *Empire Style*
 Oblong top on conventionalized lyre-shaped supports enriched with gilded bronze mounts; four drawers. (Alexander)
 Height $29\frac{1}{2}$ inches; length 56 inches
144. DECORATED GREEN AND IVORY LACQUER COMMODE *Queen Anne Style*
 Half-round top and front decorated with panels of *chinoiserie* in a light green ground; fitted with drawers and cupboards. (Sheridan)
 Height 33 inches; length $40\frac{1}{2}$ inches
145. EMPIRE MAHOGANY CABINET, MOUNTED IN BRONZE DORÉ
French, XIX Century
 Front enclosed by a door; shelf above with mirror back. (Alexander)
 Height 59 inches; width $23\frac{1}{4}$ inches
146. PAIR CARVED AND LAQUÉ SMALL CONSOLES *Louis XV Style*
 Frame and supports *laqué* gray and gold; half-round top of yellow Siena marble. (Sheridan)
 Height 28 inches; width $19\frac{1}{2}$ inches
147. CHARLES X FRUITWOOD LYRE TABLE
 Oval tray top with small underslung drawer, on lyre supports with under-shelf.
 Height $27\frac{1}{2}$ inches; width $21\frac{1}{2}$ inches



[NUMBER 148]

RUSSIAN GILDED BRONZE AND ENAMEL CLOCK : NUMBER 118

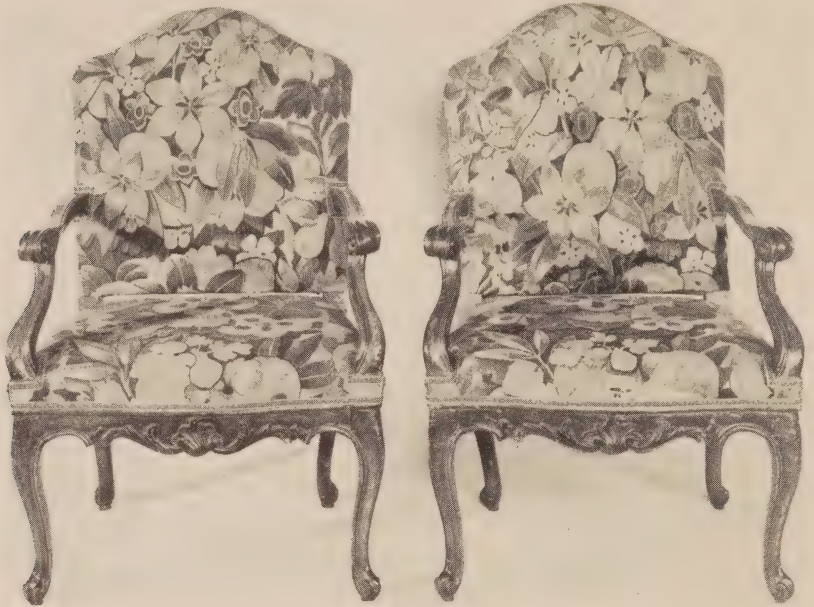
148. EMPIRE MAHOGANY CONSOLE, MOUNTED IN BRONZE DORÉ

French, XIX Century

100 - Hall console with drawer and cornucopia-shaped supports. (Alexander)
Height 33¾ inches; width 33½ inches

[See illustration]

149. INLAID TULIPWOOD GUÉRIDON *Louis XVI Style*
Circular table for an urn or jardiniere, with white marble top, drawer, undershelf, and gilded bronze mounts. (Alexander)
Height 31½ inches; diameter 13¾ inches
150. RICHLY CARVED AND GILDED SALON CONSOLE. *Louis XV Style*
Shaped top covered with a slab of *rouge de Flandre* marble, supported on gondoled understructure elaborately carved with rocaille ornament. (Alexander)
Height 36 inches; length 7 feet 6 inches
151. INLAID ROSEWOOD BUREAU À DOS D'ANE *Louis XV Style*
Hinged slant flap enclosing drawers and shelves, three drawers in front; cabriole supports and bronze mounts. (Sheridan)
Height 39½ inches; width 29½ inches
152. CARVED AND PARCEL-GILDED WALNUT LOVE SEAT IN JARDINIÈRE VELVET *Louis XIV Style*
Covered in considerably worn jardiniere velvet designed with baroque flowers and foliage in an ivory ground; carved supports and stretchers. Two loose seat cushions. (Alexander)
Length 4 feet 9 inches
- 152A. CARVED AND PARCEL-GILDED WALNUT LOVE SEAT IN JARDINIÈRE VELVET
Companion to the preceding. (Alexander)
153. EMPIRE PARCEL-GILDED MAHOGANY PIER MIRROR *Italian, circa 1810*
Frame embellished with disengaged columns at either side, a gilded pineapple and laurel wreath ornament on the pediment; black and gold *vert eglomisé* frieze depicting an antique motive. (Sheridan)
Height 5 feet 11 inches; width 34 inches
154. IVORY, BLUE AND GOLD LACQUER DRESSING TABLE *Italian Louis XV Style*
Kidney-shaped, with drawers and cupboards in front, mirror and plate glass top. Together with a wall mirror in the Directoire taste. [Lot.] (N. Y. Private Collector)
Height 5 feet; width 49½ inches
155. RÉGENCE CARVED AND GILDED WALL MIRROR
Arched slightly scrolled frame bordered with carved endive leafage and blossoms, and crested by a rocaille motive. (N. Y. Private Collector)
Height 41 inches; width 27 inches
156. PAIR CARVED AND GILDED TABOURETS IN JARDINIÈRE VELVET *Louis XIV Style*
Top woven with a garlanded urn of flowers in a gray ground; square tapering gilded legs with curved stretchers. (N. Y. Private Collector)



[NUMBER 157]

157. PAIR RÉGENCE CARVED WALNUT AND BRUSSELS TAPESTRY ARMCHAIRS
French or Flemish, Early XVIII Century

Arched square back and seat in tapestry of the period, woven with a rich design of fruits and foliage, in reds, blues, greens, and yellow; walnut molded and voluted arms and cabriole supports. (Crocker)

[See illustration]

159. PAIR LOUIS XVI BEECHWOOD AND CRETONNE TOILE BERGÈRES
Normandy, XVIII Century

Narrow chair with arched back, closed sides and seat cushion covered in modern green-printed ivory cretonne with pastoral groups after Huet; round fluted and tapering legs, collared, and joined by turned stretchers.

Collection of Me. Henri Baudoin, Paris



[NUMBER 160]

MEISSEN PORCELAIN BASKETS OF FLOWERS: NUMBER 613

160. LATE LOUIS XVI ACAJOU COMMUNE

French, XVIII Century

Oblong top of gray S. Anne marble with half-round front corners, over fluted pilasters and plain round tapering legs; enclosing three graduated long drawers with angular bail handles. *Height 34 inches; length 51 inches*

[See illustration]

161. LOUIS XVI WALNUT MARQUETERIE BEDSTEAD

Austrian, XVIII Century

Passed

With low scrolled footboard, the headboard with high rococo-scrolled pediment centred with an inlaid panel of trellis design; deep paneled rails. With wire spring and mattress. (*N. Y. Private Collector*)

Height 58½ inches; width 47 inches

162. EMPIRE ACAJOU COMMODOE, MOUNTED IN BRONZE DORÉ

French, circa 1810

70-

Front with round columns flanking four long drawers; top of white-speckled black marble. (*Sheridan*)

Height 37 inches; length 50 inches

163. LOUIS XVI CARVED AND GILDED CONSOLE

25-

Half-round top supporting a slab of white tapestry marble, the frieze and the round tapered legs pierced and carved with guilloche, fluting, laurel swags, etc. (*Sheridan*)

Height 37½ inches; length 35½ inches

164. CARVED WALNUT AND BLUE CUT VELVET ARMCHAIR

Spanish, XVII Century

30-

With arched rectangular back and seat in blue silk velvet, rudely carved arm supports, plain legs and stretchers. (*Crocker*)

165. LOUIS XVI CARVED AND LAQUÉ LOVE SEAT IN PEACH SILK VELVET

60-

Molded frame of oval contour, on round tapered and fluted legs, lacquered white; upholstered in good quality peach velvet. Loose seat cushion. (*Sheridan*)

Length 53 inches

166. PAIR CARVED AND GILDED PIER TABLES WITH MARBLE TOP

Louis XVI Style

110-

Oblong table with carved frieze and fluted round tapered supports, covered with a slab of yellow Siena marble. One marble top slightly imperfect. (*Sheridan*)

Height 32 inches; length 50 inches

167. INLAID TULIPWOOD AND ROSEWOOD HEART-SHAPED COIFFEUSE

Louis XV Style

85-

Small heart-shaped cabinet table with two pivoting drawers, hinged top mounting a mirror, a door on one side; veneered in a chevron design in light and dark woods. (*Sheridan*)

Height 31½ inches; width 15½ inches

168. CARVED AND LAQUÉ SOFA IN APRICOT SILK VELVET

Louis XVI Style

70-

Of rectangular form, with high straight back and arms upholstered and covered in buttoned apricot velvet; carved frame and supports painted green and gold. (*Sheridan*)

Length 7 feet



[NUMBER 170]

[NUMBER 169]

169. LOUIS XV INLAID TULIPWOOD BOUDOIR DESK PLAQUÉ WITH PORCELAIN
French, XIX Century

155- Small *bombé* slant-front desk with fitted interior and cabriole legs; rimmed in ormolu and inset with oval plaques of Sèvres type porcelain with bouquets of flowers and amorous scene. (Rogers) Height 33 inches; width 18 inches

[See illustration]

170. LOUIS XV CARVED WALNUT AND OLD GOLD SATIN BROCADE BERGÈRE
French, XVIII Century

195- Comfortable chair with arched back *à ballon*, low closed arms with armpads, and seat cushion all covered in satin floral brocade; molded frame with cabriole legs.

[See illustration]

171. PAIR LOUIS XV CARVED WALNUT AND BUFF LINEN SIDE CHAIRS

French, XVIII Century

100-

Cartouche-shaped molded back with carved floral cresting, flower-carved rails and cabriole legs; back and seat in buff linen.

172. LOUIS XVI CARVED BROWN AND GOLD LAC PIER TABLE

Italian, XVIII Century

25-

The shaped frieze and fluted supports painted brown and gold, and carved with amatory emblems; yellow Siena marble top. (*Sheridan*)

Height 33½ inches; length 47½ inches

173. CARVED WALNUT AND FAWN VELVET CANAPÉ

Louis XV Style

55-

Horseshoe sofa crested with a cluster of blossoms, the serpentine rails similarly carved; cabriole legs. Covered in fawn velvet with seat cushion, showing some discoloration. (*N. Y. Private Collector*)

Length 5 feet 5 inches

174. CARVED WALNUT AND FAWN VELVET CANAPÉ

Louis XV Style

55-

Companion to the preceding. (*N. Y. Private Collector*)

175. CARVED, LAQUÉ AND PARCEL-GILDED OVERMANTEL MIRROR

French, XVIII Century

30-

Arched mirror with gilded triangular spandrel rosettes and flanked by fluted pilasters with gilded Ionic capitals; frieze of *ajouré* gilded leaf scrollings.

Height 5 feet 1 inch; width 43 inches

Collection of the Comte de Nieuport

176. PAIR FORGED IRON TRIPOD TORCHÈRES

Italian, Early XVII Century

30-

Round standard enclosed by clustered voluted scrolls, on reverse-scrolled tripod; fitted for electricity. (*N. Y. Private Collector*)

Height 5 feet 6 inches

From the Brummer Gallery, Inc., New York

177. BRONZE DORÉ CLOCK, ON ACAJOU AND BRONZE DORÉ PEDESTAL

Régence Style

175-

Elaborate yoke-shaped clock ornamented with mascarons, cupids and seated nymph, and crested by a helmeted amor; on tall *guéridon* with *bronze doré* panels, a hanging trophy, female bust shoulder ornaments, and paw feet. (*Kertscher*)

Total height 8 feet 10 inches; width 25 inches

178. PAIR INLAID ACAJOU AND KINGWOOD PETITES COMMODES

Louis XV Style

110-

Three-drawer upright commode in the manner of Mewesen, with inlaid cartouche-shaped panels and rose marble tablet.

Height 29 inches; width 21 inches



[NUMBER 179]

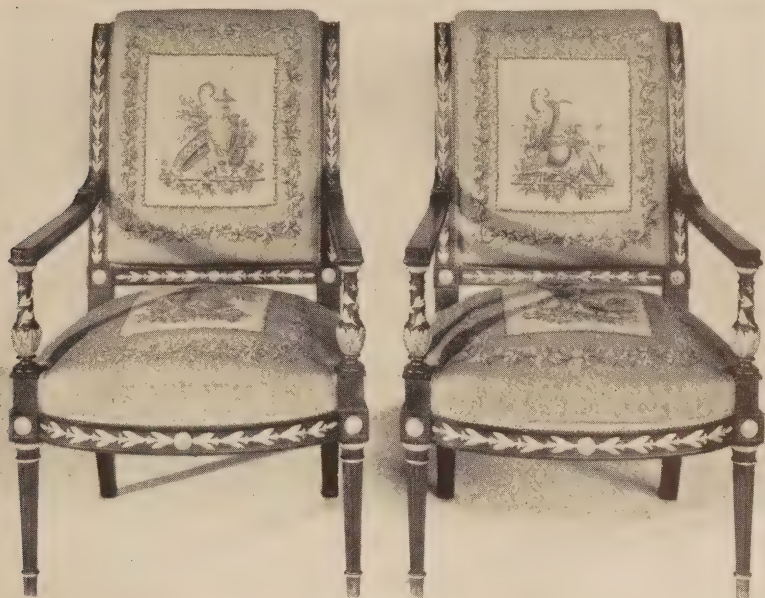
179. DECORATED RED LACQUER THREE-FOLD SCREEN

Charles Baskerville, jr, American: 1896-

Two nude figures meeting and embracing in a tropical setting, the figures a dark purple color, the foliage brilliant green, silhouetted against a coral red background. Signed BASKERVILLE. (*Crocker*) Height 6 feet; width 5 feet

[See illustration]

- 140- 180. KINGWOOD AND ACAJOU MARQUETERIE CENTRE TABLE *Louis XV Style*
Serpentine oblong rimmed top, bordered and inlaid with sprays of flowers, valanced frieze with two drawers and rococo *bronze doré* mounts, also inlaid; cabriole legs. (*Kertscher*) Height 30½ inches; length 50 inches
- 50- 181. CARVED WALNUT AND TAPESTRY SOFA *Régence Style*
Oblong back with wings and seat all covered in choice hand-loomed tapestry, woven with interlacing green branches of large pink roses; on shell- and flower-carved cabriole legs with triple X-stretcher. Length 6 feet 10 inches
- 80- 182. INLAID BURL WALNUT SLANT-FRONT WRITING DESK *North German, circa 1840*
Shallow slant-front boudoir desk fitted with small drawers, double cupboard opening to shelves, and a long drawer below. Banded and inlaid with cartouches, those of the flap enclosing bird figures. (*Thieriot*)
Height 39 inches; width 29½ inches
- 70- 183. INLAID ACAJOU OCCASIONAL TABLE *Louis XV Style*
Serpentine oblong top of *rouge royale* marble, single drawer, cabriole legs; mounted with *bronze doré* rococo appliqués. (*Rogers*)
Height 29½ inches; width 25 inches
- 100- 184. LOUIS XV INLAID KINGWOOD AND SATINWOOD WRITING TABLE *French, XIX Century*
Oblong top paneled in leather and rimmed with chased ormolu; single end drawer, cabriole legs with *bronze doré* rococo rim mounts.
Height 29 inches; length 32 inches
- 80- 185. CARVED WALNUT AND FAWN SATIN DAMASK CANAPÉ *Louis XV Style*
Low closed sofa with serpentine molded frame and cabriole legs; covered in fawn satin floral damask with seat cushion and two small cushions. (*Thieriot*)
Length 59 inches
- 90- 186. LOUIS XV CARVED WALNUT SOFA IN EIGHTEENTH CENTURY VERDURE TAPESTRY
Of quadrangular form, with shaped outline; high straight back and arms and short cabriole legs. Covered in eighteenth century Flemish verdure tapestry; loose seat cushion. Molded walnut frame of later date. (*Sheridan*)
Length 6 feet 2 inches
- 35- 187. ACAJOU CONSOLE TABLE *Louis XVI Style*
Semi-oval galleried top of veined white marble, paneled frieze with single drawer, on round swelling and fluted legs with marble undershelf.
Height 34½ inches; width 26 inches



[NUMBER 188]

188. PAIR EMPIRE MAHOGANY ARMCHAIRS IN AUBUSSON TAPESTRY

French, XIX Century

170- The upholstered back and seat in silk tapestry, woven with groups of still life objects such as urns, musical instruments, and fruits in square medallions in a soft pink ground with grapevine border. Frame ornamented with gilded bronze mounts. (*Alexander*)

[See illustration]

189. SET OF FOUR EMPIRE MAHOGANY SIDE CHAIRS IN AUBUSSON TAPESTRY

French, XIX Century

180- *En suite* with the preceding. (*Alexander*)

190. PAIR EMPIRE MAHOGANY BERGÈRES IN AUBUSSON TAPESTRY

French, XIX Century

190- *En suite* with the preceding, the frames varying somewhat in design. (*Alexander*)

191. EMPIRE MAHOGANY SETTEE IN AUBUSSON TAPESTRY

French, XIX Century

85-

En suite with the preceding; four loose cushions in similar tapestry.
(*Alexander*) *Length 5 feet*

192. EMPIRE MAHOGANY FIRE SCREEN IN AUBUSSON TAPESTRY

French, XIX Century

25-

En suite with the preceding. (*Alexander*)
Height 30 inches; width 22 inches

193. MAHOGANY OVERMANTEL MIRROR

Empire Style

Parish

Rectangular and ornamented with gilded bronze mounts. (*Alexander*)
Height 43 inches; length 61 inches

194. DECORATED OLD VENETIAN GLASS WALL MIRROR

Cartouche-shaped frame entirely of tinted glass embellished with flowers and leaves in pale turquoise, rose pink, and yellow, also etched ornament.
(*Conner*) *Height 5 feet 2 inches; width 33½ inches*

165-

194A. DECORATED OLD VENETIAN GLASS WALL MIRROR

Variation of the preceding; imperfect. (*Conner*)
Height 55 inches; width 37 inches

110-

195. PAIR LOUIS XV FRUITWOOD AND YELLOW SILK SIDE CHAIRS

French, XVIII Century

120-

The shaped back and cabriole supports carved with flowers on the crest and knees; covered in figured yellow silk of modern date. (*N. Y. Private Collector*)

196. RÉGENCE CARVED AND GILDED GRANDE BERGÈRE IN GREEN DAMASK

Canted square back, arms, seat, and seat cushion covered in damask; frame and supports carved with shells and leafage. (*Sheridan*)

25-

197. INLAID KINGWOOD NEST OF DRAWERS

Louis XV Style

55-

Tall nest of six drawers with chamfered pilasters and *chinoiserie* bail handles of *bronze doré*; *rouge royale* marble top. *Height 52 inches; width 20 inches*

198. FOUR LOUIS XVI CARVED AND GILDED SIDE CHAIRS IN NEEDLEPOINT

French, XIX Century

160-

Arched back *à ballon*, the frame guilloche-carved and supported on voluted serpentine legs; covered in needlepoint worked with medallions containing hanging musical trophies garlanded with flowers, in an ivory ground. (*N. Y. Private Collector*)

199. LOUIS XVI CARVED AND GILDED CANAPÉ IN NEEDLEPOINT
French, XIX Century
 Needlepoint *en suite* with the preceding; frame with round, fluted, and tapering legs. (N. Y. Private Collector) *Length 5 feet 8 inches*
200. LOUIS XV INLAID WALNUT CENTRE TABLE *Flemish, XVIII Century*
 Oblong top veneered with quartered burl walnut inlaid with *acajou* scrolls, and with broad crossbanding; valanced frieze with small drawer, cabriole legs. (Thieriot) *Height 30 inches; length 37 inches*
201. LOUIS XVI CARVED AND INLAID WALNUT COMMODE
Provençal, XVIII Century
 Three-drawer commode, paneled with light wood inlay; on round tapered and fluted legs. (Sheridan) *Height 35½ inches; length 40 inches*
202. PAIR ACAJOU MARQUETERIE BOMBÉ PEDESTALS *Louis XV Style*
 Quartered and inlaid with checker motives and bowknotted floral *marqueterie*, with rococo *bronze doré* rim mounts; *brèche d'Alep* marble tablet. (Rogers) *Height 48 inches; width 13½ inches*
203. LOUIS XV INLAID ACAJOU AND TULIPWOOD COMMODE
French, XVIII Century
 Oblong top with break front of gray S. Anne marble, three long drawers following the contour of the top and paneled with tulipwood; chamfered pilasters, cabriole legs. Reconstructed. *Height 35½ inches; length 41 inches*
204. PAIR ACAJOU TWO-TIER CONSOLES, MOUNTED IN BRONZE DORÉ
Louis XVI Style
 With white tapestry marble top and undershelf, mirror back and one drawer. (Crocker) *Height 34½ inches; length 45 inches*
205. PAIR RÉGENCE CARVED OAK AND VERDURE TAPESTRY ARMCHAIRS
 Arched square back and wide seat in wool tapestry woven in blues, greens, and tans, trimmed with bronze-headed nails; leaf-carved arms, seat frame, and cabriole supports. (Sheridan)
206. LOUIS XV WALNUT SECRÉTAIRE *French, XVIII Century*
 Upper section with open front containing pigeonholes and serpentine-fronted small drawers and a pull-out leather-covered writing slidé; valanced skirt with two small drawers, cabriole legs. Reconditioned.
Height 41 inches; width 31½ inches

- 50- 207. PAIR WROUGHT BRONZE TRIPOD TORCHÈRES *Italian Renaissance Style*
 Massive balustered and tiered candlestick wrought with leafage, masks,
 Medici escutcheons and other Renaissance motives; three claw feet. (N. Y.
 Private Collector) *Height 5 feet 5 inches*

- 65- 208. SCULPTURED WALNUT STIPO À BAMBOCCI *Umbrian Renaissance*
 Upper section with two frieze drawers above a fall front veneered with root
 walnut and opening to small drawers surrounding an architectural cup-
 board, the frieze and pilasters sculptured with figures in high relief; on
 cabinet carved with fluted cartouches, between freestanding columns; paw
 feet. With restorations. *Height 5 feet 2 inches; width 37 inches*

- 45- 209. CARVED WALNUT, ROSEWOOD MARQUETRY AND
 EBONIZED CABINET ON STAND *Flemish Baroque*
 Ebonized cabinet with double doors opening to a nest of small drawers and
 cupboards and inset with carved walnut panels depicting allegorical and
 mythological figures, animals and birds, the inside of the doors inlaid with
 floral marquetry; on spiraled ebonized stand.
Total height 5 feet 2 inches; width 39 inches

- 25- 210. CARVED WALNUT AND VERDURE TAPESTRY ARMCHAIR *Louis XIII Style*
 Back and seat in old Flemish verdure tapestry, carved and turned rails.
 (Sheridan)

- 80- 211. PAIR LOUIS XVI BLUE AND GOLD LAQUÉ CARVED
 ARMCHAIRS IN NEEDLEPOINT *Italian, XVIII Century*
 Flaring square back and seat in yellow and blue wool needlepoint, frames
 carved with guilloche and fluting. (Crocker)

- 250- 212. ACAJOU AND TULIPWOOD BOMBÉ COMMODE, MOUNTED IN BRONZE DORÉ
Louis XV Style
 Serpentine top of *brèche violette* marble, *bombé* sides with cupboards and
 valanced front with two drawers. Elaborate rococo *bronze doré* mounts
 and winged caryatids at knees. (Kertscher)
Height 35 inches; length 5 feet 5 inches



[NUMBER 213]

213. LOUIS XVI BURL ELM MARQUETERIE COMMODE

Flemish(?), XVIII Century

70- Oblong top with serpentine front containing two drawers with bowknotted escutcheons and ring handles; inlaid square tapering legs. Veneered with a trellis design, the top centring an oblong panel of landscape *marqueterie*. One drawer rebacked. (N. Y. Private Collector)

Height 27½ inches; length 33 inches

[See illustration]

214. PAIR PARIS HAND-PAINTED TURQUOISE BLUE PORCELAIN
COVERED URNS, WITH STANDS *Dated 1876*
Mammoth ovoid urn with incurvate neck and foot reserved with white and
270- gold flutings, the body painted with ladies and gentlemen examining statues
before a garden wall, signed Eug. Sieffert, 1876. Carved and gilded cabriole
stand on fluted plinth. [Lot.] (*Kertscher*)
Height of vase 50 inches; of stand 33 inches
215. LOUIS XV CARVED AND PAINTED BEDSTEAD *Spanish, XVIII Century*
30- The shaped high headboard painted with two pastoral scenes in cartouches
in a red and gold ground, decorated with rocaille flower and scroll ornament.
(*Sheridan*) *Height 6 feet 9½ inches; width 59 inches*
216. CARVED, INLAID AND PARCEL-GILDED WALNUT AND TULIPWOOD
215- BEDROOM SUITE IN THE LOUIS XVI TASTE
Palmer & Embury, Orsenigo Co., New York
Comprising a pair of bedsteads with box-springs and mattresses, a chifforobe,
a five-drawer commode, and a bedside table. Enriched with matched panels
of walnut bordered with tulipwood, carved and parcel-gilded. [Lot.]
(*N. Y. Private Collector*)
217. SET OF EIGHT CARVED AND GILDED DINING CHAIRS IN GREEN
80- CUT VELOURS *Louis XIV Style*
One armchair and seven side chairs with rectangular backs and seats in cut
velours; carved and gilded supports and stretchers. (*Alexander*)
218. SET OF EIGHT CARVED AND GILDED DINING CHAIRS IN GREEN
60- CUT VELOURS *Louis XIV Style*
En suite with the preceding. (*Alexander*)
219. SET OF TEN CARVED AND GILDED DINING CHAIRS IN GREEN
100- CUT VELOURS *Louis XIV Style*
En suite with the preceding; all side chairs. (*Alexander*)
220. CARVED AND PARCEL-GILDED WALNUT EXTENSION DINING TABLE
Panel *Louis XIV Style*
Oblong top on gilded columnar supports, extended by inserting sixteen loose
leaves. (*Alexander*) *Height 30 inches; width 4 feet 11 inches;*
length closed 4 feet 10 inches extending to 24 feet 10 inches
221. PAIR SCULPTURED OAK ARMCHAIRS *Renaissance Style*
Panel The paneled high back carved with figures of warriors. (*Alexander*)

222. LOUIS XVI CARVED AND GILDED TABLE AND A GUÉRIDON
 Table with top of mottled yellow and brown marble, with bronze gallery; four tapered and fluted columnar supports. Tripod *guéridon* or pedestal with *fleur de pêche* marble top. [Lot.] (*Alexander*)
223. PAIR CARVED WALNUT AND RUBY VELVET STATE CHAIRS
Italian Renaissance
 Seat and oblong back in ruby velvet trimmed with green braid galloon and fringe; open flat arms, square legs with interlaced ribbon stretcher.
224. EMPIRE MAHOGANY CHEVAL MIRROR, MOUNTED IN BRONZE DORÉ
French, XIX Century
 Composed of oval swivel mirror supported by two columns capped with eagle. (*Crocker*)
Height 6 feet 5 inches; width 36 inches
225. SET OF FOUR JAPANESE SILK EMBROIDERY PANELS
 Together, depicting herons under pine trees by the lake shore. Framed. [Lot.] (*Conner*)
226. CARVED OAK HALL BENCH
Italian Renaissance Style
 Furnished with plum velours seat cushion. (*Alexander*) *Length 59 inches*
227. PAIR OAK AND BROWN LEATHER BENCHES
 With X-shaped supports and turned stretcher. (*Alexander*)
Height 18 inches; length 36 inches
228. SEWING TABLE AND STOOL
 Small walnut silk-lined sewing stand in the Directoire style; Georgian style stool in old blue silk. [Lot.] (*Conner*)
229. PAIR WROUGHT LEAD ANDIRONS
Louis XIII Style
 Cast with allegorical figures and other late Renaissance ornamentation. (*Alexander*)
Height 25 inches

[END OF FIRST SESSION]

#13.695-

SECOND SESSION

Friday, April 18, 1941, at 2 p. m.

CATALOGUE NUMBERS 230 TO 440 INCLUSIVE

ANTIQUÉ EMBROIDERIES, VELVETS, AND BROCADES

230. PAIR LOUIS XVI SILK PETIT POINT PICTURES

Southern French, XVIII Century

80- Beautifully worked in pastel colors, one with figures of a youth and maiden in a swing, the other with a lady and child talking to a pilgrim, before mountainous landscape; key-fret border. *Height 24 inches; length 26 inches*

231. BRUSSELS RENAISSANCE TAPESTRY CUSHION

XVI Century

35- Woven with two urns of flowers on an ivory ground, within pergolas. (*Byron*)

232. TWO SMALL BROCADE AND EMBROIDERY TABLE COVERS

Early XVIII Century

25- One in Venetian ivory silk floral brocade; the other embroidered on white silk with floral sprays and monstresses. (*Byron*)

233. SILVER-EMBROIDERED OLD ROSE VELVET BANNER *Spanish, XVII Century*

35- Swallowtail banner studded with silver stars, centring a garlanded escutcheon surmounted by an inscription. *Length 7 feet; width 42 inches*

234. THREE SMALL TABLE COVERS

20- In apple green silk damask, rose and écru satin brocade, and Japanese aubergine and gold brocade, respectively. [*Lot.*] (*Byron*)

235. SILVER AND SILK CHENILLE-EMBROIDERED IVORY SATIN ANTEPENDIUM

French, circa 1700

15- Worked in silver with leafy festoons supporting nosegays of flowers and entwined with trailing floral branches worked in colored chenilles.

Length 6 feet 7 inches; depth 45 inches

236. GREEN AND GOLD BROCADE TABLE COVER

Persian, circa 1800

0- Woven with an allover lattice of infloretted 'pear' motives, within a floral border of gold brocade. (*Byron*)

35 inches square

237. TWO ANTIQUE TEXTILES

75- Fragment of an Indo-Persian sixteenth century carpet, much worn; Italian baroque silk and bullion-embroidery table mat. (*Alexander*)



[NUMBER 238]

238. GOLD AND SILK APPLIQUÉ-EMBROIDERED CUT VELVET
SYNAGOGUE HANGING

Italian, XVII Century

Featuring the seven-branch candelabra, double-headed eagle and crowns, the Shewbread, the Brazen Altar, the Ewer, Tables of the Law, also inscriptions, against a background of crimson cut velvet. (*Alexander*)

Height 8 feet 1 inch; width 52½ inches

Note: The late Vitall Benguiat stated that this hanging formerly hung in a synagogue at Rome, since demolished. Inscriptions on the hanging indicate that it commemorates one Jacob Ayazingo and his consort, Hindel (Henriette), daughter of the Leader and Ruler, and was the work of Jacob Capelli, son of the learned sage Judah Loeb.

From Vitall Benguiat, New York

[See illustration]

239. SILVER AND SILK EMBROIDERY COVERLET

Indo-Portuguese, Late XVII Century

The field worked with a cusped green leafy trellis enclosing formal carnation palmettes in old gold, crimson, rose, and green silks, enriched with silver threads; within three harmonizing borders. (L. I. Private Collector)

Length 10 feet; width 8 feet

240. CRIMSON SILK DAMASK HANGING

Italian, Early XVII Century

Allover design of floral sprays and jardinières, enclosed within a triple ribbon lattice looped with coronets. (Byron)

Length 6 feet 9 inches; width 6 feet 4 inches

241. TWO ANTIQUE VELVET COVERLETS AND A RUNNER

Genoese crimson coverlet with tasseled fringe, Lyons amber coverlet, and a *frappé* green and crimson runner of Gothic design, considerably worn. [Lot.] (Alexander)

242. SALMON PINK AND SILVER DAMASK AND BROCATELLE COVERLET

Spanish, XVII Century

The centre woven in silver with a close allover floral design in a salmon ground; border of yellow silk brocatelle patterned with a running floral scroll design in sky blue.

Length 10 feet; width 7 feet 2 inches

243. JAPANESE SILK AND GOLD EMBROIDERY HANGING

Beautifully embroidered with white phoenixes, and peonies with shaded brown leafage, on a ground of *bouclé* clouds above gold-tipped peaks; bordered with black satin and gold brocade. Together with a silk and gold embroidery dragon panel. [Lot.] (Fish)

*Height 8 feet 6 inches; width 6 feet 10 inches**Length 8 feet; width 23 inches*

244. PAIR OLD GOLD AND CRIMSON CISELÉ VELVET HANGINGS

Italian, XVII Century

With bold symmetrical design of leaf-scrolled strapwork entangled with blossoms, supporting spatulate floral clusters. Needs careful repair.

Length 9 feet 2 inches; width 47 inches

245. TWO LOUIS XIV IVORY AND WINE RED CISELÉ VELVET TABLE RUNNERS

Italian, XVII Century

Patterned on an ivory ground with a striking symmetrical design of peony blossoms and foliage entwined with diapered serpentine ribbon motives. [Lot.]

Length 8 feet 4 inches; widths 19½ and 26 inches

246. ROSE AND YELLOW SILK DAMASK COVERLET

Florentine, Early XVII Century

Allover design of spatulate floral clusters enclosed within a triple ribbon lattice looped with coronets.

Length 7 feet 1 inch; width 6 feet 8 inches



[NUMBER 247]

247. CUT AND BLOCKED VELVET HANGING BY
ANTONIO DARIAS OF VALENCIA

Dated 1746

COURT OF DIANA. The goddess of the hunt seated on a throne in a forest, with attendant maidens and hounds grouped about; in the sky is a chariot drawn by two horses. Composition is framed in an entablature festooned and hung with flowers, while in a cartouche below is the legend which, translated, reads: *Antonio Darias, inventor of this one and only Royal factory in Spain and in Europe, made this at Valencia in the year 1746.* Worn in places. (*Alexander*) *Height 12 feet 1 inch; length 14 feet 2 inches*

[See illustration]

- 3750 248. GOLD-EMBROIDERED RUBY VELVET TABLE COVER *Spanish, XVI Century*
Worked in gold thread, enriched with colored silks, with a panel of Renaissance scrollings of lilies with tendrils. *Length 54 inches; width 19 inches*
249. RÉGENCE IVORY SILK AND GOLD BROCADE DALMATIC
French or Italian, Early XVIII Century
Woven in gold and silver threads with opposed curving leafy stems enlivened with small pastel-colored flowers and berries.
250. CRIMSON SATIN DAMASK TABLE COVER *Spanish Baroque*
Woven with a bold design of garlands of leaf scrollings. Together with an armorial cushion to match. [Lot.] (Byron) *Length 6 feet; width 5 feet*
251. WINE RED CISELÉ VELVET CAPE *French, circa 1840*
Woven with cartouches enclosing floral nosegays springing from shell motives, in a symmetrical pattern. *Length 9 feet 6 inches; depth 48 inches*
252. GOLDEN YELLOW AND BLACK CISELÉ VELVET COVERLET
Spanish, Early XVIII Century
Design *ciselé* in black velvet, on a brilliant yellow ground, of floral nosegays enclosed within a bowknotted and diapered ribbon trellis; bow-knotted floral border. *Length 10 feet 6 inches; width 8 feet 2 inches*
253. PAIR FINE RUBY VELVET HANGINGS *Genoese, Early XVII Century*
Of richly patinated velvet in fine preservation; bordered with gold galloon; each two widths. *Length 11 feet 2 inches; width 43 inches*
254. PAIR GREEN SILK DAMASK AND JARDINIÈRE VELVET
WINDOW HANGINGS WITH VALANCE *Italian, XVII-XVIII Century*
Leaf green damask woven with large symmetrical palmette design garlanded with foliage; border and valance of jardinière velvet trimmed with fringe. *Length 9 feet 6 inches; width 54 inches*

PAINTINGS

255. VOLUME OF SEVENTEEN ORIGINAL WATERCOLOR DRAWINGS OF
FAMOUS RUGS OF THE YERKES COLLECTION
Fine watercolor reproductions of sixteenth century Persian rugs from the famous Charles T. Yerkes collection, all signed; bound in tooled green morocco. (N. Y. Private Collector)
256. HEAD OF THE VIRGIN *Spanish School, Early XVII Century*
Head of the Madonna slightly inclined framed by a golden yellow wimple and dark hood; radial halo. Carved frame. (Sanford)
Panel: 8¾ x 6½ inches

- 2750
257. VENETIAN CANAL SCENE *Martin Rico y Ortego, Spanish: 1833-1908*
Blue sky reflected in the water where gondolas are passing; at the left, white buildings with picturesque landing steps. Signed. (*Alexander*)
Watercolor: 14¼ x 21 inches
From the Goupil Galleries, New York
258. EARLY AUTUMN *Alexander H. Wyant, N.A., American: 1836-1892*
A bright sky screened at the right by trees in dark green and russet foliage; in the distance, a sunlit meadow; emerald green foreground bisected by a footpath. Signed. (*James*)
12¼ x 16 inches
Purchased from Mrs Wyant
From William Macbeth, Inc., New York, 1900
259. INTERIOR *Johannes Bosboom, Dutch: 1817-1891*
A vaulted interior with arched entrance through which a peasant girl is entering descending a flight of steps. Signed. (*James*)
Watercolor: 7 x 11 inches
From Boussod, Valadon & Co., New York, 1897
260. PANTHÈRE COUCHÉE PRÈS D'UN CHEVAL MORT: WATERCOLOR SKETCH
Ferdinand Victor Eugène Delacroix, French: 1798-1863
A panther lying next to a dying white horse in a wasteland before a rocky background. Signed. (*N. Y. Private Collector*)
Watercolor: 9 x 12 inches
Vente Delacroix, Paris, 1864, no. 489
Collection Larrieu, Paris
Recorded in Alfred Robaut, *L'Oeuvre Complet d' Eugène Delacroix*, 1885, p. 458, no. 1852
261. THOROUGHbred WITH JOCKEY UP
John Frederick Herring, sr, British: 1795-1865
A brown thoroughbred on a green track before rolling country, with jockey up in blue and white stripes. (*N. Y. Private Collector*) *17 x 21 inches*
262. GROOM TRAINING A RETRIEVER *Francis Sartorius, British: 1734-1804*
Rolling green landscape with a village at the right and a groom in brown coat training a black and white retriever. (*Thieriot*)
Height 14½ inches; length 17 inches
From M. Knoedler & Co., Inc., New York
263. LONDON PARCEL DELIVERY
Attributed to James Pollard, British: 1797-1859
Two-wheeled scarlet and blue cart drawn by a black horse through a London street. (*N. Y. Private Collector*) *10 x 14 inches*

264. BELZONI, FAMOUS HUNTER *G. Seabright, British: fl. 1850*
 A sorrel hunter in profile to the left standing before a view of open country.
 (N. Y. Private Collector) $28\frac{1}{2} \times 36\frac{1}{4}$ inches
265. CREEPER *Francis Sartorius, British: 1734-1804*
 A white saddle horse standing in profile to the left before a stable entrance,
 a black and white hound nearby; in the distance, a view of a landscape.
 Signed and dated 1780. (N. Y. Private Collector) 25×30 inches
266. FULL CRY *British School, XIX Century*
 Undulating country, a hound and a sorrel hunter taking a fence in the fore-
 ground; other huntsmen in pink coats appearing at the right. (N. Y.
 Private Collector) 34×43 inches
267. THE ROYAL COACH *Manuel Prieto, Spanish: fl. 1878*
 Navarrese courtyard with coachmen in Louis XVI livery harnessing the
 royal coach. Signed and dated 1878. (Kertscher) $22 \times 37\frac{3}{4}$ inches
268. CAPRI: THE EMBROIDERERS *Walter MacLaren, British: b. 1848*
 Picturesque group of peasant girls upon a terrace, three seated at an em-
 broidery frame, a standing figure at the right holding a nude infant. Green
 wooded hillside in the background. Signed and dated 1871. (Alexander)
 $21\frac{3}{4} \times 32\frac{3}{4}$ inches
 Collection of George Hayward
 Collection of the Metropolitan Museum of Art, New York, 1929
 Exhibited at the Metropolitan Museum of Art, New York, 1876, no. 640
269. MATINALE *Jean Aubert, French: 1824-1906*
 Full-length figure of a young girl in diaphanous gray gown and jade green
 scarf, descending steps into the foreground, leaving weeping cupids on the
 path behind her. Signed and dated 1893. (Alexander) $33\frac{1}{2} \times 21\frac{1}{2}$ inches
 From Boussod, Valadon & Cie., Paris
 Collection of George Crocker, New York, 1911
270. MARIE ANTOINETTE, AFTER VIGÉE-LEBRUN *James W. Champney, A.N.A., American: 1843-1903*
 Half-length figure of the Queen in sapphire blue velvet gown with high
 plumed headdress, holding a book in one hand, resting her arm on a red
 cushion. After the full-length portrait in the Musée Nationale, Versailles.
 (Alexander) *Pastel: 28 $\frac{1}{4}$ x 23 $\frac{3}{4}$ inches*



[NUMBER 271]

- 100- 271. PORTRAIT OF A GIRL *Gustave Jean Jacquet, French: 1846-1909*
Waist-length figure of a young girl in a black and fawn costume of seven-
teenth century style with white ruff and high-crowned black hat. Signed
and dated 1874. (*Alexander*) *Panel: 14½ x 12 inches*
From Boussod, Valadon & Cie., Paris

[See illustration]

- 150- 272. THE GREEK RUNNER LADAS *Frank Moss Bennett, British: fl. 1930*
The victorious Ladas in a yellow chlamys, falling dead before the judges at
Olympia. Signed. (*N. Y. Private Collector*)
Height 50 inches; width 40 inches

273. GIRL WITH FLOWERS

Charles Sprague Pearce, A.N.A., American: 1851-1914

Profile portrait of a dark-haired girl wearing a fur-trimmed garment and wine-red scarf, holding cornflowers and white daisies. Signed. (N. Y. Private Collector)
20 x 16½ inches

274. GIRL READING

Georges d'Espagnat, French: b. 1870

A young girl in rose dress and apron and brimmed straw hat, reading in the sunlight before a background of green foliage. Signed with initials. (Alexander)
24 x 18¼ inches

275. VENICE FROM THE MOLO

Jacopo Marieschi, Venetian: 1711-1791

View looking from the Molo with the Old Library at the right and the domes of the Salute in the left middle distance; figures strolling in the foreground. (Thieriot)
Height 26 inches; length 43 inches

276. PORTRAIT OF A GENTLEMAN

School of Jacopo Tintoretto, Venetian: XVI Century

Three-quarter length figure to half left in black doublet and narrow white collar, holding gloves in the left hand, the right hand resting on a crimson covered table. At the left an aperture disclosing a landscape. (N. Y. Private Collector)
43½ x 34¾ inches

277. PORTRAIT OF A HUMANIST

Flemish School, XVII Century

Half length figure in rose mantle, his left hand resting on a document, dissecting a hare on the table before him. (N. Y. Private Collector)
51½ x 38¼ inches

278. STILL LIFE: PAIR PAINTINGS

James Bogdani, Hungarian: d. 1724

A profusion of apples, pomegranates, grapes and a melon, one with a chicken and monkey intruding at either side; the other with a turkey, cocks and a pair of doves. Landscape backgrounds. (L. I. Private Collector)
33 x 47 inches

Collection of Consul-General Behrens

279. PORTRAIT OF A GENTLEMAN

Attributed to Sir Joshua Reynolds, P.R.A. British: 1723-1792

Waist-length figure to half right within a painted brown oval, wearing a green coat and waistcoat and powdered tiwig. (N. Y. Private Collector)
Height 30 inches; width 25 inches

- 180- 280. VICOMTESSE DE MONTILLET *School of Antoine Vestier, French: 1740-1824*
 Three-quarter-length figure of a young woman in a décolleté gray satin gown with rose sash, holding a wreath of wild flowers, a garland of roses and plumes dressing her hair. Landscape background. (*Alexander*)
Oval: 39 x 32 inches
- 35- 281. FOWL *Manner of Melchior d'Hondecoeter, Dutch: 1636-1695*
 Landscape with palace building and lake at the right; in the foreground, a peacock, turkey, rooster, and white chicken surrounded by smaller fowl. (*N. Y. Private Collector*)
28 x 52¼ inches
- 35- 282. MYSTIC MARRIAGE OF S. CATHERINE *Orazio Samacchini, Bolognese: 1532-1577*
 S. Catherine appearing at the left in rose brocaded mantle receiving the ring from the Savior Who is held upon the Virgin's knee. S. Joseph in saffron coat in the background at right. (*Kertscher*) *45½ x 36¼ inches*
- 50- 283. MADONNA AND CHILD *Follower of Dirk Bouts*
 Half-length seated figure of the Madonna in crimson mantle holding the nude Child resting his cheek against his mother's face. Landscape background with roses at the right. Carved tabernacle frame. (*Sanford*)
Cradled panel: 33½ x 25½ inches

ENGLISH AND AMERICAN FURNITURE
 AND DECORATIONS

- 170- 284. THREE ROCKINGHAM CHINA ANIMAL STATUETTES
 Pair of seated figures, and one couchant figure, of greyhounds, lightly tinted, on royal blue oval cushion bases. [Lot.] (*Thieriot*)
Heights 3½ and 6 inches
- 9- 285. STIEGEL-TYPE ENAMELED FLINT GLASS DRUG BOTTLE
 Square bottle enameled in red, blue, and yellow with female figure, flowers, and a legend. (*Alexander*)
Height 4¼ inches
- 220- 286. WORCESTER TEAPOT IN THE CHINESE STYLE *Circa 1760*
 Spherical teapot and cover painted in colors and India ink with Chinese domestic scenes in a white ground; lid repaired, slightly chipped. (*Ferguson*)
Height 6¼ inches
 Collection of Robert Hoe, New York, 1911
 Collection of Dr Pleasant Hunter, New York, 1913
- 75- 287. TWO PAIRS ROCKINGHAM CHINA ANIMAL STATUETTES
 Couchant figures of greyhounds tinted salmon pink, on oval bases glazed royal blue. (*Thieriot*)
Lengths 4¾ and 5½ inches

288. PAIR BRISTOL WHITE OVERLAY RUBY GLASS COVERED JARS *Circa 1850*
 Urn and cover reserved with a chain of ruby diamond motives in an opaque white overlay ground painted with bouquets of flowers. (*Rogers*)
Height 11 inches

289. SPODE APPLE GREEN AND GOLD ARMORIAL PLATE *Circa 1820*
 Centre decorated with a coat of arms; richly gilded and flower-painted border in an apple green ground. (*Ferguson*) *Diameter 10 inches*

290. PAIR CHELSEA CLARET, TURQUOISE AND GOLD VASES WITH COVERS *Circa 1765-70*
 Of squat baluster form, with flaring socle, octagonal foot, and two foliated loop handles; the domed cover with pointed finial. Centre encircled by a deep band of claret or raspberry color, enriched with a series of tiny circlets formed of gold dots; dividing the band is a fillet of gilded chain motive, while above and below are molded bands of conventionalized acanthus in turquoise, white and gold. Mark: gold anchor. (*Ferguson*)
Height 7 inches

From Stoner & Evans, Ltd., London

291. PAIR DUESBURY DERBY PLATES, PAINTED BY WILLIAM PEGG
 'THE QUAKER' *Circa 1800*
 Boldly painted in brilliant colors with poppies, anemones, marigolds, iris, campanula, corn flag, and potato blossom. Titled on back. One cracked. (*Ferguson*) *Diameter 8¾ inches*

One from the Baroness Burdett-Coutts Collection, London

One from the W. Bemrose Collection, Derby

Collection of Tom G. Cannon, New York, 1927

Illustrated in W. Bemrose, *Bow, Chelsea and Derby Porcelain*, pl. 10

292. BRASS INLAID BURL WALNUT TRAVELING CASE *English, XIX Century*
 With silver and glass fittings.

293. LATE GEORGIAN CUT GLASS CANDELABRUM *English, 1820-30*
 With sconces for two candles, hung with glass prisms all richly cut with chevron and *diamanté* ornament. (*N. Y. Private Collector*)
Height 15½ inches

294. INLAID AMBOYNA WOOD WORK BOX *English, XIX Century*
 Fitted as a cigar box. Together with a Late Georgian zebra-wood tea caddy.
 [Lot.]

295. THREE STAFFORDSHIRE FIGURINES

Large group of the Duke of Cambridge mounted on horseback; and figures of a rustic with a pot of petunias and his wife with a sheaf of wheat and pink apron. [Lot.] (*Thieriot*) *Heights 14 and 7½ inches*



[NUMBER 296]

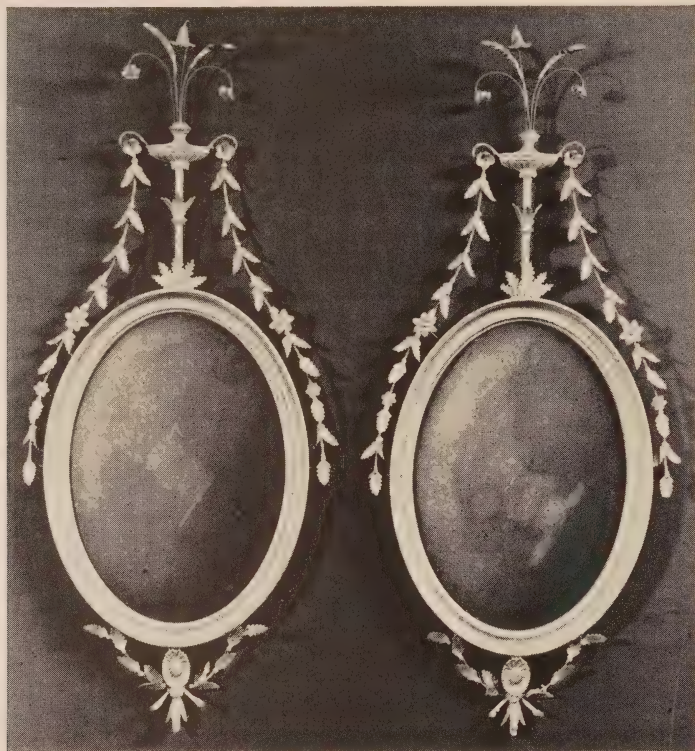
296. MINTON LAPIS BLUE PÂTE SUR PÂTE PORCELAIN TWO-HANDLED VASE
By L. SOLON *Dated 1888*

Cylindrical body with two S-scrolled and voluted serpent handles, glazed lapis blue with floral and strapwork ornament in pale blue, olive, and gold; decorated in white cameo relief with scenes depicting amors releasing nymphs in filmy draperies from rocks sculptured with owl, lyre, and statue of Athene. Signed L. SOLON, '88. (*Kertscher*) *Height 31 inches*

From A. B. Daniell & Sons, London

[See illustration]

297. THREE CUT AND MOLDED GLASS LUSTRE TABLE CANDELABRA
English, XIX Century
 Pair of cut glass three-light candlesticks with hexagonal baluster stem and hexafoil foot, hung with circles of lanceolate lustres; and a molded glass five-light candelabrum with octagonal baluster stem and four S-curved arms. [Lot.] (*Thieriot*) *Heights 20½ and 24½ inches*
298. TWO TERRESTRIAL GLOBES ON MAHOGANY STANDS *English, 1830-40*
 Twelve-inch globes made by Ferguson and Cary of London; supported on turned mahogany legs with stretchers. *Height 18 inches*
299. OLD ENGLISH PAPIER MÂCHÉ TEA TRAY AND A TAPESTRY FOOTSTOOL
 Tea tray gold-stenciled; oval gilded footstool in Louis XVI style. Tray imperfect. [Lot.]
300. REGENCY MAHOGANY SHAVING MIRROR *English, circa 1810*
 Comprising arched oblong swivel mirror on grooved uprights, surmounting oblong base with three drawers. *Height 24 inches; width 16½ inches*
301. EARLY VICTORIAN CARVED WALNUT STOOL *English, circa 1840*
 In the French taste, with molded cabriole legs terminating in scrolled feet; top upholstered. *Width 18 inches*
302. GEORGIAN PIERCED BRASS FENDER
 Handsome example, pierced and molded with conventional ornament; on four ribbed feet. *Length 45 inches*
303. SHERATON MAHOGANY FOLDING CORNER WASHSTAND
English, XVIII Century
 On triangular form with curved front, fitted with cupboard and drawer; top slotted to hold basin, etc., and closes forming a corner console. *Height 32½ inches; width 25½ inches*
304. SHERATON INLAID MAHOGANY PEMBROKE TABLE *English, 1820-30*
 Rectangular top with rounded corners, two hinged leaves, bordered with a band of East Indian satinwood; on round tapered and inlaid legs; one drawer. *Height 28 inches; length open 38¾ inches*



[NUMBER 305]

305. PAIR FINE ADAM GILDED GESSO MIRRORS WITH FESTOONS

English, XVIII Century

440- Oval nulled frame surmounted by a stilted urn of flowers and wheat ears hung with festoons of gilded gesso blossoms and leaves strung on wires, a garland at the base.

Height 44 inches; width 19 inches

[See illustration]

306. SET OF SIX LATE GEORGIAN CARVED MAHOGANY SIDE CHAIRS

English, circa 1825

150- Empire model with conforming open square back, having cable-twisted splat; upholstered seat, turned and tapered legs.

- 72 ✓ 307. REGENCY MAHOGANY TILTING BREAKFAST TABLE *English, circa 1810*
Tilting oblong top with grooved edge supported on tapered round pedestal and four grooved splayed legs with brass shoes.
Height 28½ inches; length 52 inches
- 2 ✓ 308. CHIPPENDALE CARVED MAHOGANY WALL MIRROR
English, XVIII Century
Fret-carved pediment and base; embellished with a gilded shell medallion on the crest.
Height 34½ inches; width 21 inches
- 0 - 309. LATE GEORGIAN INLAID OYSTER WALNUT GAMING AND WORK TABLE
English, circa 1830
Hinged and folding top veneered and inlaid with cribbage and chess boards, a drawer and a sewing reticule below.
Height 29 inches; width 24½ inches
- ✓ 310. CARVED WALNUT TWO-CHAIR-BACK SETTEE *Queen Anne Style*
With carved solid splats, voluted arms, shell-carved cabriole legs with claw and ball feet; slip seat in red velours. (*Sheridan*) *Length 5 feet 1 inch*
- 40 - 311. GEORGIAN BRASS-MOUNTED MAHOGANY TWO-TIER DUMBWAITER
Composed of two circular shelves with molded edge; supported on brass columns and splayed tripod with brass paw feet.
Height 30½ inches; diameter 24 inches
- 35 - 312. NEST OF FOUR MAHOGANY OCCASIONAL TABLES *Sheraton Style*
Four square small oblong tables fitted one within the other; on slender trestle-patterned legs.
Height 25¾ inches; width 20 inches
- 70 - 313. GEORGE III MAHOGANY SLANT-FRONT DESK *English, XVIII Century*
Body contains three long drawers, above which a hinged slant flap encloses small drawers and pigeonholes embellished with light wood inlay.
Height 40½ inches; width 37 inches
- 20 - 314. SET OF FOUR CHIPPENDALE CARVED MAHOGANY SIDE CHAIRS
English, Early XIX Century
Open back with acanthus-carved bow-shaped top rail surmounting a strap-work pierced 'Gothic' splat; slip seat in crimson silk damask, leaf-carved cabriole legs with small ball and claw feet.
- 65 - 315. GEORGIAN MAHOGANY PEMBROKE TABLE *English, Early XIX Century*
Oblong top with two drop leaves, single end drawer, on lozenge-form stilted legs with saltire stretcher.
Height 27½ inches; length open 32½ inches



[NUMBER 316]

316. UPHOLSTERED WALNUT LOVE SEAT IN AUBUSSON TAPESTRY

Queen Anne Style

85- The upholstered back, seat, and arms in silk-woven Aubusson tapestry, showing a fine design of blossoms and leaves centring a vignette, in reds, blues, greens, and yellows in a *tête de nègre* field; light walnut cabriole legs. (Sheridan) *Length 48 inches*

[See illustration]

317. SHERATON INLAID MAHOGANY CARD TABLE *English, XVIII Century*

55- Hinged and folding circular top lined with green baize and banded with tulipwood; on four square tapered legs.

Height 27¾ inches; length 36 inches

318. SHERATON INLAID MAHOGANY CARD TABLE *English, XVIII Century*

55- Somewhat similar to the preceding, with green baize-covered top; square tapered legs with spade feet. *Height 27½ inches; length 36 inches*



[NUMBER 319]

319. GEORGIAN MAHOGANY PEDESTAL DESK

In three parts, the top lined with tooled dark leather; contains three drawers in either pedestal and three drawers in the frieze, with brass ring handles.

Height 30½ inches; length 53½ inches

[See illustration]

320. SHERATON SATINWOOD AND GREEN LEATHER OCTAGONAL DRUM TABLE

Top lined with tooled and gilt green leather, four drawers around the frieze; slender columnar support and splayed tripod with brass shoes.

Height 30 inches; width 24¼ inches

321. PAIR CARVED WALNUT AND CANE SIDE CHAIRS

William and Mary Style

With caned high back and seat and crimson damask seat cushion. (*Crocker*)

322. PAIR LATE GEORGIAN ROSEWOOD ARMCHAIRS

English, circa 1820

Empire chair with rectangular back, fluted arms and flaring legs; seat and back with striped satin cushion.



[NUMBER 323]

323. CHIPPENDALE MAHOGANY DWARF CABINET ON STAND

English, XVIII Century

150 - Upper section with dentiled and fret-carved cornice and two paneled cupboards opening to a nest of small drawers; the lower section with three cockbeaded long drawers having rocco brass bail handles and escutcheons; bracket feet.

Height 43 inches; width 30 inches

From Charles of London

[See illustration]

324. QUEEN ANNE CARVED MAHOGANY SIDE TABLE WITH PAW FEET
Philadelphia, XVIII Century
 Oblong top with beveled edge, valanced frieze with carved shell at either side, molded cabriole legs terminating in paw feet. (Sheridan)
Height 30 inches; length 40 inches
 Collection of Dr Crim, Baltimore, Md.
325. REGENCY BLACK AND GOLD LACQUER COUCH IN GREEN VELOURS
English, XIX Century
 So-called Grecian couch, the black frame and supports piped with gilding, upholstered and covered in moss green velours. (Sheridan)
Length 6 feet 6 inches
326. INLAID WALNUT SMALL WRITING TABLE *William and Mary Style*
 Shaped top with drawer, on spiraled legs with shaped stretchers. (Crocker)
Height 29 $\frac{1}{4}$ inches; length 33 inches
327. QUEEN ANNE CARVED WALNUT AND NEEDLEPOINT STOOL
 Oblong slip top in floral needlepoint with pink ground, shell-carved cabriole legs with paw feet.
Width 22 inches
328. ADAM CARVED AND PAINTED SEMICIRCULAR PIER TABLE WITH
 DECORATED MARBLE TOP *English, XVIII Century*
 Top composed of a slab of white marble, painted in the style of Pergolesi, with a wide band of honeysuckle ornament in a yellow ground, framing a demi-medallion simulating a fan or patera, fluted frieze and square tapered legs. Painted blue and gold. (Sheridan)
Height 36 inches; length 52 $\frac{3}{4}$ inches
 From Stuart & Turner, London
329. SET OF SIX CHIPPENDALE CARVED MAHOGANY CLAW-AND-BALL-FOOT
 SIDE CHAIRS
 Molded serpentine top rail supported on pierced strapwork beaker splat of Gothic type, bold tapering cabriole legs with claw and ball feet. Slip seats in old gold floral brocade, one differing.
330. GEORGE III MAHOGANY TRIPOD TABLE *English, XVIII Century*
 Tilting circular top covered with tooled brown leather; on turned pillar and cabriole tripod.
Height 28 $\frac{1}{2}$ inches; diameter 30 inches



[NUMBER 331]



[NUMBER 332]

331. QUEEN ANNE CARVED MAHOGANY SIDE CHAIR WITH CLAW AND BALL FEET *Philadelphia, XVIII Century*

65- Slightly conforming tall back with solid vasiform splat and yoke-curved crest rail, saddle-shaped slip seat with valanced deep frame; cabriole front legs carved on the knees with flowers and acanthus and terminating in finely undercut claw and ball feet. (*Sheridan*)

Collection of Dr Crim, Baltimore, Md.

[See illustration]

332. QUEEN ANNE MAHOGANY ROUNDABOUT CHAIR WITH DUTCH FEET *Philadelphia, XVIII Century*

90- Generously proportioned chair with broad flat horseshoe-patterned arms capping three columnar uprights and two solid splats; leather upholstered square seat with valanced deep frame; three round tapered legs and one cabriole leg, all terminating in club-shaped feet. (*Sheridan*)

[See illustration]

333. INLAID MAHOGANY BREAK-FRONT BOOKCASE *Georgian Style*

In three parts, enclosed by four glazed doors, below which are drawers and cupboards; front, banded with light wood inlay, has fretted scroll pediment. (*Sheridan*)
Height 7 feet 3 inches; width 5 feet 6 inches

334. NEST OF FOUR LACQUERED AND DECORATED OCCASIONAL TABLES

Small oblong tables fitted one within the other; on lyre-shaped supports, simulating Chinese lacquer. (*N. Y. Private Collector*)

Height 27¼ inches; width 19¾ inches

335. MAPLE SLANT-FRONT DESK

American, XVIII Century

With slant top opening to fitted interior, surmounting four graduated long drawers with bat's-wing brasses; bracket base. (*Thieriot*)

Height 39½ inches; width 33½ inches

336. PAIR GEORGIAN MAHOGANY CONSOLE TABLES *English, XVIII Century*

Oblong top with rounded front corners; on molded square legs.

Height 28 inches; length 32¾ inches

337. PAIR CHIPPENDALE CARVED MAHOGANY SIDE CHAIRS

English, Early XIX Century

Open back with scrolled strapwork splat carved with acanthus and rosettes; slip seat in crimson silk damask, seat rail carved with rosette and acanthus and finished with a gadroon molding, on paw-foot cabriole legs carved with shells.

338. CARVED MAHOGANY SMALL CENTRE TABLE *Chippendale Style*

Oblong tray top, on *ajouré* frieze of interlaced strapwork and triangular legs carved with fret ornament, with pierced brackets. (*Thieriot*)

Height 28½ inches; width 24 inches

339. GEORGIAN CARVED WALNUT DROP-LEAF BREAKFAST TABLE

Oval top with two drop leaves, on four cabriole legs carved with ribbon bowknots upon the knees and ending in bold claw and ball feet, two rotating as supports.

Height 30 inches; length open 5 feet 5 inches

340. SHERATON MAHOGANY TWO-PEDESTAL DINING TABLE

English, circa 1800

240- Composed of two rectangular sections, each supported on a turned pedestal springing from four splayed legs with brass paw feet. Top has grooved edge and is joined together by inserting a loose leaf at centre.

Height 29½ inches; width 46 inches; length extended 5 feet 10 inches

[See illustration]



[NUMBER 341]

341. SET OF SIX LATE GEORGIAN BRASS-INLAID ROSEWOOD SIDE CHAIRS

English, 1820-30

250- In the Late Empire style, the back decorated with brass inlay; slip seat, tapered flaring supports.

[See illustration of two]

342. SET OF SIX LATE GEORGIAN BRASS-INLAID ROSEWOOD SIDE CHAIRS

English, 1820-30

150- Similar to the preceding.



[NUMBER 340]

343. CARVED MAHOGANY KNEEHOLE DESK *Chippendale Style*
 Oblong top with three paneled frieze drawers furnished with bail handles,
 above two side cupboards flanking a recessed kneehole cupboard; molded
 bracket base. *Height 33 inches; length 53 inches*

344. SHERATON DECORATED SATINWOOD PEMBROKE TABLE *English, circa 1810*
 Oblong top with two hinged leaves, one drawer; square tapered legs.
 Handsomely painted with bouquets, swags of flowers and leaves, and a
 medallion of musical trophies. *Height 28½ inches; length open 40 inches*

345. WILLIAM AND MARY INLAID OYSTER WALNUT CABINET ON STAND
English, Late XVII Century

Upper section with a torus frieze containing a long drawer, surmounting
 double cupboards opening to a nest of variously sized drawers with brass
 bifid drop handles; on stand with long drawer and five spirally turned legs
 joined by enclosed stretcher; bun feet. The whole beautifully paneled with
 walnut oyster pieces, picked out upon the cupboard doors with interlaced
 arcs of stringing. (*N. Y. Private Collector*)

Height 58½ inches; width 36 inches

From Lenygon & Morant, Ltd., London

Collection of Howard Gould, Parke-Bernet Galleries, Inc., 1940

[See illustration]

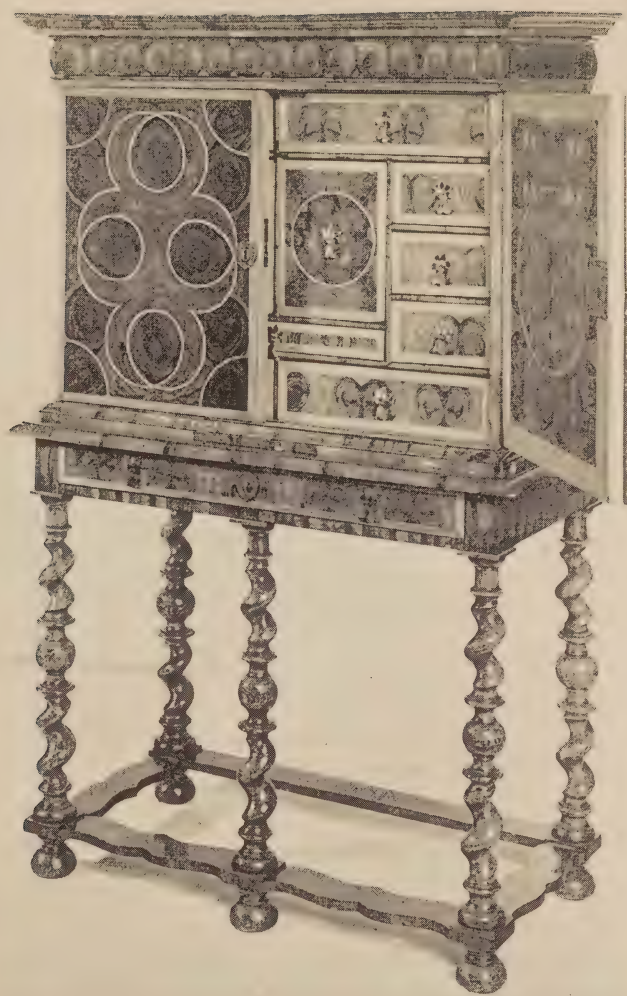
346. CARVED AND GILDED WALL MIRROR *Chippendale Style*
 Of rocaille cartouche form, carved with stalactites, leaf scrolls, and shells.
 (*Alexander*) *Height 5 feet; width 31 inches*

348. INLAID WALNUT SIDE TABLE *Queen Anne Style*
 Molded oblong top; carved cabriole legs with scrolled feet. (*Sheridan*)
Height 31½ inches; length 42 inches

349. GEORGE III MAHOGANY TWO-PART DINING TABLE
English, XVIII Century
 Consisting of two half round sections, each supported on five square tapered
 legs and joined together by inserting two loose leaves. (*Sheridan*)
Height 29 inches; width 44½ inches; length extended 7 feet 6 inches

350. REGENCY MAHOGANY BOW-FRONT SERVING TABLE *English, circa 1810*
 A miniature sideboard with one long and two small drawers, curved front,
 and square tapered legs with spade feet.

Height 30 inches; length 35¾ inches



[NUMBER 345]

- 70- 351. PHYFE MAHOGANY SIDEBOARD *New York, N. Y., circa 1815*
 Commodious piece, the shaped front fitted with drawers and cupboards,
 cutlery drawers on top at either end; supported on eight reeded round
 tapered legs, six of which have carved paw feet. (*N. Y. Private Collector*)
Height 53 inches; length 6 feet

[See illustration]

- 135- 352. SHERATON INLAID MAHOGANY SLANT-FRONT WRITING DESK
English, Late XVIII Century
 The hinged flap and the front is banded with satinwood and other woods,
 interior fitted with small drawers and pigeonholes enclosed by a hinged
 slant flap; two long drawers in front, square tapered legs.
Height 44 inches; width 33 inches

- 170- 353. REGENCY MAHOGANY SOFA TABLE *English, circa 1815*
 Oblong top with drop-end leaves, on trestle-pattern end supports braced by
 a turned medial stretcher and having brass shoes; two drawers.
Height 29½ inches; length open 53 inches

- 100- 354. LATE GEORGIAN CARVED MAHOGANY BOOKCASE WITH
 SECRETARY DRAWER *English, 1820-30*
 The upper part contains shelves enclosed by a pair of glazed doors with
 arched mullions; the lower part contains a cupboard in either pedestal and
 three drawers at the centre. The middle drawer fitted for writing purposes.
Height 7 feet 7½ inches; width 53¾ inches

- 50- 355. GEORGE III MAHOGANY OVAL BREAKFAST TABLE
English, XVIII Century
 Hinged top with drop leaf, supported on four square tapered legs. Forms
 a console when closed. (*Sheridan*) *Height 29¼ inches; length 48 inches*

- 55- 356. GEORGIAN MAHOGANY ROUNDABOUT CHAIR *English, XVIII Century*
 Horseshoe-shaped arms, solid splats, and square legs with stretchers; seat
 in red leather. (*Sheridan*)



[NUMBER 351]

- 160- 357. PAIR BURL WALNUT CABINETS *William and Mary Style*
 Upper part with shelves for books or china, enclosed by a pair of arched glazed doors with ornamental hinges; lower part with two drawers, carved scrolled legs and ogee-carved flat stretchers.

Height 5 feet 7½ inches; length 36 inches

[See illustration of one]

- 90- 358. EARLY GEORGIAN MAHOGANY DROP-LEAF TABLE *English, XVIII Century*
 Oval top with two hinged leaves, on four round tapered legs with club feet. (Sheridan) *Height 28½ inches; length open 50 inches*

- 85- 359. PAIR CARVED AND PARCEL-GILDED WALNUT TORCHÈRES WITH LUSTRE CANDELABRA *Georgian Style*
 Baluster column with *ajouré* clustered brackets, parcel-gilded and polychromed; fitted with *bronze doré* tripod lustre candelabrum with three electric lights. (Rogers) *Height 7 feet*

- 30- 360. INLAID MAHOGANY DRESSING OR WRITING TABLE *Hepplewhite Style*
 Oblong top lined with tooled leather; shaped front fitted with three drawers; square tapered legs. Top and front banded with light sycamore. *Height 30 inches; length 39 inches*

- 65- 361. PAIR REGENCY CARVED, LAQUÉ AND PARCEL-GILDED SETTEES IN CRIMSON CUT VELVET
 Arched back with shell creasing and rosette end terminals, closed leaf-carved arms, beaded rails with tapering legs; finished gray and gold. Covered in crimson cut velvet; with two footstools. [Lot.] (King) *Length 5 feet 7 inches*



[NUMBER 357]

362. RICHLY CARVED AND PANELED OAK COURT CUPBOARD

Welsh, dated 1744

Sometimes called a standing or press cupboard and evidencing an eighteenth century repetition of a Jacobean design commonly found in the outlying country districts in England and Wales. In two stages, with slightly overhanging cornice and enclosed by five doors richly carved with the Tudor rose, etc., the cornice frieze carved with the initials I G E and date. Rich dark, almost black, patina. (*Sheridan*)

Height 5 feet 4½ inches; width 55½ inches

363. MAHOGANY TESTER BEDSTEAD

Sheraton Style

Four slender posts with turned finials, supporting domed tester with ecru damask hangings; box-spring and mattress. (*Conner*)

Height 6 feet 3 inches; width 39 inches

364. CARVED MAHOGANY TALL-CASE CHIMING CLOCK

Chippendale Style

Arched hood with festooned and scrolled pediment, ormolu-mounted dial; case carved with scrolled panels enclosing bowknotted floral pendants. (*Rogers*)

Height 8 feet 8 inches; width 23 inches

365. SHERATON MAHOGANY SERVING TABLE

Serpentine front with two drawers, square tapered legs with spade feet and plain stretchers.

Height 34 inches; length 42 inches

366. GEORGIAN BRASS AND STEEL FENDER

Pierced with a band of conventional honeysuckle ornament; on lion paw feet. (*N. Y. Private Collector*)

Length 47 inches

TAPESTRIES

367. TWO BRUSSELS TAPESTRY BORDER FRAGMENTS

Circa 1600

Woven with allegorical figures, flowers, etc. and mounted as table scarfs. (*Alexander*)

Lengths 7 feet 1 inch and 7 feet 9 inches

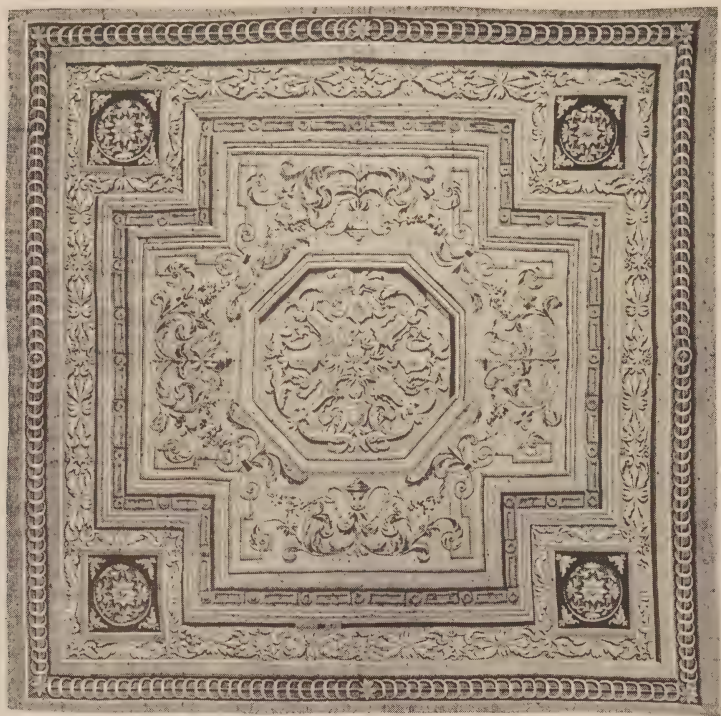


[NUMBER 368]

368. LOUIS XV BEAUVAIS TAPESTRY PICTURE *XVIII Century*
 FLORA. A rustic girl in rose pink and white dress holding a rose; woven partly in silk. Carved and gilded frame. (*Alexander*)

[See illustration]

369. FELLETIN TAPESTRY PANEL *XVIII Century*
 Woven with a tall flowered shrub in the foreground and view of a *château* in the left middle distance. *Height 6 feet 8 inches; width 44 inches*



[NUMBER 370]

370. RARE GOBELINS SILK-WOVEN TABLE TAPESTRY *Late XVII Century*
Representing a geometric and floral design in the manner of Bérain, composed of an octagon filled with urns and foliage volutes framed in a symmetrical arrangement of flower swags, and leaf *rinceaux* and urns, the whole contained in a compartmented border with square medallions enclosing paterae at the corners. Woven in reds, blues, and yellows. (*Alexander*)

Length 7 feet 1 inch; width 6 feet 9 inches

[See illustration]

371. FLEMISH TAPESTRY PANEL *Late XVII Century*
View of a river bank overgrown with trees and shrubbery, with two fowl in the foreground; a galley, sailboat, and other craft are moored in the stream, and in the sunlit distance appear the buildings of a town. Border similar to the preceding. *Height 8 feet; width 5 feet 8 inches*
372. FLEMISH TAPESTRY PANEL *Late XVII Century*
Vista of woodland with tall trees at left and right and two herons amid the foreground shrubbery; the scene is divided by a picket fence crossing the left distance, before which are seen huntsmen and beaters pursuing game. Powder blue border of scalloped strapwork supporting tulips. *Height 8 feet; width 5 feet 8 inches*
373. FLEMISH GRISAILLE TAPESTRY *XVII Century*
CROESUS BEFORE CYRUS. At centre the monarch in short tunic and cloak, crowned and bearing sceptre and surrounded by councillors and priests; his hand is extended toward the bearded Croesus, kneeling before him at right; background of wooded country with castles. Dark blue border on three sides woven with Renaissance cornucopia scrolls and blossoms, peacocks and smaller fowl, and animals, and two medallion vignettes of heroes. Woven *en camaïeu* in shades of blue. Small repairs. (*N. Y. Private Collector*)
Height 9 feet 5 inches; width 9 feet 2 inches
374. AUBUSSON TAPESTRY
Depicting a youth on a ladder in the branches of a cherry tree, throwing fruit down to a maiden, who fills the panniers of a donkey; floral border with spiral ribbon motive. (*N. Y. Private Collector*)
Height 6 feet 7 inches; width 6 feet 5 inches
375. AUBUSSON VERDURE TAPESTRY
View of the park of a *château* with an ornamental lake, with flowering plants and two tall trees in the foreground; tan foliage border. (*N. Y. Private Collector*)
Height 6 feet 9 inches; width 6 feet 6 inches
376. FLEMISH VERDURE TAPESTRY WALL COVERING FOR A SMALL ROOM *Early XVIII Century*
Cut to fit the four walls from ceiling to wainscot of a small oblong chamber, having two door and two window openings. [Lot.] (*Alexander*)

ORIENTAL RUGS

377. THREE CHINESE MATS *XVIII Century*
Woven with various peony and fret medallion designs in grounds of old gold and tan. Two repaired. [Lot.] (*N. Y. Private Collector*)

378. CHINESE RUG

K'ang-hsi

10- Deep sapphire blue ground with scattered sprigs of flowers and butterflies centring a *kylin* medallion; rose beige peony border. (*N. Y. Private Collector*)
Length 4 feet 1 inch; width 2 feet 2 inches



[NUMBER 379]

379. OUSHAK RUG

Late XVII Century

100- Brilliant mazarine blue ground woven with a formalized pattern of fringed leaf arabesques in scarlet, green and old gold, within a scarlet trellis border enclosing cruciform motives. Some repairs.

Length 6 feet; width 4 feet 5 inches

[See illustration]

380. SAROUK RUG

Cartouche-shaped tan field with rose spandrels, pendent mazarine blue and green diamond medallion, all patterned with floral vines; fluctuating brown and blue lotus border. *Length 7 feet; width 4 feet 2 inches*

381. KASHAN RUG

Woven with an elaborate design of floral arabesques and grapes in color in a bone white ground, beneath a scrolled arch with red spandrels; midnight blue border of flowers and clusters of grapes in harmony with the field.

Length 6 feet 8 inches; width 4 feet 7 inches

382. PERSIAN MEDALLION RUG

Woven with a pendent rose floral medallion in a cartouche-shaped *tête de nègre* field spread with floral vines, with rose spandrels; *tête de nègre* lotus border. Small repair. *Length 6 feet 1 inch; width 4 feet 5 inches*

383. DAGHESTAN KAZAK BIRD RUG

Tête de nègre field woven with four large eight-pointed medallions in scarlet, blue, and white, enclosed by pairs of bird figures amid scattered nomad motives; ivory border of latchhooked dies.

Length 9 feet 9 inches; width 3 feet 10 inches

384. SHIRAZ RUG

Woven with concentric blue, white, and tawny red cartouche-shaped floral medallions in a mazarine blue ground; blue border of palmettes and formalized jardinières. *Length 9 feet; width 5 feet 2 inches*

385. CHINESE RUG

Ivory field scattered with floral sprigs and groups of flower vases, a similar design repeated in the sapphire blue border, which has a lighter blue outer guard. *Length 9 feet 8 inches; width 8 feet 2 inches*

386. CHARLES X AUBUSSON CARPET

Circa 1825

Centred with a garlanded late Empire floral medallion surrounded by scattered trophies of musical instruments, in a circular golden yellow field framed by a second garland of gaily colored blossoms; the spandrels in sage green, patterned with a rosetted tile design. Repaired.

Length 9 feet 2 inches; width 8 feet 4 inches

387. KABISTAN RUG

Midnight blue field woven with a pole of four latchhooked diamond medallions amid tiny scattered nomad motives; at either end bands of rose, patterned with quaint human and animal figures; reciprocal arrowhead border. Dated 1293 A.H. *Length 11 feet 3 inches; width 4 feet*

388. KASHAN RUNNER

Woven with a symmetrical design of curving stems of lotus and peony palmettes in reds, blues, browns, and ivory in a midnight blue ground.

Length 13 feet 7 inches; width 3 feet 5 inches

389. AFGHAN BOKHARA RUG

Rose red field with a dark *abrash* of purplish red at one end and woven with three chains of large particolored octagon motives, within a diamond-pattern border.

Length 10 feet 5 inches; width 8 feet 4 inches

390. VIENNA 'SAVONNERIE' CARPET

Ivory field woven allover with sprigs of pink and pale green blossoms within a rococo floral framework woven in pastel colors and edged with rose. Loose thick pile.

Length 14 feet 6 inches; width 14 feet

391. CHINESE DRAGON CARPET

Tête de nègre field centred with a medallion of butterflies and buff peonies, with four dragons at the corners supported on trailing floral vines; old gold border of Buddhist emblems and fans, in colors of the field.

Length 16 feet 7 inches; width 13 feet 2 inches

392. BULGARIAN CARPET

Plain carpet of ivory woven *en camaïeu* with a garlanded oval blank medallion and a frame of blossoms and leaf scrollings.

Length 19 feet 5 inches; width 12 feet

393. KURDISTAN RUNNER

Woven on a midnight blue ground with a golden trellis of peony rosettes and small leaf palmettes in colors, within a latticed border.

Length 20 feet; width 3 feet 2 inches

394. KAZAK RUG

Rich green field woven with large and small square plaquettes variously patterned with rosettes and latchhooked motives in bright colors; old gold border of serrated vines.

Length 7 feet 7 inches; width 4 feet 10 inches

395. PERSIAN HERATI RUNNER

Woven with the allover trellised Herati pattern in a deep blue ground; narrow scarlet and ivory borders.

Length 12 feet; width 2 feet 9 inches

FRENCH AND ITALIAN FURNITURE AND DECORATIONS

396. VIENNESE CARVED ROCK CRYSTAL, SILVER AND ENAMEL FLACON
Elaborately carved with conventional ornament and enriched with colored enamels; probably early eighteenth century. Together with three sterling silver spoons and a fruit knife in a case. [Lot.] (*Alexander*)
397. FOUR DECORATIVE MINIATURES
One of a lady in Empire costume, two of French noblemen in one frame, one of an Eastern princess. [Lot.] (*Alexander*)
398. CHISELED BRONZE ALTAR BELL *Spanish, XVII-XVIII Century*
Used in the celebration of the Mass, and chiseled with a figure of a pope and other ecclesiastical motives. (*Alexander*) *Height 5 inches*
399. RICHLY CARVED IVORY DAGGER *German Renaissance*
The handle and sheath of red velvet and ivory richly carved with a coat of arms and Renaissance ornament, the hilt inscribed: STPH. VATORY MDLXXX. (*Alexander*) *Length 20 $\frac{3}{4}$ inches*
400. EMPIRE GILDED BRONZE LAMP OR CENSER *French, Early XIX Century*
In the Roman style, consisting of a fluted shaft on oval plinth, from which is suspended a cut glass coupe to hold a floating light or incense. (*Alexander*) *Height 12 $\frac{3}{4}$ inches*
401. EMPIRE BRONZE DORÉ INKSTAND *French, Early XIX Century*
In the form of a classic tripod urn, embellished with amor caryatids, the circular base contains the ink and pounce pots. (*Alexander*) *Height 7 $\frac{1}{2}$ inches*
402. PARCEL-GILDED BRONZE STATUETTE *Italian, XVIII Century*
Michelangesque gilded reclining figure of a bearded saint covering his head with a cloak, on a rocky base; oblong black Belgian marble plinth. *Length 15 $\frac{1}{2}$ inches*
403. BRONZE DORÉ AND CUT GLASS EPERGNE *Empire Style*
Formed of two nymphs supporting a basket with cut glass bowl, on plinth ornamented with a Bacchanalian procession and fitted with six leaf-scrolled arms with smaller dishes. Convertible to a taller candelabrum. (*Kertscher*) *Height 21 inches*

404. SECOND EMPIRE BRONZE AND BRONZE DORÉ CLOCK

French, XIX Century

30- Composed of an oblong plinth, which contains the movement, surmounted by a group depicting Napoleon wounded in the foot.

Height 24 inches; width 17 inches

405. BRONZE BUST OF EMPEROR NAPOLEON I

R. Colombo, Italian: XIX Century

37⁵⁰ Depicting the Emperor in military coat and cocked hat, an Imperial eagle at the base. Signed and dated 1885 and with the stamp of the *fondeurs*; surmounting shaped plinth of *griotte* marble. *Height of plinth 26½ inches*

406. TWO CHINESE DECORATIVE VASE-LAMPS

15- Red *flambé* porcelain pear-shaped vase of the Ch'ien-lung period; and a Han green glazed pottery jar, with shade. Fitted for electricity. [Lot.] (*Thieriot*)

Heights 27 and 29 inches

407. PAIR MAMMOTH DRESDEN PORCELAIN CEREMONIAL EWERS

'SUMMER' AND 'WINTER'

140- Modeled in high relief with landscapes, one with a hunting scene, the figures of hounds and bear emerging into full and undercut relief, and figures of Pan and Diana perched on the shoulders with Cupid at the foot; scrolled wheat-sheaf handle with a second amor. The companion vase also exhibits a hunting scene with burning woodland, figures of Vulcan with bellows and a youth with a torch, and a fiery dragon handle bestridden by an amor. Small imperfections.

Heights 26 and 26½ inches

408. ACAJOU TABLE, MOUNTED IN BRONZE DORÉ

Directoire Style

35- Bronze-galleried oblong top, one drawer, square tapered legs. (*Sheridan*)

Height 29 inches; width 26¼ inches

409. PAIR CARVED AND GILDED STOOLS

Louis XVI Style

40- Oblong small bench with X-shaped supports, covered in brocade matching the preceding banquettes. (*Alexander*)

Length 27 inches

410. PAIR CARVED AND GILDED STOOLS

Louis XVI Style

40- *En suite* with the preceding. (*Alexander*)

411. DIRECTOIRE ACAJOU BOOK TABLE

French, circa 1800

55- Oblong top inset with Belgian black marble; open front with small side drawer; plain round tapering legs. *Height 29 inches; width 15 inches*



[NUMBER 412]

[NUMBER 413]

CHINESE JADE COUPE: NUMBER 37

412. LOUIS XVI CARVED WALNUT AND OYSTER WHITE

SILK DAMASK FAUTEUIL

French, XVIII Century

Arched and molded back with carved leaf cresting, open fluted arms with armpads, round fluted and tapering legs; back, armpads, and loose seat cushion in oyster white silk damask.

[See illustration]

413. LOUIS XVI ACAJOU AND TULIPWOOD TABLE DE CHEVET

French, XVIII Century

Oblong rimmed top of gray S. Anne marble, front with small drawer surmounting double cupboards; square tapering legs. Inlaid with striped panels of tulipwood.

Height 29 inches; width 19½ inches

[See illustration]

414. LOUIS XV CARVED AND GILDED FOUR-FOLD SCREEN IN AUBUSSON SILK TAPESTRY *French, XIX Century*
 Arched folds crested with carved and gilded rococo foliage and inset with panels of fine silk tapestry, exquisitely woven with garlanded cartouches with vignettes exhibiting the *Medallions d'Enfants*, after Boucher, with smaller pendent medallions of putti *en camaïeu*, in an écru ground bordered in *rose Pompadour*. (N. Y. Private Collector)
 Height 6 feet 4 inches; length 8 feet 9 inches
415. LOUIS XV DECORATED GREEN LAC ENCOIGNURE *Venetian, XVIII Century*
 Corner cabinet of segmental form, the door painted *en camaïeu* with a female figure symbolizing Astronomy, after Pillement, in a green ground. (Sheridan)
 Height 35½ inches; width 26½ inches
416. CARVED BEECHWOOD CHAISE LONGUE IN BLUE MOIRÉ *Louis XV Style*
 With tub-shaped head panel and loose cushion covered in pale blue moiré. (Crocker)
 Length 5 feet 6 inches
417. INLAID ACAJOU VITRINE TABLE, MOUNTED IN BRONZE DORÉ *Louis XV Style*
 Oval hinged glazed top lined with beige velvet; the frieze ornamented with *bronze doré* floral festoons and infant satyrs with grapes; cabriole legs.
 Height 29 inches; width 24 inches
418. PAIR CARVED AND GILDED BANQUETTES *Louis XVI Style*
 Oblong top in flowered silk brocade, frame and supports pierced and carved. (Alexander)
 Length 5 feet 2 inches
419. PAIR CARVED AND GILDED BANQUETTES *Louis XVI Style*
En suite with the preceding. (Alexander)
420. PAIR CARVED AND GILDED BANQUETTES *Louis XVI Style*
En suite with the preceding. (Alexander)
421. PAIR CARVED AND GILDED GRANDES BERGÈRES *Louis XVI Style*
 In flowered silk brocade matching the preceding banquettes. (Alexander)
422. CARVED AND GILDED SETTEE *Louis XV Style*
 Three-section settee called a *confidente*. *En suite* with the preceding *bergères*. (Alexander)
 Length 9 feet 11 inches
423. CARVED AND GILDED CANED CANAPÉ *Louis XVI Style*
 The seat cushion in flowered brocade matching the preceding. Together with a shaped stool similarly covered. [Lot.] (Alexander)
 Length 5 feet

[See illustration]



[NUMBER 414]



[NUMBER 424]

GEORGE III SILVER INKSTAND: NUMBER 471

424. LOUIS XV LIGHT ACAJOU SLANT-FRONT WRITING DESK

French, XVIII Century

130- Small *bureau à dos d'âne* with quartered veneers of light mahogany, the interior fitted for writing with four serpentine small drawers; one long and two small drawers below; cabriole legs.

Height 35½ inches; width 25 inches

[See illustration]



[NUMBER 425]

425. PAIR LOUIS XVI CARVED WALNUT AND
YELLOW SILK BROCADE BERGÈRES

French, XVIII Century

Arched rectangular back, seat, and seat cushion in yellow and blue silk brocade; molded and fluted frame and supports carved with rosettes on the dies.
(Crocker)

[See illustration]

30 - 426. CARVED LIGHT WALNUT CONSOLE

Louis XV Style

The voluted frieze, supports and stretchers carved with shells and flowers and finished simulating pickled pine; the top of Skyros marble. (Sheridan)

Height 33 inches; length 38½ inches

- 65-
427. PAIR HORSESHOE EASY CHAIRS IN SKY BLUE LEATHER
Modernistic frame, with seat cushion, in light blue vealskin. (*N. Y. Private Collector*)

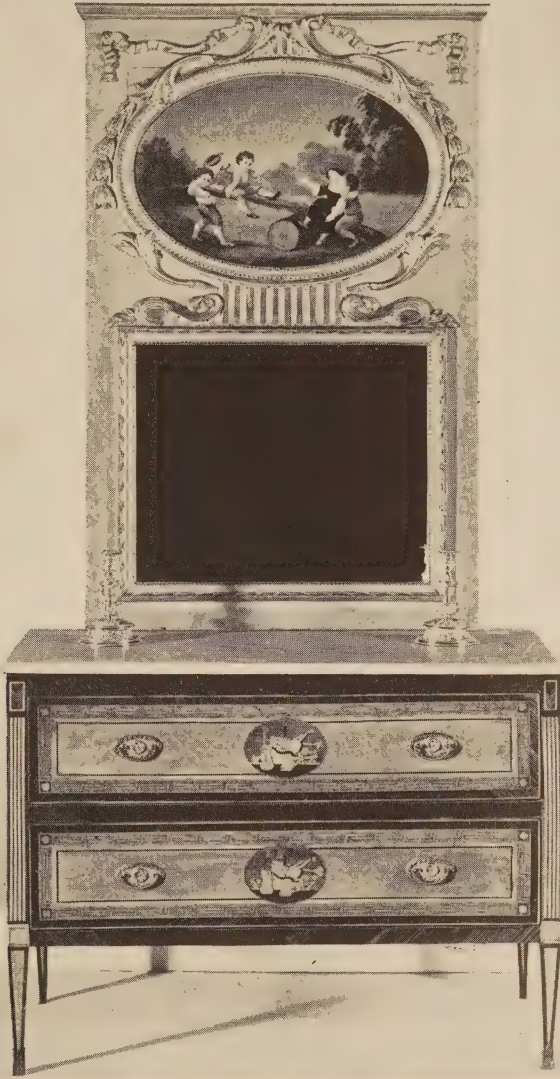
- 17th
428. CHINESE CARVED COROMANDEL LACQUER AND
TEAKWOOD TABLE SCREEN
Screens carved with dragons and lotus, centring a medallion of Shou Lao and acolytes; teakwood stand. (*N. Y. Private Collector*)
Height 33½ inches; width 23½ inches

- 135-
429. LOUIS XVI SYCAMORE MARQUETERIE COMMODE
Piedmontese, Late XVIII Century
Obong body contains two long drawers decorated with medallions of musical trophies in *marqueterie* in a ground of light sycamore bordered with darker woods; white tapestry marble top. (*Sheridan*)
Height 38 inches; length 50 inches

[See illustration]

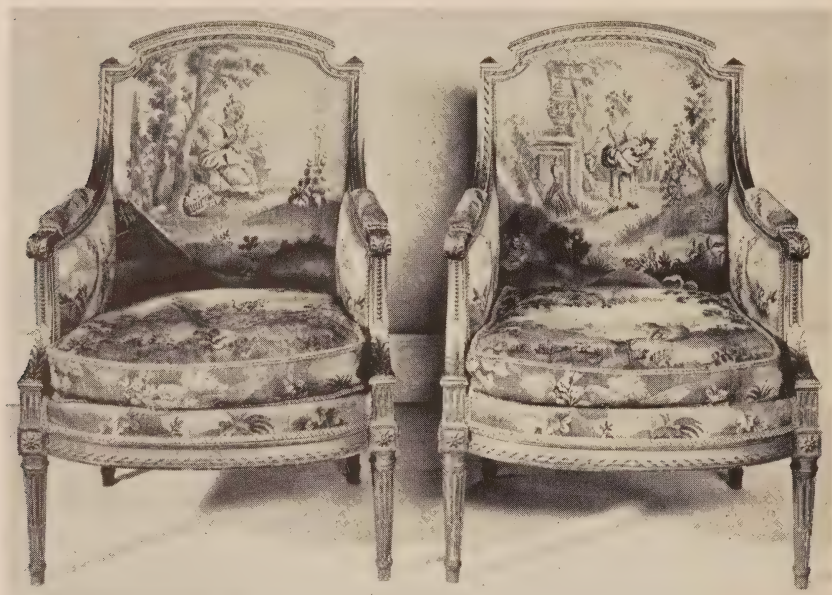
- 60-
430. LOUIS XVI CARVED AND LAQUÉ TRUMEAU WITH OIL PAINTING
French, XVIII Century
The mirror glass is framed in carved and gilded moldings in a grayish white ground and above it is an oval gilded frame containing a painting on canvas depicting children in the country playing seesaw. (*Sheridan*)
Height 5 feet 3 inches; width 41 inches

[See illustration]



[NUMBERS 429 AND 430]

WROUGHT BRASS CANDLESTICKS: NUMBER 103



[NUMBER 431]

431. PAIR LOUIS XVI CARVED AND GILDED BERGÈRES IN
AUBUSSON TAPESTRY

French, XVIII Century

Open arched back with closed sides, acanthus-carved frontal supports, round fluted and tapering legs, the frame ribbon-carved; covered in Aubusson tapestry of the period, the backs woven with figures of children, after Huet, the seats with animals of La Fontaine's *Fables*, after J. B. Oudry. Frames of later date.

[See illustration]

432. LOUIS XVI CARVED AND GILDED CONSOLE TABLE

Southern French, Late XVIII Century

Half-round table on four tapered and fluted supports; decorated glass top. Imperfect.

Height 32 inches; length 36 inches

433. TWO PAIRS PAINTED AND PARCEL-GILDED IRON ALTAR CANDLESTICKS

Italian, Early XVII Century

With ringed shaft and scrolled and voluted tripod, supporting a cylindrical candle holder; painted red and gold. (N. Y. Private Collector)

Height 43 inches

434. PAIR LOUIS XVI AUBUSSON TAPESTRY STOOLS *French, XVIII Century*
Cushioned circular top in silk-woven tapestry of the period, designed with delicate clusters and sprays of blossoms and leaves in pastel colors. Carved and gilded frame of later date. *Diameter 18 inches*
From Duveen Bros., Inc., New York
435. TURNED WALNUT SETTEE IN GRAY AND GOLD BROCATELLE
Spanish, XVII Century
Arched back and seat upholstered and covered in brocatelle; curved arms, turned legs and stretchers. *Length 6 feet*
436. LOUIS XVI AUBUSSON SILK TAPESTRY THREE-FOLD SCREEN
French, XVIII Century
Composed of three arched panels of Aubusson silk tapestry woven with bouquets of flowers, festoons, ribbons, and vines in beautiful colors in a white ground. Gilded frame of later date. *Height 5 feet 3 inches; width 54 inches*
437. WALNUT SERVING TABLE AND WHITE LACQUERED ARMCHAIR
Two-tier serving table with yellow Siena marble top, in the Louis XVI style; armchair with white moiré seat, in the Hepplewhite style. [Lot.] (*Sheridan*)
438. TWO PAIRS DARK GREEN VELOURS WINDOW HANGINGS
Trimmed with antique Aubusson tapestry borders, interlined and lined with green satin and with tapestry valances *en suite*. (*Alexander*)
Height 10 feet; width 6 feet 4 inches
439. TWO PAIRS IVORY BROCADE WINDOW HANGINGS WITH VALANCES
Louis XVI Style
Interlined, and lined with taffeta. Together with a balcony drapery *en suite*. [Lot.] (*Alexander*) *Length about 15 feet*
440. THREE PAIRS GREEN BROCADE WINDOW HANGINGS
A wide pair and two narrow pairs, interlined and lined with sateen. With ties. [Lot.] (*Alexander*) *Length about 10 feet 10 inches*

[END OF SECOND SESSION]

\$ 15,241.50

THIRD AND LAST SESSION
Saturday, April 19, 1941, at 2 p. m.
CATALOGUE NUMBERS 441 TO 678 INCLUSIVE

GEORGIAN SILVER AND SHEFFIELD PLATE

- 750
—
441. THREE GEORGE III SILVER TABLESPOONS
Edinburgh and London, 1795-1801
Plain spoons with engraved initials; various makers. (*Randolph*)
- 250
—
442. FOUR GEORGE III SILVER TABLESPOONS *London and Dublin, 1804-10*
Plain spoons, three with fiddle handles; three with engraved monograms.
(*Randolph*)
- 750
—
443. FIVE GEORGE III SILVER DESSERT SPOONS *Saml. Hennell, London, 1808*
Plain spoon with sheared bowl. (*Randolph*)
- 5-
444. TWELVE GEORGE III SILVER COFFEE SPOONS *London, 1785-1815*
Plain spoons, some monogrammed, by various makers; one of Continental
silver. [Lot] (*Randolph*)
- 250
—
445. SIX GEORGE III SILVER TABLESPOONS *London, 1805*
Plain spoons, with identical crest. By Thos. Beezley and Wm. Eley & Wm.
Fearn. (*Randolph*)
- 50
—
446. SIX GEORGE III SILVER TABLESPOONS *Thos. Beezley, London, 1808*
Similar to the preceding. (*Randolph*)
- 20-
447. SET OF GEORGE III PARCEL-GILDED SILVER SERVING SPOONS
London, 1790-1802
Comprising two pairs of tablespoons and a perforated berry spoon, with
gilded bowls *repoussé* at a later date with flowers and fruit. Various dates
and makers. In case. (*Rogers*)
From Shapland, London
- 60-
448. ELEVEN GEORGE III SILVER PISTOL-HANDLED KNIVES
English, circa 1770
Plain pistol handles, crested. Unmarked. (*Randolph*)
- 50
—
449. SET OF TWELVE GEORGE III GILDED SILVER AND MOTHER OF PEARL
DESSERT KNIVES AND TWELVE FORKS
Wm. Eley and Wm. Fearn, London, 1817
Plain knife and four-pronged fork, gilded, with mother of pearl barrel-
shaped handles. In case. (*Rogers*)

150- 450. TWELVE GEORGE III SILVER PISTOL-HANDLED KNIVES AND
 TWELVE TWO-PRONGED FORKS *Joseph Hardy, London, circa 1790*
 Plain pistol handle with leaf-voluted butt. Maker's marks only. (*Randolph*)

335- 451. GEORGIAN SILVER SERVICE OF FLATWARE *London, 1781-1826*
 Service for twelve of tablespoons, dessert spoons, coffee spoons, dinner forks,
 and dessert forks. Together with two dozen modern silver pistol-handled
 knives by Crichton & Sons, London. [Lot.]

15- 452. THREE GEORGE III SILVER SALTS *London, circa 1775-80*
 Plain round salt on three hoof feet. Together with a modern silver-mounted
 glass mustard pot. [Lot.] *Diameter 2½ inches*

62- 453. FOUR GEORGE III SILVER COASTERS *John Robertson Co., Sheffield, 1806*
 Plain round gadrooned coaster with turned wood base inset with crest.
 (*Rogers*) *Diameter 5¾ inches*

1713 454. GEORGE II REPOUSSÉ SILVER MUG *John Langlands, Newcastle, circa 1755*
Repoussé at a later date with blossoms and rococo scrolls centring a crested
 cartouche. Marked underfoot; date letter illegible. (*Randolph*)
Height 4¾ inches

30- 455. PAIR GEORGE III SILVER GOBLETS *London, 1816-7*
 Plain oviform goblet on gadrooned round foot. *Height 5 inches*

15- 456. GEORGE III SILVER MILK JUG *London, 1812*
 Bulbous oval jug *repoussé* with a collar of cabling above a band of punched
 spiral fluting. *Height 4¼ inches*

45- 457. GEORGE III 'CHIPPENDALE' SILVER TEA CADDY
Dan. Smith & Robt. Sharp, London, 1768
Bombé quadrangular caddy with valanced sides, lid with gadrooned edge,
 and gadroon-molded skirt with shell feet. Marked on cover and underfoot.
 (*Randolph*) *Height 5¼ inches*

[See illustration]

170- 458. PAIR GEORGE III IRISH SILVER GRAVY BOATS
Matthew West, Dublin, circa 1770
 Spouted boat with scrolled loop handle and three shell-molded legs; *repoussé*
 in intaglio with radial curved flutings alternating with stalks of grasses.
Length 7¾ inches

[See illustration of one]



[NUMBER 460]

AT TOP: NUMBERS 457-459-458

- 320- 459. GEORGE II SILVER PEAR-SHAPED TEAPOT *Thos. Wright, London, 1756*
 Plain inverted pear-shaped body with curved duck-head spout, pearwood loop handle, and hinged dome cover. Marked on cover and underfoot.
 (Randolph) *Height 7 inches*

[See illustration]

- 140- 460. SET OF FOUR GEORGE III SILVER COLUMNAR CANDLESTICKS
Tudor & Leader, Sheffield, 1773
 Cylindrical column ornamented with husk-garlanded Adam paterae and anthemia, with festooned capital and gadrooned *bobèche*; square foot molded with leafage at the corners and finished with a gadroon molding.
Height 12½ inches

[See illustration]



[NUMBER 464]

AT TOP: NUMBERS 461-462-461

- 170- 461. PAIR GEORGE III 'CHIPPENDALE' SILVER TEA CADDIES IN ORIGINAL YEWOOD CASE *John Darwell, London, 1768*
 Quadrangular *bombé* caddy with gadrooned and shell-molded skirt and gadrooned oblong cover, crested with a flower stem. In original velvet-lined inlaid yewwood case. *Height 5 inches*

[See illustration]

- 130- 462. PAIR GEORGE III SILVER TWO-HANDLED SWEETMEAT BOWLS *R. Makepeace & R. Carter, London, 1777*
 Oval dish with beaded edges, loop handles, and bases; engraved coat of arms. *Length 9½ inches*

[See illustration of one]

- 130- 463. PAIR GEORGE III SILVER TWO-HANDLED SWEETMEAT BOWLS *R. Makepeace & R. Carter, London, 1777*
 Similar to the preceding.

464. GEORGE IV SILVER TEA SERVICE

London, 1824

Skittle-ball teapot, creamer, and sugar bowl; together with a matching hot-water kettle on stand of later date, London, 1879. All with rococo spiral gadrooning about the lower body and a collar of spiral fluting around the rim. Largely reconstructed. [Lot.]

[See illustration]



[465]

[466]

[467]

465. GEORGE III SILVER AND CUT GLASS EIGHT-BOTTLE CRUET

Robt. Garrard, London, 1804

Oval stand with gadrooned edge and two shell-molded and curled ends; fitted with no less than eight *diamanté*-cut glass condiments, three with silver mounts. An exceptional piece.

Height 10½ inches

[See illustration]

466. GEORGE III WROUGHT SILVER COVERED URN

Stephen Adams, London, 1807

Amphora in the Roman style with cover and two upright handles scrolling into rosettes; chased with bands of undulating foliations with rosettes beneath the handles and a collar of acanthus leaves around the lower body. The cover is unmarked. (*Randolph*)

Height 15 inches

[See illustration]

- 160- 467. GEORGE III SILVER COFFEE POT *Henry Greenway, London, 1776*
 Tall pear-shaped pot with scrolled and ebonized handle, beaded and curved
 spout, and domed cover with urn finial. Shoulder and cover both marked.
Height 11¼ inches
 [See illustration on the preceding page]

- 425- 468. GEORGE III SILVER HELMET-SHAPED CREAMER
Wm. Bayley, London, 1792
 Plain jug with elongated loop handle and square foot; interior gilded.
Height 6 inches

- 95- 469. WILLIAM AND MARY SILVER CUP *London, 1689*
 Cylindrical cup of plain silver, rounded at base. Four marks underfoot;
 maker's mark H T with crown and star. (*Randolph*). *Height 2½ inches*

- 40- 470. GEORGE III SILVER WAITER *Joseph Hawley, London, 1794*
 Plain round salver with beaded edge and engraved crest. (*Randolph*)
Diameter 8 inches

- 45- 471. GEORGE III SILVER INKSTAND *John Roberts, Sheffield, 1808*
 Oblong gadrooned standish, the ends molded with leaf scrollings; fitted with
 two silver-mounted pressed glass bottles and a taper holder.
Length 10 inches
 [See illustration on page 80]

- 210- 472. GEORGE I SILVER LIGHTHOUSE-FORM COFFEE POT *London, 1718*
 Plain pyramidal pot with scrolled pearwood loop handle, shell-molded up-
 curved spout and hinged dome cover with acorn finial. Marked on shoulder
 and cover. (*Randolph*) *Height 9½ inches*
 [See illustration]

- 130- 473. GEORGE III SILVER COFFEE BIGGIN ON STAND
London, 1804, and Birmingham, 1815
 Ovoid pot with loop handle, gadrooned lip and domed cover, engraved with
 coat of arms, by Matthew Boulton, Birmingham, 1815; on gadrooned claw-
 and-ball-foot tripod stand with spirit burner, by Samuel Hennell, London,
 1804. *Total height 11¾ inches*
 [See illustration]



[474]

[473]

[472]

474. GEORGE I SILVER DOME-TOP COVERED TANKARD

Isaac Cornasseau, London, 1721

Plain cylindrical tankard with domed cover, loop handle, and knuckled billet. Well-marked on shoulder and cover.

Height 6¾ inches

[See illustration]

475. GEORGE III SILVER SALVER

John Lamb, London, 1789

Plain round tray with beaded edge and three tongue-shaped feet; engraved at a later date with coat of arms.

Diameter 11¾ inches

476. TWELVE GEORGE III SHEFFIELD PLATE SMALL PLATES

Circa 1800

Plain with valanced gadrooned edge and engraved crest. *Diameter 7 inches*

477. ENGRAVED SILVER SALVER *Emes & Barnard, London, 1840*
 In the George II style, the border and three feet molded and chased with
 C-scrolls and shells, the centre engraved with foliage. *Diameter 15 inches*

Withdrawn

478. SET OF TWELVE STERLING SILVER SHAPED SERVICE PLATES *Lambert Bros., New York*
 Large plate in the Louis XVI style, with plain centre; lobed border delicately
 chased with beading and leafage. Weight of each about 21 ounces.
Diameter 11 inches

240-

479. EMPIRE GILDED SILVER AND CUT GLASS COVERED SWEETMEAT URN *French, circa 1815*
 Urn cut with flutings mounted on gilded silver square base supported by
 swans, with vine-scrrolled handles, domed cover, and flaring rim with a collar
 of *ajouré* vine branches pierced for twelve spoons. *Height 13½ inches*

30-

480. PAIR GEORGE III SHEFFIELD PLATE SAUCE TUREENS *Fenton, Creswick & Co., Sheffield, circa 1795*
 Oval tureen and cover with gadrooned rims, rustic loop handles, and shell-
 and leaf-molded feet. (*Rogers*) *Length 7½ feet*

95

[See illustration]

481. GEORGE III SHEFFIELD PLATE OVAL TUREEN *Circa 1795*
 Large tureen similar to the preceding, engraved with coat of arms. (*Rogers*)
Length 15½ inches

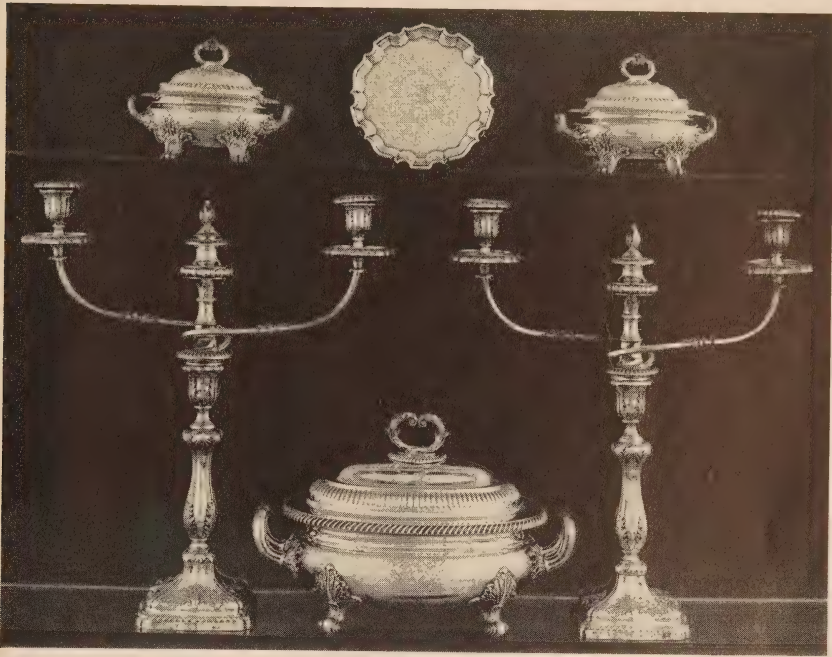
90-

[See illustration]

482. PAIR GEORGE III SHEFFIELD PLATE WAITERS *Circa 1775*
 Small plain piecrust salver engraved with crest, on three scroll feet.
 (*Rogers*) *Diameter 7 inches*

40-

[See illustration of one]



[483]

[481]

[483]

AT TOP: NUMBERS 480-482-480

483. PAIR GEORGE III SHEFFIELD PLATE TABLE CANDELABRA *Circa 1815*
 With quadrangular baluster stem on valanced square foot; *repoussé* with shells and leafage. Fitted with detachable reeded and spiraled arms for three lights. (Rogers) *Height 20 inches*

[See illustration]

484. TWO GEORGIAN SHEFFIELD PLATE OVAL PLATTERS
 Large well-and-tree platter with spirally gadrooned edge; and a plain oval platter with reeded edges, *circa 1810*. [Lot.] *Lengths 23 and 16 inches*

485. PAIR WILLIAM IV SHEFFIELD PLATE WINE COOLERS *Circa 1835*
 Inverted pyriform with fluted sides, leaf-scrolled handles, and four leaf-molded feet. Liner with detachable rim molded with shells and leafage. (Randolph) *Height 9¼ inches*

486. PAIR GEORGE III SHEFFIELD PLATE CANDLESTICKS WITH ETCHED
GLASS HURRICANE SHADES *Circa 1810*
40- Round reeded and tapering candlesticks with reeded and leaf-molded cir-
cular foot. Fitted with a thistle-form hurricane shade of later date, cut with
sprays of leafage and asters. *Height 23 inches*
487. GEORGE III SHEFFIELD PLATE CHAMBER CANDLESTICK
AND WICK LAMP *Circa 1790*
17- Plain reeded oval chamber candlestick with extinguisher and urn *bobèche*,
and a plain oval wick lamp; reeded edges. [Lot.] (*Rogers*)
Heights 4 and 4¾ inches

ETCHINGS AND ENGRAVINGS

488. ETCHING *Nicolas Charlet*
Janet Old man seated, and other sketches. Signed. Framed. (*N. Y. Private Col-
lector*)
From the Peoli Collection
489. ETCHING *Seymour Haden*
10- The Village Ford. Harrington no. 216; Drake Supplement no. 211. Signed
in the plate and dated 1881. First state; fine impression. Framed. (*N. Y.
Private Collector*)
490. MEZZOTINT PORTRAIT *Richard Josey, after Whistler*
12- Thomas Carlyle. Proof on India paper, signed by both artists. Whistler has
signed this proof with his name besides his butterfly. Framed. (*N. Y. Pri-
vate Collector*)
491. ETCHING *Seymour Haden*
7- Kidwelly Town. Harrington no. 24; Drake no. 22. Proof on vergé paper.
Signed in the plate and dated 1859. First state. Framed. (*N. Y. Private
Collector*)
492. MEZZOTINT ENGRAVING IN COLORS *S. Arlent Edwards, after Leonardo da Vinci*
22- Le Belle Ferronnière. Signed artist's proof medium folio, good impression;
framed. (*N. Y. Private Collector*)
From E. L. Knoedler, New York
493. ETCHING *Seymour Haden*
10- The Turkish Bath with One Figure. Harrington no. 134; Drake, no. 119.
Artist's proof on old English paper, signed in the plate. First state. Fine
impression; framed. (*N. Y. Private Collector*)

494. STIPPLE ENGRAVING *T. Cheesman, after John Trumbull*
 General Washington. Full length in uniform, turned slightly to left. Pubd. London, Aug. 1, 1796. Wide margins; framed. (N. Y. Private Collector)
495. MEZZOTINT ENGRAVING IN COLORS *S. Arlent Edwards, after Lancret*
 Garden Party. Medium folio, good impression. Signed artist's proof. Framed. (Alexander)
496. TWO MEZZOTINT ENGRAVINGS IN COLORS *After Reynolds*
 Mrs Bouverie and Mrs Crewe, by Jos. Marchi; and Pick-a-Back, Mrs Payne-Gallwey, by J. R. Smith. Medium folios; framed. [Lot.] (Alexander)
497. ETCHING *Rembrandt van Rijn*
 Negress Lying on a Couch. Signed and dated 1658 in the plate. Bartsch no. 205. Framed. (N. Y. Private Collector)
498. FOUR FRENCH COLOR PRINTS
 Two pastorate prints in the crayon manner, by Demarteau after Huet; Le Petit Jour, by DeLaunay in the stipple manner; and Mrs Fitzherbert, by Jno. Condé after Cosway. Late impressions. Framed. [Lot.] (Alexander)
499. MEZZOTINT ENGRAVING IN COLORS *Charles Bird*
 Landscape with Windmill. Signed and inscribed in margin, *Engraved and printed in colors at one printing without retouching*. Pubd. New York, 1911; framed. (N. Y. Private Collector)
500. TWO ENGRAVINGS
 The New York Crystal Palace; and The Amstel, photo-engraved plate with inscription: *Royal Institution March 29, 1879*, signed by Seymour Haden. Framed. [Lot.] (N. Y. Private Collector)
501. ETCHING *Axel H. Haig*
 Stockholm. Together with a photogravure. Both signed. Framed. [Lot.] (N. Y. Private Collector)

- 10- 502. COLORED ENGRAVING *C. Turner, after Chalon*
 The Alehouse Door. Folio, hand-colored, with good margins and full title;
 pubd. London, 1802. Framed. (*Thieriot*)

SPORTING PRINTS

- 30- 503. SET OF FOUR STEEPLECHASING AQUATINTS IN COLORS
By and after Chas. Hunt
 Northampton Grand National Steeple Chase, 1840, plates 1-4; The Start;
 The Brook; The Fence; and Coming In. Folios, hand-colored, full margins
 with inscriptions; pubd. London, 1841. Bird's-eye maple frames. (*Thieriot*)

- 45- 504. SET OF THREE COACHING PRINTS IN COLORS *After T. Walsh*
 Leeds and London Mail; Plymouth and London Royal Mail; and York
 and London Royal Mail. Oblong folios, hand-colored, margins trimmed.
 Framed. (*Thieriot*)

- 40- 505. SET OF FOUR RACING PRINTS IN COLORS *After J. F. Herring, Sr.*
 Saddling; A False Start; The Run In; and Returning to Weigh. Oblong
 folios, hand-colored, matted to show title only. Framed. (*Thieriot*)

- 150- 506. PAIR FISHING AQUATINTS IN COLORS *G. Hunt, after Pollard*
 Fly Fishing; and Trolling for Pike. Folios, fine impressions with good
 margins; pubd. by J. Moore, London, circa 1825. Framed. (*Thieriot*)

- 10- 507. SET OF SIX ENGRAVINGS IN COLORS *Chas. Hunt, after Newhouse*
 The Express Extraordinary. Medium folios, with titles and running story
 inscriptions; pubd. London, 1839. Later impressions, hand-colored.
 Framed. [Lot.] (*Thieriot*)

- 20- 508. PAIR FOXHUNTING AQUATINTS IN COLORS *C. Hunt, after F. C. Turner*
 The Young English Fox Hunter: Breaking Cover, and The Death. Folios,
 hand-colored, with margins and full inscriptions; pubd. London, 1841.
 Framed. (*Thieriot*)



[NUMBER 509]

509. SET OF FOUR SHOOTING AQUATINTS IN COLORS *T. Sutherland*
 Grouse Shooting; Wild Duck Shooting; Partridge Shooting; and Pheasant
 Shooting. Oblong folios, fine impressions with titles and good margins;
 pubd. by R. Ackermann, London, circa 1825. Framed. (*Thieriot*)

[See illustration of two]

- 270- 510. SET OF SIX SHOOTING AQUATINTS IN COLORS *Hunt, after F. C. Turner*
 Grouse Shooting; Partridge Shooting; Pheasant Shooting; Woodcock
 Shooting; Duck Shooting; and Snipe Shooting. Folios, beautiful impres-
 sions with wide margins and full titles; pubd. London, 1841. Framed.
 (*Thieriot*)

[See illustration of two]

- 35- 511. FIVE RACING PRINTS IN COLORS
 Grand Leicestershire Steeple Chase, Plates 4 and 6; and Portraits of Sefton,
 Meteor, and Industry. Small folios; pubd. 1830-78. Framed. [Lot.]
 (*Thieriot*)

- 45- 512. THREE COACHING PRINTS IN COLORS *After Havell and Pollard*
 The Mail Coach Changing Horses; The Birmingham Tally-Ho! Coaches;
 and The Blenheim, Leaving the Star Hotel, Oxford. Medium folios;
 various engravers, pubd. 1823-31. Later impressions. Framed. (*Thieriot*)

- 58- 513. FIVE COLORED RACING AND BOXING PRINTS
 Doncaster Great St. Leger, 1839, after Herring; Race for the Great St.
 Leger Stakes, 1836, after Pollard; Grand Stand, Goodwood, after C. Hunt;
 and two colored boxing prints. Folios; late impressions. Framed. [Lot.]
 (*Thieriot*)

- 15- 514. PAIR AQUATINTS IN COLORS
 Windsor Castle and Windsor Great Park. Medium folios, no margins or
 titles; framed. (*Thieriot*)



[NUMBER 510]

ENGLISH FURNITURE AND DECORATIONS



[NUMBER 515]

515. SET OF SIX GEORGIAN CUT GLASS ALE GOBLET WITH THE ARMS
OF JOHN MONTAGUE, 5TH EARL OF SANDWICH (1766-1814)

Handsome pear-shaped goblet cut in *diamanté* pattern and engraved with the arms and initials of John Montague, Earl of Sandwich; the socle and foot plain.

Height 5¾ inches

Collection of Franklyn M. McClood, Manchester, England

[See illustration of three]

516. STAFFORDSHIRE DECORATED CHINA DINNER SERVICE

Circa 1840

Comprising a circular soup tureen with cover and stand, pair sauce tureens with covers and stands, a vegetable tureen, two large oval platters, two round dishes, a dish strainer, a small platter, twenty soup plates, fifty-one dinner plates, ten dessert plates, eleven salad plates. Printed in colors with flowers in the Oriental taste. Marked VESPER.



[518]

[517]

[518]

517. IMPORTANT MINTON PÂTE SUR PÂTE PORCELAIN VASE BY L. SOLON

Two-handled vase in the Greek style, decorated in white cameo style with groups of nymphs and amors in a deep olive green ground; around the neck and foot are medallions of amors and bands of acanthus, the gilded handles spring from double-Medusa masks. Surmounting plinth of gilded bronze and acajou. Signed L. SOLON.

Height 25¾ inches

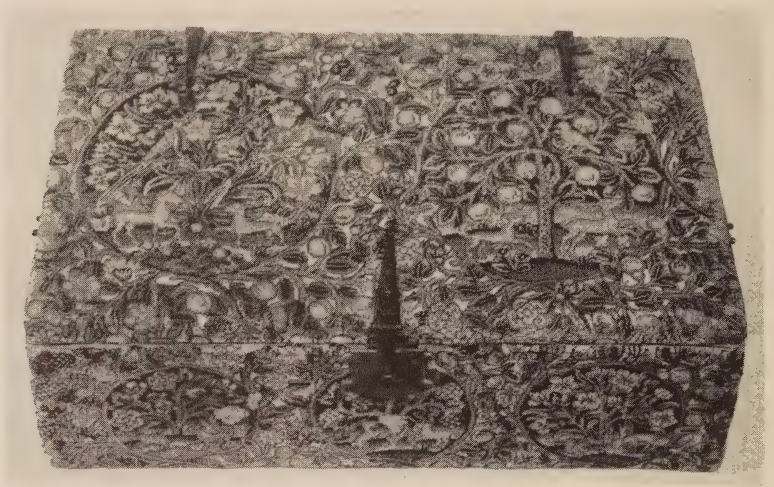
[See illustration]

518. PAIR MINTON PÂTE SUR PÂTE VASES BY L. SOLON

Two-handled amphora vase in the Greek style, finely decorated in white cameo style with female figures seated on tripods, emblematic of the Virtues, between which are hovering amors, in a chocolate brown ground; the shoulder, handles, neck, and foot deep green, gold, and blue. Signed L. SOLON. (*Alexander*)

Height 16 inches

[See illustration]



[NUMBER 519]

- 140- 519. ELIZABETHAN PETIT POINT LACE BOX *English, Late XVI Century*
Oblong box entirely covered with very fine *petit point* worked with medallions of flowering and fruiting trees, stags, unicorns and other animals in a ground overrun with curving stems of flowers and fruit; in subdued shades of brown, blue, and green. *Length 22 inches*

[See illustration]

- 30- 520. GEORGIAN INLAID MAHOGANY SIGN-POST BAROMETER
P. Massino, Edinburgh, XVIII Century
Slender upright case banded with light and dark wood inlay; glazed dial and broken triangular pediment. *Height 38½ inches*

- 15- 521. FIGURED WALNUT WORK AND WRITING BOX *English, circa 1840*
Oblong, containing lift-out fitted tray, a folding writing desk in the bottom released by a spring. *Length 15¼ inches*

522. REGENCY MAHOGANY MUSICAL BRACKET CLOCK

Wm. & John Evill, Bath, circa 1815

Quadrangular arched case surmounted by a cupola and numerous brass urn finials; dial with painted floral spandrels. Striking and musical movement.

*(Rogers)**Height 28½ inches*

[See illustration on page 138]

523. SHERATON INLAID MAHOGANY SHAVING MIRROR

English, circa 1800

Comprising an oblong swiveled mirror surmounting a base with two drawers bordered with light wood inlay.

Height 18¾ inches; width 18 inches

[See illustration on page 117]

524. GEORGIAN MAHOGANY CANTERBURY

English, XIX Century

With three divisions and hinged box top.

Height 20 inches; width 20 inches

525. PAIR GEORGIAN MAHOGANY KNIFE BOXES

English, XVIII Century

With shaped front, hinged slant lid and slotted interior.

Height 14 inches; width 8¾ inches

[See illustration on page 116]

526. GEORGIAN MAHOGANY CELLARET

English, circa 1800

Small oblong chest on stand with square tapered legs. Apparently reconditioned.

Height 26½ inches; width 15 inches

Collection of Sir Thomas Lawrence, P.R.A.

527. REGENCY MAHOGANY BAROMETER

English, circa 1815

Banjo-shaped case containing barometer and thermometer gauges, also embellished with a convex silvered glass medallion.

Length 37½ inches

528. ADAM PARCEL-GILDED BRONZE AND CRYSTAL LUSTRE CHANDELIER

English, Late XVIII Century

Cirlet hung with faceted bead and prism lustres, supporting four *bobêches* with sham candles; above them, two other sprays of lustres. Fitted for electricity. (*N. Y. Private Collector*)

Diameter 16½ inches

From Schmitt Bros., New York

529. SHERATON INLAID ROSEWOOD CANDLESTAND

English, circa 1800

Octagonal top bordered with sycamore, on turned shaft and splayed tripod.

Height 26½ inches; width 15¼ inches



[NUMBER 530]

530. HEPPLEWHITE INLAID LIGHT SYCAMORE 'BEAU BRUMMEL'

English, XIX Century

70- Oblong cabinet table with rising top revealing a hinged mirror and numerous box-like compartments, a baize-lined pull-out shelf in front; square tapered legs. Bordered and banded with tulipwood and other woods.

Height 32 inches; width 24¾ inches

[See illustration]

531. SHERATON INLAID SATINWOOD OVAL TABLE

English, Late XVIII Century

Galleried top of richly figured satinwood inlaid with a marquetry medallion and bordered with kingwood; on four square tapered legs, similarly banded. (Sheridan)

Height 30½ inches; length 39 inches

532. SHERATON GILDED WALL MIRROR

English, circa 1800

Frame composed of fluted columns and ball-decorated cornice; blue, white, and gold *verre églomisé* frieze and old beveled mirror glass.

*Height 34 inches; width 21¼ inches*533. REGENCY MAHOGANY TILTING BREAKFAST TABLE *English, circa 1810*

Tilting oblong top with grooved edge, on turned columnar pedestal and four splayed legs with brass shoes. (Sheridan)

Height 29 inches; length 56 inches

534. SET OF SIX EARLY VICTORIAN MAHOGANY 'PARLOR' CHAIRS

English, 1840-50

With oval open back and molded cabriole legs; seat in fleuretted pale green glazed chintz.

535. LATE GEORGIAN INLAID ROSEWOOD WORK AND CHESS TABLE

English, circa 1825

Oblong top inlaid with a chess board in light and dark woods; fitted with a pull-out sewing bag lined with silk fabric; on square pedestal and splayed base.

Height 29 inches; width 31 inches

536. REGENCY TURNED MAHOGANY FOUR-TIER WHATNOT

English, circa 1815

Composed of four square shelves supported on turned slender corner posts with spherical finials, a drawer in the lower part.

Height 5 feet 2½ inches; width 17 inches

537. SHERATON DECORATED SATINWOOD FIVE-CHAIR-BACK SETTEE

English, circa 1800

The back consists of five latticed splats between tapered posts, painted with medallions of amors after Cipriani, the slightly conforming crest rail with drapery swags flowers and fruits. Caned seat, eight round tapered supports; with a brocade seat cushion. (*Sheridan*) *Length 6 feet 10 inches*

From Stuart & Turner, London

[See illustration]

538. QUEEN ANNE INLAID ROOT WALNUT TALL-CASE CLOCK

Jno. Pyke, London, Early XVIII Century

Tall paneled case with arched hood and flat pediment; below the arch, a frieze of carved fretwork, repeated in small side panels. Metal dial with maker's name and with pierced ormolu spandrel ornaments. The case is veneered with richly figured burl walnut paneled with pencil inlays. Striking movement. *Height 8 feet; width; 20½ inches*

From Turner & Lord, London

Collection of Howard Gould, Parke-Bernet Galleries, Inc., New York, 1940

539. GEORGE III MAHOGANY PEMBROKE TABLE *English, XVIII Century*

Oblong top with two hinged leaves, one drawer; square tapered legs.

Height 29 inches; length open 33½ inches

540. GEORGIAN CARVED AND GILDED WALL MIRROR

Rectangular frame with pierced and carved crest composed of C-scrolls and flowers. *Height 37 inches; width 24 inches*

541. ADAM PAINTED AND DECORATED CONSOLE TABLE

English, XVIII Century

Painted or lacquered ivory yellow and decorated with flowers, urns, and medallions. (*Crocker*) *Height 32¾ inches; length 48 inches*

542. GEORGE III MAHOGANY SIDEBOARD

English, circa 1800

Commodious board of rectangular form, the front equipped with two deep bottle drawers flanking a long drawer, while at the back is a compartment which runs the entire length of the piece and has a hinged lid or cover; stands on six round tapered and fluted legs, four of which are in front and are extensions of the fluted stiles. (*Sheridan*)

Height 44 inches; length 6 feet 10 inches

Collection of Sir Timothy Eden, Windlestone Hall, Durham



[NUMBER 537]

- 110- 543. SHERATON INLAID MAHOGANY WRITING TABLE *English, XIX Century*
 Oblong top lined with dark leather, five drawers at one side; grooved square tapered legs with spade feet. Top and sides banded with light wood inlay.
Height 30 inches; length 54 inches

From Hampton's, Ltd., London

- 70- 544. GEORGE III MAHOGANY SLANT-FRONT DESK *English, XVIII Century*
 Straight front contains five cockbeaded drawers, above which a hinged slant lid encloses small drawers and pigeonholes; on bracket feet. Brass carrying handles at either end.
Height 44 inches; width 42 inches

- 160- 545. REGENCY INLAID SATINWOOD SOFA TABLE *English or Scottish, circa 1815*
 Constructed of richly figured golden yellow satinwood bordered and banded with yellow holly and amaranth; oblong top with two hinged leaves on pivoting brackets, two drawers at one side; supported on square baluster pedestal and four outspayed legs with chased brass shoes.
Height 28½ inches; length open 6 feet 10 inches

Collection of J. Barnet, Esq., Glasgow, Scotland

[See illustration]

- 35- 546. GREEN AND GOLD LACQUER COMMODE *Georgian Style*
 Chest of three drawers on molded straight legs, simulating Chinese lacquer. (N. Y. Private Collector)
Height 42 inches; length 44¾ inches

- 50- 547. GEORGE III INLAID MAHOGANY PEMBROKE TABLE *English, XVIII Century*
 Rectangular top with two hinged leaves, bordered with light wood inlay, one drawer, square tapered legs. *Height 28½ inches; length open 36 inches*

- 40- 548. REGENCY MAHOGANY FOLDING CARD TABLE *English, circa 1810*
 Hinged and folding rectangular top, on four fluted, carved, and tapered round legs; the frieze ornamented with gilded brass mounts.
Height 27¼ inches; length open 36 inches

- 40- 549. RICHLY CARVED MAHOGANY ARMCHAIR *Chippendale Style*
 Shaped open back, cabriole legs, and arms elaborately carved and pierced with leafage, flowers, and dolphin masks; seat upholstered. (Conner)



[NUMBER 545]



[NUMBER 550]

550. SET OF EIGHT SHERATON CARVED MAHOGANY AND GREEN
LEATHER DINING CHAIRS

Two armchairs and six side chairs; open square back with reeded and arched slender slats, seat in green leather trimmed with brass nails, grooved square tapered legs with spade feet.

[See illustration of two]

551. GEORGIAN INLAID MAHOGANY DROP-LEAF TABLE *English, circa 1810*
Rectangular top, bordered with rosewood, has two hinged leaves; supported on turned pillar and cabriole tripod. One drawer. (*Sheridan*)

Height 27½ inches; length open 42 inches

552. FIVE-FOLD SCREEN PAINTED WITH THE TIPPERARY HUNT
 By B. C. NORTON
 Depicting Richard Burke, M.F.H., with his wife and children, huntsmen and whips, with the woods of The Grove in the background. Signed and dated.
Height 6 feet 8 inches; length 8 feet 5 inches
553. REGENCY MAHOGANY CARD TABLE *English, circa 1820*
 Hinged and folding oblong top on four incurvate supports; mounted and inlaid with brass.
Height 29½ inches; length open 36 inches
554. WILLIAM AND MARY INLAID OYSTER WALNUT CABINET
English, Late XVII Century
 Comprising a rectangular cabinet of small drawers enclosed by two doors, surmounting a base with four drawers; veneered inside and out with oyster-figured walnut in a decorative design, banded and inlaid with light wood. Shallow drawer in the cornice. Appears to be an assembled piece.
Height 5 feet 1 inch; width 37 inches
555. REGENCY BRASS-INLAID ROSEWOOD CARD TABLE *English, circa 1815*
 Forms a console when closed; top lined with green baize.
Height 29½ inches; length open 36 inches
556. CARVED MAHOGANY SMALL DROP-LEAF TABLE *Chippendale Style*
 Oblong top, one drawer, claw-footed cabriole legs with X-stretcher. (Sheridan)
Height 28 inches; length open 40 inches
557. CHIPPENDALE MAHOGANY SLANT-FRONT DESK *English, XVIII Century*
 Body contains four long drawers, above which a hinged slant flap encloses small drawers and pigeonholes. With restorations.
Height 40½ inches; width 36 inches
558. GEORGIAN MAHOGANY COLLECTOR'S CABINET *English, XVIII Century*
 Fitted with numerous divisions and small drawers enclosed by two paneled doors, a baize-lined pull-out shelf in front. (Sheridan)
Height 52 inches; width 28¼ inches

559. PHYFE CARVED MAHOGANY TWO-PEDESTAL DINING TABLE

New York, N. Y., circa 1815

Top composed of two wide sections with rounded corners and skirted with a molded and gadrooned frieze; each supported on a turned pedestal which springs from three splayed legs carved with stiff acanthus leaves for three-quarters of their length and then reeded, terminating in brass paw feet; top joined by inserting two wide loose leaves at the centre. (*N. Y. Private Collector*)

Height 27½ inches; width 53 inches; length open 9 feet

[See illustration]

560. CHIPPENDALE MAHOGANY GENTLEMAN'S LINEN CABINET

English, XVIII Century

The upper section contains numerous small drawers with brass ring handles, enclosed by a pair of paneled doors; the lower part contains four long drawers, above which is a pull-out shelf. Molded flaring cornice and high bracket feet. (*Sheridan*)

Height 6 feet 8 inches; width 39 inches

561. GEORGIAN CARVED AND GILDED EAGLE CONVEX MIRROR

English, circa 1815

Circular frame embellished with a series of small spheres, surmounted by a carved spread eagle, an acanthus cluster motive at the base.

Height 50 inches; width 29½ inches

562. CARVED MAHOGANY UPHOLSTERED SOFA

Chippendale Style

Upholstered and covered in golden yellow brocatelle, on carved cabriole legs with claw and ball feet; three seat cushions. Made by Palmer & Embury, Orsenigo Co., New York. (*N. Y. Private Collector*)

Length 6 feet 6 inches



[NUMBER 559]



[NUMBER 563]

GEORGIAN MAHOGANY KNIFE BOXES: NUMBER 525

563. SHERATON INLAID MAHOGANY BOW-FRONT SIDEBOARD

English, XVIII Century

200- Curved front contains a shallow drawer at the centre flanked by two deep bottle drawers; the top and front inlaid and banded with satinwood. On six square tapered legs with spade feet. *Height 33½ inches; length 5 feet*

[See illustration]

75- 564. CHIPPENDALE CARVED MAHOGANY UPHOLSTERED ARMCHAIR

Back, seat, and arms in figured pale blue fabric; carved cabriole legs with shaggy paw feet.



[NUMBER 565]

SHERATON INLAID SHAVING MIRROR : NUMBER 523

565. GEORGIAN INLAID MAHOGANY CHEST OF DRAWERS *English, circa 1810*
 Rectangular case of four long drawers, top and front banded with light
 wood inlay; on bracket feet. *Height 34¼ inches; length 37 inches*

[See illustration]

566. GEORGIAN MAHOGANY FALL-FRONT LOW WRITING CABINET

English, circa 1800

Rectangular cabinet fitted with drawers and pigeonholes and having let-down front, a long drawer below; square tapered legs.

Height 35¼ inches; length 37½ inches

567. WILLIAM AND MARY INLAID WALNUT TALLBOY

English or Flemish, Late XVII Century

Case of two small and three long drawers surmounting a stand with one drawer and five spirally turned legs. (*Conner*)

Height 51½ inches; width 40½ inches

568. GEORGIAN MAHOGANY BOW-FRONT CHEST OF DRAWERS

English, circa 1800

Curved front with four cockbeaded drawers, valanced skirt and flaring bracket feet.

Height 33 inches; length 35 inches

569. ADAM CARVED MAHOGANY SIDEBOARD WITH SHAPED FRONT

Convex centre section enclosed by a pair of tambour shutters, above which is a cutlery drawer flanked by two bottle drawers and two small drawers; stands on six square tapered legs with spade feet.

Height 36 inches; length 5 feet

570. HEPPLEWHITE INLAID MAHOGANY AND SATINWOOD SPINET-FORM PIANO

Christopher Ganer, London, 1784

Handsome plain case with oblong hinged top, banded in satinwood and tulipwood, and plain inlaid square tapering legs with a recessed undershelf. Five-octave keyboard, with panel inlaid with green husk festoons and car-touche inscribed: *Christopher Ganer, Londini, Fecit 1784, Broad Street, Soho*. An early example of the square piano. Together with a Sheraton lyre-back adjustable piano chair. [Lot.] (*Wayland*)

Height 32 inches; length 5 feet

[See illustration]

571. GEORGIAN MAHOGANY WRITING TABLE

English, circa 1820

Oblong top lined with tooled dark green leather, fitted with a hinged writing and reading tablet; kneehole front with three drawers supported on four sturdy fluted and round tapered legs. *Height 30 inches; length 50 inches*



[NUMBER 570]

572. GEORGE II CARVED AND GILDED CONSOLE TABLE

Oblong top of *jaune fleuri* marble, on frieze formed of bold rococo scrolls with lion-head terminals and centring a winged female mask; leaf-carved and paneled square supports with scrolled X-stretcher centring a winged mascarón. (*N. Y. Private Collector*)

Height 37 inches; length 5 feet 9 inches

573. GEORGE II CARVED AND GILDED CONSOLE TABLE

Companion to the preceding. (*N. Y. Private Collector*)

574. PAIR BRASS INLAID MAHOGANY CABINETS WITH ETAGÈRES

Regency Style

Rectangular cabinet enclosed by two doors decorated with panels of crotch mahogany, banded with brass inlay; above is an open shelf for volumes and two small drawers with gilded brass ends.

Height 58 inches; width 36 inches

575. DECORATED SYCAMORE AND MAHOGANY COMMODE

Adam Style

Painted with urns, flowers, and medallions; two doors and drawer in front. (*Sheridan*)

Height 33 inches; length 39 inches

576. SHERATON CARVED MAHOGANY FOUR-POST BEDSTEAD

WITH DECORATED TESTER

English, Late XVIII Century

The footposts are tapered and spirally fluted for half of their length, then turned in vase pattern and carved in the Gothic taste, vertically fluted on the lower section; the headposts are tapered and plain. The posts support a domed tester with its original arched cornice all around, painted with flowers and foliage in colors and ornamented with lion masks, from which depend gilded rings. The bed can be taken apart by unscrewing the posts from the bottom section and folding up the frame. (*Sheridan*)

Height 9 feet 6 inches; length 6 feet 11 inches

[See illustration]



[NUMBER 576]

577. CARVED PINE ARMCHAIR IN THE FRENCH TASTE *Regency Style*
 Shaped back, seat, and arms in scarlet and white quilted chintz; molded and
 voluted frame and supports carved with flowers.

578. CARVED MAHOGANY THREE-TIER DUMBWAITER AND A CANDLESTAND *Georgian Style*
 Dumbwaiter with three shaped shelves, on tripod base; candlestand with
 turned shaft and small octagonal top. [Lot.] (*Conner*)
Heights 33 and 42 inches

TAPESTRIES

579. RARE FLEMISH GOTHIC TAPESTRY PANEL *Circa 1510*
 THE HOLY TRINITY. Represented by the figures of three kings seated on
 a Gothic throne, crowned, and holding sceptres and orbs; surrounding them
 is a vast concourse of angels and saints. The predominating colors are crim-
 son, blue, and yellow, and the tapestry is highlighted with silk. In carved
 and gilded frame of later date. (*Alexander*)
Height 46 inches; length 5 feet 10 inches

Note: George Leland Hunter, in a letter to Mrs Charles B. Alexander,
 describes the tapestry panel as the upper central scene of a duplicate of
 the *Creation* tapestry, formerly in the collection of the Duke of Berwick
 and Alba, now in the Spanish State collection. The panel is also identical
 with the upper central scene of the *Seven Deadly Sins* tapestry at Hampton
 Court Palace. *Vide* W. G. Thomson, *History of Tapestry*, London, 1916.

Recorded in George Leland Hunter, *The Practical Book of Tapestries*,
 1925, p. 33

[See illustration]

580. LOUIS XIV AUBUSSON TAPESTRY PANEL *XVII Century*
 Depicting a Roman leader, probably Aurelian, in blue and gold corselet,
 clasping the hand of a female captive (?Zenobia) attended by two maidens;
 in the left foreground, at his feet, a slave is heaping up golden treasures. In
 the background, a crowd of captives leaving the burning city.
Height 7 feet 8 inches; width 5 feet 9 inches



[NUMBER 579]

- 710- 581. IMPORTANT PARIS PRE-GOBELINS TAPESTRY *XVII Century*
 NAUSICAA AND ULYSSES. The Queen and an attendant woman assisting the helpless Ulysses, who has been stranded on the shore; hovering about and above are amors strewing flowers. In the background, behind tall trees, is a rich chariot garlanded with flowers, drawn by two horses. Magnificent border woven with swags of flowers and cartouches enclosing figures of amors and amatory emblems; the top border with two *putti* supporting a baroque cartouche which encloses an escutcheon. The tapestry is woven in silks and wools. (*Alexander*) *Height 10 feet 10 inches; length 16 feet*

[See illustration]

- 725- 582. FLEMISH VERDURE TAPESTRY *Late XVIII Century*
 A summer landscape shaded by the foliage of maples at left and right forming a canopy overhead and framing a copse of poplars in the middle distance; fowl strut on the foreground bank of a stream lined with flowering shrubs; shaded brown and tan border with a vine of peonies and tulips.
Height 8 feet 4 inches; length 10 feet 1 inch

- 725- 583. FLEMISH RENAISSANCE HUNTING TAPESTRY *Late XVI Century*
 Depicting numerous figures of courtiers and ladies engaged in a hunt in a forest and resting, a *château* in the distance; border filled with urns, flowers, etc. (*Alexander*) *Height 9 feet; width 8 feet*

- 700- 584. OUDENAARDE VERDURE TAPESTRY *XVIII Century*
 A wooded landscape with view of a *château* in the central middle distance, deer, and an eagle killing a song bird under the trees; deep brown border with masses of flowers and foliage. Woven in greens, blues, tans, and ivory with touches of Venetian red. (*Rogers*)
Height 10 feet 8 inches; length 16 feet 5 inches



[NUMBER 581]



[NUMBER 585]

- 280- 585. FLEMISH RENAISSANCE TAPESTRY PANEL *XVI Century*
 Pastoral scene depicting shepherds in red and blue, conversing and piping, with their herds grazing in the rolling meadows amid scattered trees with bluish green verdure; in the right foreground, a youth in red climbs a tree to rescue a falcon. *Height 5 feet; length 7 feet*
 [See illustration]

- 100- 586. OUDENAARDE VERDURE TAPESTRY *XVIII Century*
 Depicting two white herons in the foreground of a wooded park with a ruined temple at the left and a glimpse of a vessel on a winding river; *tête de nègre* floral border. *Height 9 feet 1 inch; length 12 feet 6 inches*

- 90- 587. THREE FELLETIN TAPESTRY CANTONNIERES *Circa 1700*
 Composed principally of borders woven with flowers and foliage and trimmed with tasseled fringe.
One: height 8 feet 4 inches; width 7 feet 8 inches
Two: height 8 feet 4 inches; length 9 feet 6 inches

GOTHIC CARVED IVORIES

- 70- 588. GOTHIC CARVED IVORY PLAQUETTE *Ile de France, XIV Century*
 Depicting the Crucifixion with figures of mourners, beneath a triple crocketed arch, in *bas relief*; rich brown patina. (*Lyman*) *Height 3¼ inches*
 Collection of Thomas Sutton, Esq., Esthall, Eastbourne, Sussex, 1917

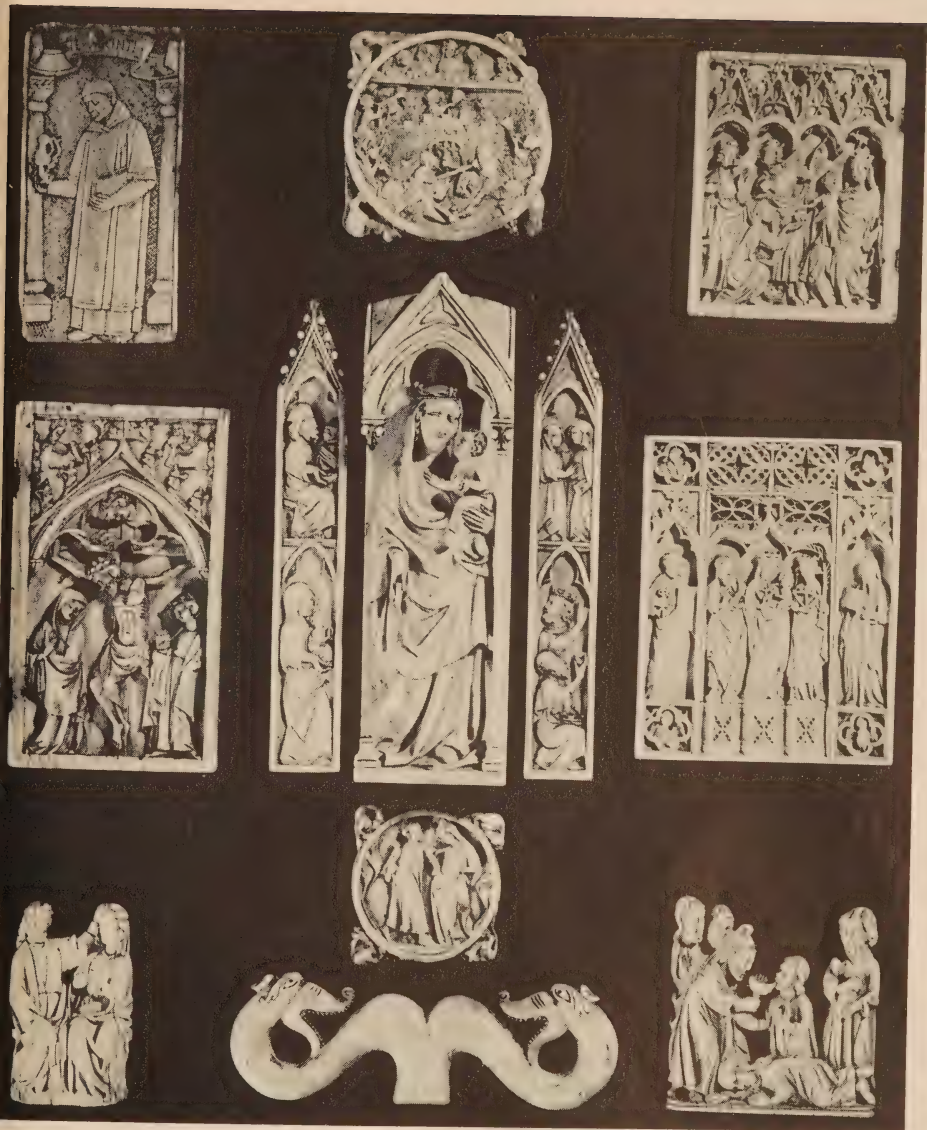
- 45- 589. GOTHIC CARVED IVORY BAS RELIEF GROUP *French, Late XIV Century*
 Seated robed and hooded figure of the Virgin holding upon her left knee the standing Child, Who gives the benediction; rich patina. (*Lyman*)
Height 4¾ inches
 From Julius Licht, Vienna

590. CARVED IVORY HEAD OF A PASTORAL STAFF *Armenian, XI-XII Century*
 In the form of a tau with voluted ends, carved with floral arabesques centering a cursive inscription. (*Lyman*) *Length 6 inches*

591. SILVER-MOUNTED IVORY TOILET BOX *Siculo-Arab, XIV Century*
 Cylindrical box and cover with silver radial hasps and five tiny finial figures of pigeons; on three demi-lion supports. (*Lyman*) *Height 3 inches*

592. GOTHIC CARVED IVORY MIRROR CASE *Ile de France, XIV Century*
 Roundel carved in undercut with figures of monsters at the corners, and portraying a tournament scene with two knights tilting before spectators on the walls of a town, probably from the *Roman de la Rose*. Has repair. (Lyman) *Diameter 3¼ inches*
 Collection Werner, Vienna
 From Arnold Seligmann, Rey & Co., Inc., New York
 [See illustration]
593. GOTHIC CARVED IVORY PLAQUETTE *English, XIV Century*
 Carved in bold relief with the Adoration of the Magi, the Virgin at the right holding the Child upon her lap, beneath a traceried canopy. (Lyman) *Height 4⅛ inches*
 Collection of Rev. N. Mayhew, F.S.A.
 Collection of Thomas Sutton, Esq., Esthall, Eastbourne, Sussex, 1917
 [See illustration]
594. GOTHIC CARVED IVORY SHRINE *Franco-Flemish, XIV Century*
 The central portion contains the high relief standing figure of the Virgin holding the Child on her left arm, beneath a Gothic canopy, on slender colonnettes (one missing); together with two narrow wings carved with figures of the Holy Family and saints, in niches. On the back, remains of polychromy, with figures and an escutcheon. (Lyman) *Height 7¾ inches*
 Collection of Baron de St. Levée d'Augerre, Paris
 From Arnold Seligmann, Rey & Co., Inc., New York
 [See illustration]
595. GOTHIC FINELY CARVED IVORY PLAQUETTE *Ile de France, XIV Century*
 Carved in bold relief in a deeply sunk panel with a Crucifixion flanked by figures of Mary and a saint, beneath a traceried arch with weeping angelic figures in the spandrels and (very unusually) looking down from the soffit. Rich deep patina. (Lyman) *Height 5⅝ inches*
 Exhibited at the Museum of Fine Arts, Boston

[See illustration]



AT LEFT, TOP TO BOTTOM: NUMBERS 598-595-600
 CENTRE, TOP TO BOTTOM: NUMBERS 592-594-597-596
 AT RIGHT, TOP TO BOTTOM: NUMBERS 593-599-601

- 110-
596. ROMANESQUE CARVED IVORY CROZIER HEAD *Italian, Late XII Century*
 Tau formed of opposed undulating serpent bodies regardant; one face with
 deep brown patina. (Lyman) *Length 5¾ inches*
 Collection of Baron de St. Levée d'Augerre, Paris
 From Arnold Seligmann, Rey & Co., Inc., New York
 [See illustration]

- 520-
597. GOTHIC CARVED IVORY MIRROR CASE *French, circa 1300*
 Small roundel carved with animalistic motives at the corners and enclosing
 two charming *bas relief* figures of a maiden and a youth carrying a hawk.
 (Lyman) *Diameter 2¼ inches*
 From George Harding, London
 [See illustration]

- 220-
598. GOTHIC CARVED IVORY PLAQUETTE *English (?), XIV Century*
 Depicting the standing *bas relief* figure of S. Vincent holding a missal and
 aquamanile, between columns linked above by a banderole. (Lyman)
Height 5 inches
 From the Fitzhenry Collection
 Collection of Thomas Sutton, Esq., Esthall, Eastbourne, Sussex, 1917
 Exhibited at the Victoria and Albert Museum, London
 [See illustration]

- 225-
599. GOTHIC CARVED IVORY TRIPTYCH PLAQUETTE *French, Early XV Century*
 In the form of a triptych with five standing figures: the centre panel with
 the Virgin and Child flanked by SS. John the Baptist and Catherine, the
 wings with SS. Peter and Paul; standing on pedestals within niches crock-
 eted and beautifully pierced with tracery, the corners with quatrefoils depict-
 ing the Four Evangelists. (Lyman) *Height 5 inches*
 Collection of John Edward Taylor, Esq., London, 1912, no. 83
 Exhibited at the Museum of Fine Arts, Boston
 [See illustration]

Illustration of numbers 596 to 599, inclusive, appears on the preceding page.

600. GOTHIC FINELY CARVED IVORY GROUP *School of Rheims, XIII Century*
Haut relief seated figure of Christ crowning the Virgin, who is seated beside him. Beautiful patina. (Lyman) Height 3 inches

From Demotte, Paris

Exhibited at the Museum of Fine Arts, Boston

[See illustration]

601. GOTHIC CARVED IVORY BAS RELIEF *Ile de France, XIV Century*
 Fragment of a frieze depicting the Savior administering a wine cup to a Disciple, flanked by figures of the Apostles, the Magdalene prone and kissing his feet. (Lyman) Height 3¼ inches

From Arnold Seligmann, Rey & Co., Inc., New York

[See illustration]

602. RENAISSANCE CARVED IVORY POWDER HORN *Swiss, XVI Century*
 Curved fish-shaped horn carved in low relief with running hounds pursuing hares, a collar of bird figures, and at either end realistic animal masks; hinged brass mount. (Lyman) Length 9 inches

603. SILVER-MOUNTED IVORY BOX *Siculo-Arab, XIV Century*
 Cylindrical toilet box and cover mounted with slender silver hasps. (Lyman) Height 2¾ inches

From the Fitzhenry Collection

Exhibited at the Museum of Fine Arts, Boston

604. CARVED IVORY-HANDLED KNIFE AND FORK *French or Swiss, Early XVI Century*
 Knife and two-pronged fork, with handles carved with pyramids of putti holding bunches of fruit. (Lyman) Lengths 8 and 7¼ inches
 Collection of Thomas Sutton, Esq., Esthall, Eastbourne, Sussex, 1917

605. GOTHIC CARVED IVORY PLAQUETTE *French, XIV Century*
 Seated figure of the Virgin with the Child on her left knee, flanked by angelic figures with camels, beneath a double crocketed arch. (Lyman) Height 3¾ inches

606. GOTHIC CARVED IVORY TRIPTYCH WING *French, XIV Century*
 Tall narrow plaquette depicting three episodes from the life of the Savior. (Lyman) Height 8½ inches

Collection of Alfred Trapnell, Esq.

Illustration of numbers 600 and 601 appears facing page 128.

- 50- 607. GOTHIC CARVED IVORY PLAQUETTE *Franco-Flemish, XIV Century*
 Carved in *bas relief* with the Crucifixion with flanking figures of male and female mourners, beneath a crocketed arch surmounted by window tracery.
 (Lyman) *Height 4 inches*
 From Fenton & Sons, London
 Exhibited at the Museum of Fine Arts, Boston

- 40- 608. TWO SMALL GOTHIC CARVED IVORY PLAQUETTES *French, XIV Century*
 Quaint versions of the Nativity with the Virgin reclining, and shepherds, etc., in the background; the smaller one polychromed. [Lot.] (Lyman)
Heights 2½ and 3⅛ inches
 From Dikran Kelekian, New York

FRENCH FURNITURE AND DECORATIONS

- 160- 609. VIENNESE PAINTED ENAMEL AND SILVER EWER AND TRAY
 Exquisitely painted with mythological scenes, the underside of the tray gilded and painted with floral ornament. Small imperfections. In velvet-lined case. (Rogers) *Height of ewer 7 inches; diameter of tray 7¾ inches*

- 60- 610. CARVED IVORY AND REPOUSSÉ SILVER TANKARD *Renaissance Style*
 Ivory tusk body carved in relief with a boar hunt; mounted with silver foot, rim and cover, *repoussé* with fruit swags and strapwork and cartouches of hunting scenes; ivory finial figure and caryatid handle, repaired.
 (Kertscher) *Height 14 inches*

- 40- 611. ENGRAVED BONE CASKET *North Italian, XVII-XVIII Century*
 Sarcophagus type, with plaquettes engraved with floral ornament, separated by panels of *ajouré* guilloche work, the front and back with small *ajouré* panels of deer and hounds.
Length 9½ inches

- 130- 612. PAIR EMPIRE BRONZE DORÉ AND CUT GLASS THREE-TIER
 SWEETMEAT DISHES BY THOMIRE *French, circa 1810*
 Three graduated *diamanté* and fan-cut glass round dishes, supported on a central *bronze doré* column, the incurvate trilateral base sustaining three dolphins.
Height 19 inches

613. PAIR MEISSEN PORCELAIN BASKETS OF FLOWERS

Round basket with *ajouré* flutings and modeled with festooned rams' heads and medallions; containing a bouquet of colorful porcelain flowers with gilded bronze leaves. Marcolini porcelain, redecorated. (N. Y. Private Collector)

Total height about 24 inches

[See illustration on page 25]

614. GOTHIC CARVED AND POLYCHROMED GROUP

Westphalian, Late XV Century

Depicting the birth of the Virgin, with S. Anne reclining on a couch holding the swaddled baby, the bearded S. Joachim standing beside her reading from a missal.

Height 14¾ inches

615. LATE GOTHIC CARVED OAK STATUETTE OF THE VIRGIN

French, Early XVI Century

Seated figure wearing voluminous cloak, a crown surmounting her long hair, the hands briefly extended.

Height 34 inches

616. BRONZE SIX-LIGHT CHANDELIER

Flemish, dated 1690

Globe supporting six scrolled arms for lights, and central standard with double-eagle finial. With engraved presentation inscription in German, dated MDCXC, and monogrammed cartouche detailing a restoration in 1796. (N. Y. Private Collector)

Diameter 24 inches

617. LOUIS XIV CARVED AND GILDED TABOURET IN SEVENTEENTH CENTURY JARDINIÈRE VELVET

Oblong top covered in Genoese jardinière velvet woven in green, wine red, aubergine, gray and *bois de rose*; frame of later date with carved square tapering legs and H-stretcher. (N. Y. Private Collector)

618. DIRECTOIRE INLAID SATINWOOD TRIPOD JARDINIÈRE

Of tripod form, with loose copper liner and metal ornaments. (Alexander)

Height 28½ inches; diameter 13½ inches

619. BRASS AND STEEL SCALES

French, XVIII Century

Brass column with steelyard supporting two pans; on Belgian gray marble base. Together with a steel fire screen. [Lot.]

Height 53½ inches



[NUMBER 620]

620. PAIR LOUIS XV DECORATED RED LACQUER CORNER ÉTAGÈRES

Pierre Cleret (M.E. 1738); French, XVIII Century

180-
Quarter-round with shaped sides and serpentine front, containing two shelves and double cupboard in base; charmingly painted with Chinese figures and flowering plants in colors on a vermillion ground. One stamped underneath: P. CLERET, M.E. A very handsome pair.

Height 31 inches; width 15½ inches

Note: Pierre Cleret passed *maître menuisier* in Paris about 1738 and worked in the rue Saint-Nicolas until the end of the reign of Louis XV. See Salverte, *ed.* 1923, p. 57.

Collection of the Comte de Vaudreuil, Paris

[See illustration]

621. CARVED AND PANELED WALNUT ARMORIAL SETTLE *Italian Baroque*
 Three-panel back, embellished with a carved coat of arms; seat furnished with a blue velvet cushion. (N. Y. Private Collector)

Length 5 feet 7 inches

622. LOUIS XV INLAID ACAJOU AND BOIS DE VIOLETTE OCCASIONAL TABLE
François Lesueur (M.E. 1757); French, XVIII Century
 Oblong rimmed top with checkerboard *marqueterie*, three small drawers; on slender square cabriole legs with undershelf. Stamped in second drawer: F. LESUEUR. Height 28 inches; width 16 inches

Note: François Lesueur lived in the rue de Lappe when he passed master in September, 1757; he died about 1765. See Salvete, *ed.* 1935.

623. DIRECTOIRE INLAID WALNUT POUFREUSE *French, Late XVIII Century*
 Oblong top with three hinged flaps opening to disclose cretonne-lined compartments and a toilet mirror; two small drawers in front, plain square tapering legs. Height 28½ inches; length 30 inches

624. PAIR LOUIS XIV CARVED AND GILDED ARMCHAIRS IN SEVENTEENTH CENTURY BRUSSELS TAPESTRY
 High back and seat in silk-woven tapestry designed with clusters of flowers and foliage in reds, blues, yellows, and tans. Elaborately carved frame of later date. (Alexander)

625. LOUIS XVI ACAJOU BOUILLOTTE TABLE
 Shaped circular top of figured marble, rimmed in brass, two drawers and two candle slides around the frieze, fluted round tapered legs with undershelf. (Sheridan) Height 28¼ inches; width 36 inches

626. LOUIS XV INLAID AMARANTH AND TULIPWOOD WALL CABINET
Pierre Garnier (M.E. 1742); French, XVIII Century
 With straight top and serpentine arched sides, paneled with quartered tulipwood; fitted with oak shelves. Stamped underneath: GARNIER M.E. (N. Y. Private Collector) Height 26½ inches; length 29 inches

Note: Pierre Garnier passed master in December, 1742; he established himself in the rue Neuve-des-Petits-Champs and became one of the first *ébénistes* of his time; he is represented by works in the Louvre, the South Kensington Museum, and the Musée Jacquemart-André. See Salvete, *ed.* 1923, p. 125.



[NUMBER 627]

627. PAIR LOUIS XV CARVED WALNUT AND AUBUSSON TAPESTRY

FAUTEUILS

French, XVIII Century

370- Cartouche-shaped molded back with shell cresting, curved and molded open arms with armpads, shell-carved front rails and cabriole legs. Covered in fine Aubusson tapestry of the period woven with nosegays of flowers with bird figures, in the manner of Monnoyer, within leaf-scrolled cartouches bordered with peacock blue.

[See illustration]

30 628. LOUIS XVI CARVED AND GILDED BANQUETTE IN STRIPED SATIN

French, XVIII Century

Provincial piece, with six square tapered legs, the frame carved with swags; top re-covered in beige and rose striped satin. (*Sheridan*)

Height 18 inches; length 46½ inches



[NUMBER 629]

629. PAIR LOUIS XVI CARVED WALNUT AND STRIPED SILK
BOURETTE FAUTEUILS

J. B. Boulard (M.E. 1754); French, XVIII Century

Molded fan-shaped back, fluted horseshoe arms with armpads, round fluted and tapering legs. Covered in handsome sky blue and white striped silk bourette. Stamped under rear seat rail: J. B. BOULARD.

Note: Jean Baptiste Boulard (1725-1789) was received master in April, 1754, and worked in the rue de Cléry, executing numerous pieces for the royal *châteaux*, including the famous state bed of Louis XVI at Fontainebleau. Numerous examples by him are in the Mobilier National. See Salvete, *ed.* 1923, p. 30.

Collection of Jean Rapp, Paris

[See illustration]



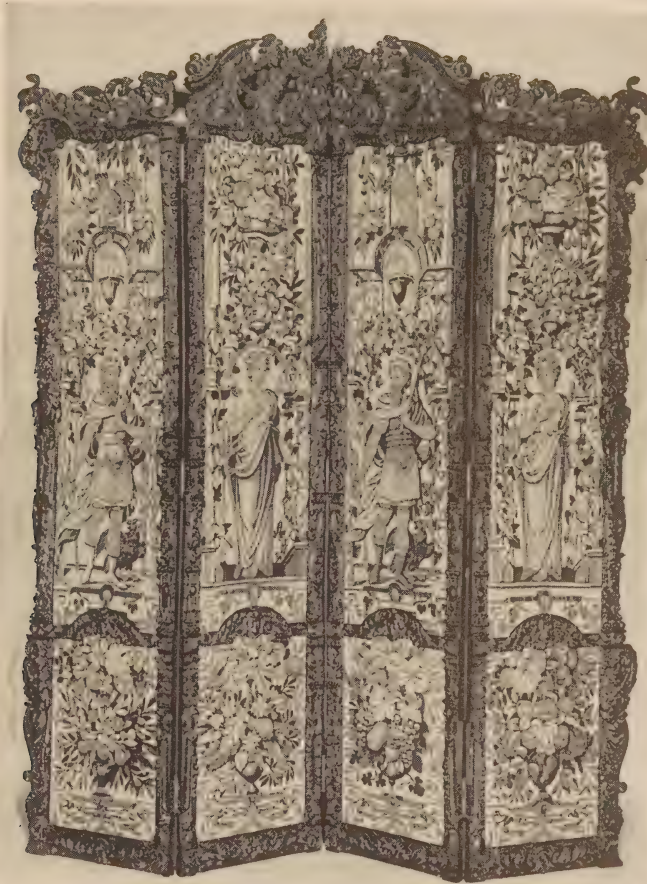
[NUMBER 630]

REGENCY MAHOGANY MUSICAL BRACKET CLOCK : NUMBER 522

- 720- 630. DIRECTOIRE CERISIER COMMODE *French, Late XVIII Century*
Oblong top with chamfered front corners above fluted pilasters, three triply paneled long drawers with angular bail handles; short cup-turned legs. Light ruddy patina. (*Thieriot*) Height $34\frac{1}{2}$ inches; length $49\frac{1}{2}$ inches

[See illustration]

- 85- 631. LOUIS XVI CARVED WALNUT AND BLUE SILK DAMASK FAUTEUIL *French, XVIII Century*
Oval molded back, open curved and fluted arms with armpads, round fluted and tapering legs; back, seat, and armpads in light blue silk damask.



[NUMBER 632]

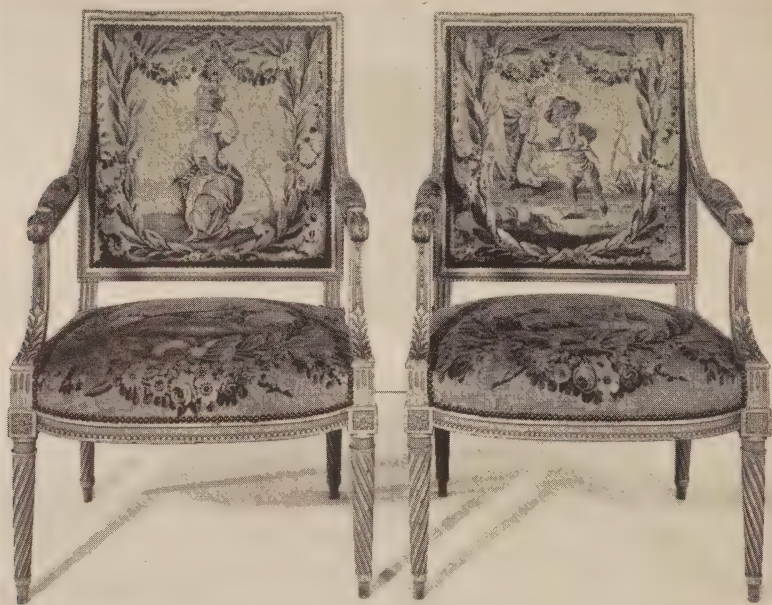
632. BRUSSELS RENAISSANCE TAPESTRY FOUR-FOLD SCREEN

Late XVI Century

Composed of four tall panels framing tapestry borders woven with a rich design of allegorical male and female figures, urns of flowers, birds, fruits and other motives of the High Renaissance. Walnut frame of later date elaborately pierced and carved in similar style. (*Alexander*)

Height 9 feet 4 inches; width 5 feet 2 inches

[See illustration]



[NUMBER 633]

- 280- 633. PAIR LOUIS XVI CARVED AND LAQUÉ FAUTEUILS IN
 AUBUSSON TAPESTRY *French, XVIII Century*
 Square beaded frame having open arms with armpads and incurvate beaded
 and acanthus-carved frontal supports; beaded rails with rosetted dies, round
 spirally fluted and tapering legs; *laqué* gray. Covered in delightful Aubus-
 son tapestry of the period, the backs woven with single figures of the
Enfants Jardiniers, after Huet, the seats with animal groups, after J. B.
 Oudry, both within garlands of green bay leaves hung with bowknotted
 festoons of flowers. (*N. Y. Private Collector*)

[See illustration]

- 280- 634. PAIR LOUIS XVI CARVED AND LAQUÉ FAUTEUILS IN
 AUBUSSON TAPESTRY *French, XVIII Century*
En suite with the preceding. (*N. Y. Private Collector*)
635. PAIR LOUIS XVI CARVED AND LAQUÉ FAUTEUILS IN
 AUBUSSON TAPESTRY *French, XVIII Century*
En suite with the preceding. (*N. Y. Private Collector*)



[NUMBER 636]

- 190- 636. LOUIS XVI CARVED AND LAQUÉ MARQUISE IN
 AUBUSSON TAPESTRY *French, XVIII Century*
En suite with the preceding. (N. Y. Private Collector)
Length 37½ inches
 [See illustration]

- 5- 637. DIRECTOIRE WALNUT MARQUETERIE COMMODE *Italian, circa 1800*
 The top, front, and ends show panels of strikingly marked walnut veneered
 in a herringbone design, also medallions of trophies in light wood *marque-*
terie bordered and banded with fruitwood. Bow-shaped front contains
 three long drawers; square tapered legs. (*Sheridan*)
Height 35 inches; length 49 inches

- 0- 638. RÉGENCE FINELY CARVED WALNUT BANQUETTE, IN SIXTEENTH
 CENTURY BRUSSELS TAPESTRY
 Oblong slip seat in Renaissance tapestry woven in colors with the seated
 figure of Lucretia between urns of flowers; cabriole-leg frame richly carved
 with rococo ornament. *Length 38½ inches*

639. DIRECTOIRE FRUITWOOD OCCASIONAL TABLE

French, Late XVIII Century

Oblong bronze-rimmed top in gray S. Anne marble, repaired; small end drawer, plain frieze, on round tapering legs.

Height 28 inches; length 29½ inches

640. DIRECTOIRE ACAJOU CARD TABLE

French, Late XVIII Century

Oblong hinged top lined with green baize; plain frieze on square tapering legs, the rear legs pulling out to form a support.

Height 30 inches; length 33 inches

641. LOUIS XV LADY'S TULIPWOOD MARQUETERIE BUREAU À DOS D'ANE MOUNTED IN BRONZE DORÉ

Small slant-front writing desk decorated with foliage *marqueterie* in rosewood in a ground of matched tulipwood veneer; embellished with gilded bronze rocaille mounts. Interior fitted with pigeonholes and small drawers. (Sheridan)

Height 32 inches; width 18½ inches

642. DIRECTOIRE ACAJOU BONHEUR DU JOUR *French, Late XVIII Century*

Upper section with galleried white marble top, double cupboard with mirror panels surmounting two small drawers; lower section with folding tablet, two long drawers, and square tapering legs. The drawer fronts paneled with brass.

Height 48½ inches; width 30 inches

643. DIRECTOIRE INLAID WALNUT POUFREUSE D'HOMME

French, Late XVIII Century

Quartered hinged oblong top in finely figured walnut, opening to interior fitted with toilet mirror and compartments lined with green silk, a fitted long drawer below; plain square tapering legs.

Height 32 inches; length 32½ inches

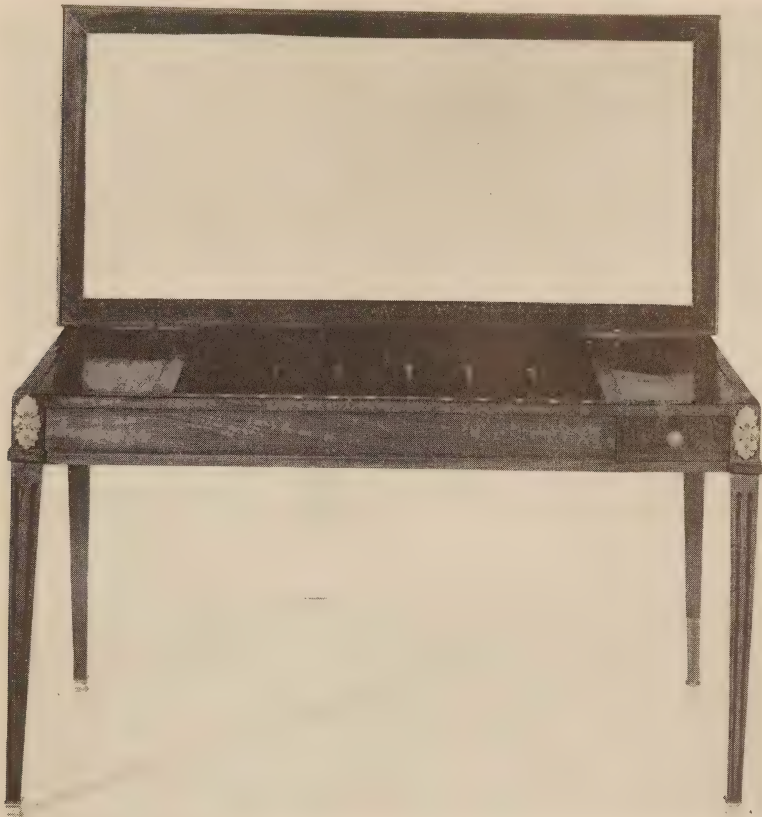
644. LOUIS XVI ACAJOU AND INLAID EBONY TRICTRAC TABLE

Caspar Schneider (M.E. 1786); French, XVIII Century

Detachable oblong top repaneled with gold-tooled ivory leather, the underside with baize; opening to table with well in ebony inlaid for backgammon, containing two small drawers; square fluted and tapering legs. Stamped under rail: CASPER SCHNEIDER, M.E. With counters, and a pair of silver-plated candle holders.

Height 27½ inches; length 45 inches

Note: Caspar Schneider, a native of Germany, worked in the Faubourg Saint-Antoine during the reign of Louis XVI and passed master in



[NUMBER 644]

March, 1786. He furnished many *meubles* for the Crown and particularly for the Queen. His business was ruined by the Revolution. See Salvete, *ed.* 1923, p. 292.

Collection Le Perrier, Paris

Collection of Henri Kaner, Paris

[See illustration]

645. LOUIS XV CARVED WALNUT COMMUNE *Provençal, XVIII Century*

185- Rounded oblong top, three drawers gouged with cartouche ornament centring medallions, and furnished with rococo brass handles and escutcheons; valanced skirt, cabriole legs. Skirt restored.

Height 33 inches; length 37½ inches

75- 646. LOUIS XVI CARVED WALNUT AND BLUE VELVET LYRE-BACK
CHAUFFEUSE *Attributed to Jacob Frères; French, XVIII Century*
Low chair with lapis blue velvet seat and round fluted tapering legs; the
open back with fluted uprights enclosing a lyre splat.
Collection of Me. René Camuzat, Paris

130- 647. CHARLES X CARVED AND GILDED LOVE SEAT IN AUBUSSON TAPESTRY
French, circa 1820-30
The upholstered back and seat in silk-woven tapestry designed with a
pastoral subject after Boucher, the seat with a group of animals, framed
in garlands of flowers and leaf scrolls. Frame elaborately carved with
figures of amors, flower swags, etc. (*Alexander*) *Length 4 feet*

90- 648. DIRECTOIRE INLAID ACAJOU AND KINGWOOD COMMODE
Oblong top of *rouge royale* marble, three long drawers between three-
quarter round pilasters, tapering round legs. Veneered with panels of
acajou, the frieze inlaid with prism flutings. (*Thieriot*)
Height 32 inches; length 34 inches

20- 649. LOUIS XVI CARVED AND GILDED FIRE SCREEN IN AUBUSSON TAPESTRY
French, XIX Century
Small rectangular screen mounting a panel of silk-woven tapestry designed
with a figure of a gardener. (*Alexander*)
Height 35¼ inches; width 16½ inches

80- 650. LOUIS XV CARVED, LAQUÉ AND PARCEL-GILDED CANAPÉ IN
BLUE SILK BROCADE *French, XIX Century*
Arched horseshoe back, cabriole legs carved with leaf sprays at the knees;
the molded frame finished turquoise and gold. Covered in blue silk brocaded
with ribbon stripes and bowknotted vines. *Length 55 inches*

125- 651. DIRECTOIRE WALNUT MARQUETERIE COMMODE *Italian, circa 1800*
Rectangular case of three long drawers; decorated on the top, front, and
ends with mythological figure subjects and other ornament in medallions
and oblong panels, inlaid in light and dark wood *marqueterie* in a ground
of matched walnut bordered with dark rosewood. (*Sheridan*)
Height 35½ inches; length 48 inches

[See illustration]

80- 652. PAIR LOUIS XVI CARVED AND GILDED WALL MIRRORS
Italian, XVIII Century
Narrow upright rectangular frame ornamented on the pediment and base
with carved clusters of ostrich feathers, chimerae, urns and laurel swags.
Retains old glass, showing some cracks. Metal socket at the base originally
held a candle sconce. (*Sheridan*) *Height 59 inches; width 19¼ inches*

[See illustration of one]



[NUMBERS 651 AND 652]

DELFT DECORATED FAÏENCE GARNITURE: NUMBER 14

653. PAIR KINGWOOD PARQUETERIE ENCOIGNURES *Louis XV Style*
 Shaped front enclosed by a door inlaid in a *parqueterie* design; Skyros
 marble top, gilded bronze mounts. (*Alexander*)
Height 34 inches; width 21 inches

654. ACAJOU THREE-TIER DUMBWAITER *French, circa 1800*
 Composed of three graduated twelve-sided shelves supported on an hexa-
 gonal central column and flaring tripod.
Height 44½ inches; diameter 24 inches

655. TWO LOUIS XV SILK NEEDLEPOINT STOOLS
 Various covered in silk needlepoint; leaf-carved frame and fluted tapering
 legs, one *laqué* cream.

ORIENTAL AND AUBUSSON RUGS

656. CHINESE GOLDFISH RUG *Ch'ien-lung*
 Unusual design of seven goldfish swimming in an ivory pool with waves at
 the corners; trellised fawn border. (*N. Y. Private Collector*)
Length 4 feet 2 inches; width 2 feet 4 inches

657. TWO TEKKE BOKHARA RUGS
 Each woven with three chains of particolored octagon motives in a tawny
 red field, separated by cruciform ornaments and latchhooked lozenge mo-
 tives, respectively. One repaired.
Length 4 feet 9 inches; width 2 feet 10 inches
Length 4 feet 5 inches; width 3 feet 2 inches

658. HEREKE PRAYER RUG
 Apple green mihrab with two colonnettes beneath an arch with celadon
 spandrels patterned with seaweed motives; saffron border woven with
 Ghiordes palmettes and enclosed by curving leaves.
Length 4 feet 8 inches; width 4 feet 1 inch

659. KULAH PRAYER RUG *XVIII Century*
 Blood red mihrab with a central hanging floral pendant, the sky blue span-
 drels and columns diapered with blossoms; mazarine blue floral border.
 Some repairs.
Length 6 feet 2 inches; width 4 feet 2 inches

660. LAVEHR KIRMAN RUG
 Woven with concentric floral medallions amid masses of curving jasmine
 branches in deep blue, rose, and buff, three floral borders in colors of the
 field.
Length 6 feet 3 inches; width 4 feet 2 inches



[NUMBER 661]

661. KIRMAN 'TREE OF LIFE' RUG WITH PORTRAIT OF SHAH ABBAS

Midnight blue field almost entirely concealed by the slender curving twin trunks of two Trees of Life loaded with variegated blossoms, with figures of perched birds, enclosing an apple green oval medallion with a bust portrait of the Shah; bone white *millefleurs* border and tan guards.

Length 8 feet 9 inches; width 4 feet 9 inches

[See illustration]

- 56- 662. CHINESE RUG Yung Chêng
 Field of burnt orange, woven in blue, white, old gold, and tan with peony sprigs centring a medallion; deep blue main border of peony vines. (N. Y. Private Collector) Length 7 feet 10 inches; width 5 feet 3 inches
- 105- 663. ANATOLIAN SILK RUG
 Cartouche-shaped field of rose-scarlet with an oyster white quatrefoil medallion and scalloped powder blue spandrels, all patterned with curving stems of Herati leaves and lotus palmettes; oyster white lotus border. Length 9 feet 9 inches; width 7 feet
- 100- 664. CHARLES X AUBUSSON CARPET Circa 1830
 Mulberry field diapered with rosettes, with four nosegays of flowers at the corners, and overlaid by a circular floral medallion with gray ground; gray border with a stiff frame of rose and blue asters. Length 10 feet 2 inches; width 8 feet 1 inch
- 120- 665. SOUJ-BOULAK CARPET
 Midnight blue field with an allover longitudinal pattern of bent angular stems of carnations in variegated colors, amid stiff stems of foliage; three narrow borders. Length 14 feet 6 inches; width 7 feet
- 195- 666. AUBUSSON CARPET Circa 1850
 Woven with an oval oyster white medallion centring a pastel-colored bouquet of flowers in a celadon field, the spandrels ornamented with interlaced strap scrollings and clusters of pink and white roses; magenta husk border with cartouches at the corners. Length 12 feet; width 8 feet 8 inches
- 130- 667. SAROUK CARPET
 Developing a pendent midnight blue and oyster white arabesque medallion, in a cartouche-shaped *sang de boeuf* field overrun with creepers, with red and écru spandrels; midnight blue border of garlanded lotus palmettes. Ends refringed. Length 13 feet 6 inches; width 8 feet 4 inches
- 240- 668. AUBUSSON CARPET Circa 1845
 Rose-beige field centred with a garlanded gray cartouche containing a bouquet of flowers, the whole surrounded by a scrolled celadon and gray frame hung with floral festoons, with cartouches at the corners and the centres of the longer sides. Some repairs, as usual. Length 13 feet 10 inches; width 11 feet 5 inches

[See illustration]



[NUMBER 668]

669. FEREGHAN CARPET

120- Patterned with the allover Herati trellis design, principally in rose, sky blue, yellow and tan, in a deep blue ground; pistache green border with 'turtle' motives upon interlaced scarlet branches. (N. Y. Private Collector)

Length 16 feet 7 inches; width 7 feet

670. KIRMAN MEDALLION CARPET

160- Woven with a large valanced and pendent rose red medallion in a cartouche-shaped field of plain yellow camel's hair, with shaped rose spandrels woven with floral arabesques to match the medallion; five midnight blue, rose, and ivory floral borders.

Length 12 feet 10 inches; width 9 feet 5 inches

671. PERSIAN GOLD-WOVEN SILK RUG

670- Beautiful powder blue field woven with a trellis of slender fawn branches bearing a profuse variety of *millefleurs* and interspersed with symmetrical Ispahan palmettes and pairs of floral vases partly voided in gold; rose crimson border of lotus palmettes and fimbriated leaves, between powder blue and ivory vine guards. (N. Y. Private Collector)

Length 9 feet; width 6 feet

[See illustration]

672. CHINESE CARPET

150- Plain lavender field and beige border woven with a few scattered vases of flowers and vignettes of pagodas, flowering trees and birds.

Length 17 feet 7 inches; width 11 feet 3 inches

673. HERIZ CARPET

out Field of old rose occupied by an allover repeated design of floral palmettes, spatulate leaves, and flowering and leafy vines in multiple light and dark colors. The main border occupied by a series of similar bold floral motives in a ground of midnight blue with fleuretted guards. Small repairs. (N. Y. Private Collector)

Length 26 feet 3 inches; width 18 feet

674. INDIAN CARPET

125- Field of cherry red with an allover Ispahan design of pairs of lotus palmettes supported by cloud-bands arranged symmetrically upon interlacing creepers and woven principally in saffron, light green, and blue; broad sage green lotus border.

Length 16 feet 8 inches; width 15 feet



[NUMBER 671]

675. FEREGHAN CARPET

80-

Woven with the characteristic Herati lozenge trellis pattern in blue, green, scarlet, old gold, and white, on a midnight blue field showing some wear; scarlet 'turtle' border. *Length 17 feet; width 11 feet 10 inches*

676. KIRMAN RUNNER

75-

Field of sapphire blue woven principally in rose and fawn with an Ispahan design of interconnected lotus palmettes and cloud-bands, within a lotus border. Has been reduced. *Length 21 feet 6 inches; width 3 feet 4 inches*

677. KOUBA RUG

Circa 1700

130-

Woven with a trellis of lotus and peony rosettes in subdued colors in a mazarine blue ground with old gold floral border. Repaired. *Length 12 feet 3 inches; width 5 feet 10 inches*

678. KARABAGH RUG

30-

Cerise field with allover pattern of stepped *tête de nègre* floral medallions outlined in turquoise; narrow *tête de nègre* floral border. *Length 8 feet 4 inches; width 3 feet 6 inches*

{END OF SALE}

1	Session	\$	13.695-
2	"	"	15.241 ⁵⁰
3	"	"	25-355-
Grand Total			\$ 54.291 ⁵⁰

PARKE-BERNET GALLERIES • INC

*designs its catalogues and directs
all details of illustration, text
and typography*